

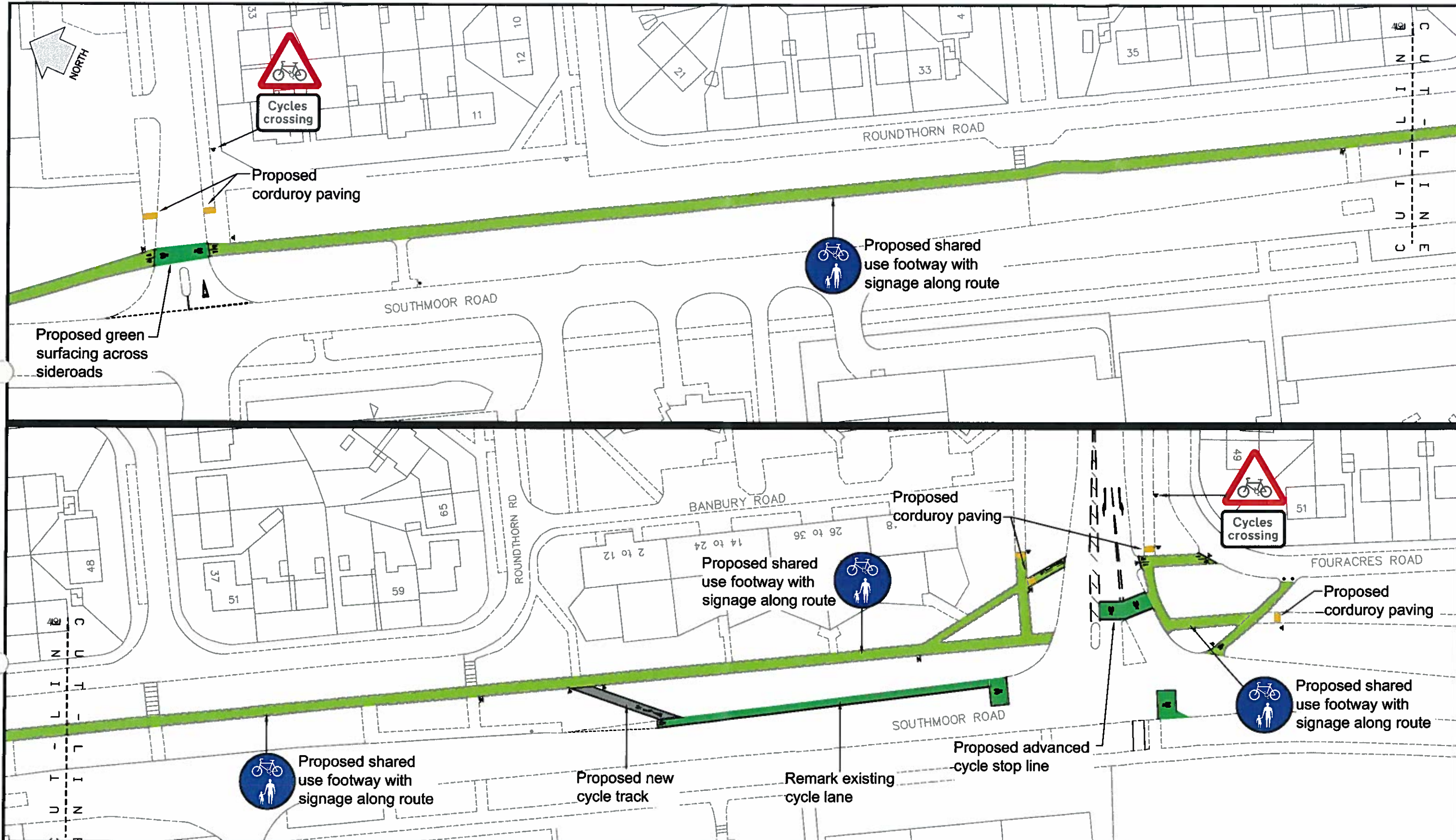
"Reproduced from the Ordnance Survey mapping with the permission of the Controller of Her Majesty's Stationary Office © Crown Copyright. Unauthorised reproduction infringes Crown Copyright and may lead to prosecution or civil proceedings".  
Manchester City Council Licence No. 100019568

"No part of this drawing or data file may be reproduced without prior written permission of the Head of Engineering Services or approved representative".



**Chris Barber** C.Eng., MICE Head of Engineering Services  
tel: 0161 455 2001 web: [www.manchester.gov.uk/medc](http://www.manchester.gov.uk/medc)  
fax: 0161 455 2049 email: [MEDC@manchester.gov.uk](mailto:MEDC@manchester.gov.uk)

PROJECT TITLE		WARD(S)		DRAWN BY	CHECKED	APPROVED
Sotuhmoor Road		Baguley		ST		
DRAWING TITLE		STATUS		DATE	DATE	DATE
Proposed Off Road Cycle Track		Preliminary Design		23/09/09		
Sheet 1 of 2		SHEET SIZE	SCALE	DRAWING NO.		
		A3	NTS	204108-0000-0002		
REVISION						



"Reproduced from the Ordnance Survey mapping with the permission of the Controller of Her Majesty's Stationary Office © Crown Copyright. Unauthorised reproduction infringes Crown Copyright and may lead to prosecution or civil proceedings".  
Manchester City Council Licence No. 100019568

"No part of this drawing or data file may be reproduced without prior written permission of the Head of Engineering Services or approved representative".



**Chris Barber** C.Eng., MICE Head of Engineering Services  
tel: 0161 455 2001 web: [www.manchester.gov.uk/medc](http://www.manchester.gov.uk/medc)  
fax: 0161 455 2049 email: [MEDC@manchester.gov.uk](mailto:MEDC@manchester.gov.uk)

PROJECT TITLE		WARD(S)	DRAWN BY	CHECKED	APPROVED
Sotuhmoor Road		Baguley	ST		
DRAWING TITLE		STATUS	DATE	DATE	DATE
Proposed Off Road Cycle Track		Preliminary Design	23/09/09		
Sheet 2 of 2		SHEET SIZE	SCALE	DRAWING NO.	
		A3	NTS	204108-0000-0003	
REVISION					