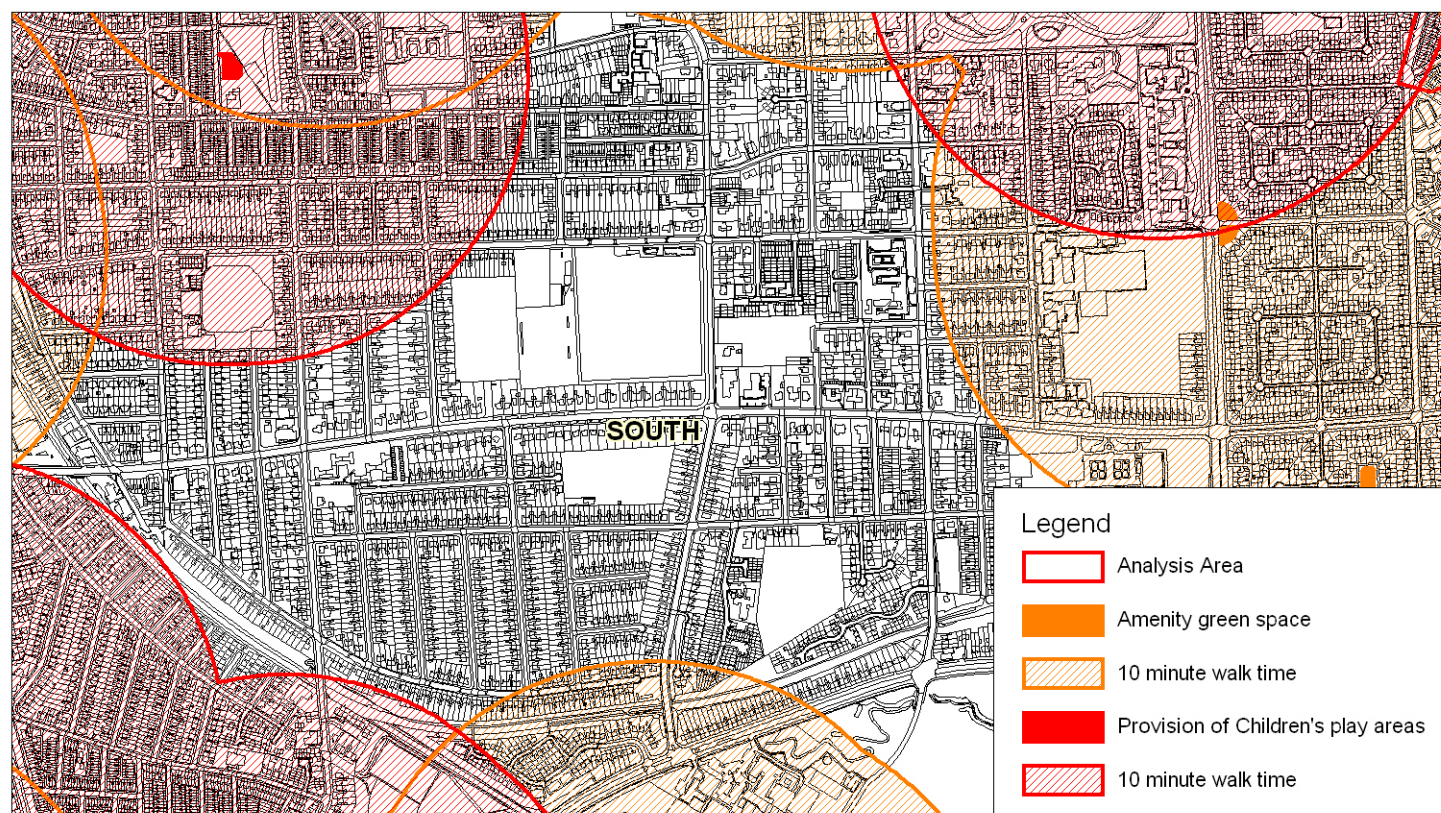


Figure 7.9 – Deficiencies of children’s play areas and amenity green space in the north west of South Manchester



This map is reproduced from Ordnance Survey material with the permission of Ordnance Survey on behalf of the Controller of Her Majesty's Stationery Office © Crown copyright. Unauthorised reproduction infringes Crown copyright and may lead to prosecution or civil proceedings. (100019568) (2008).



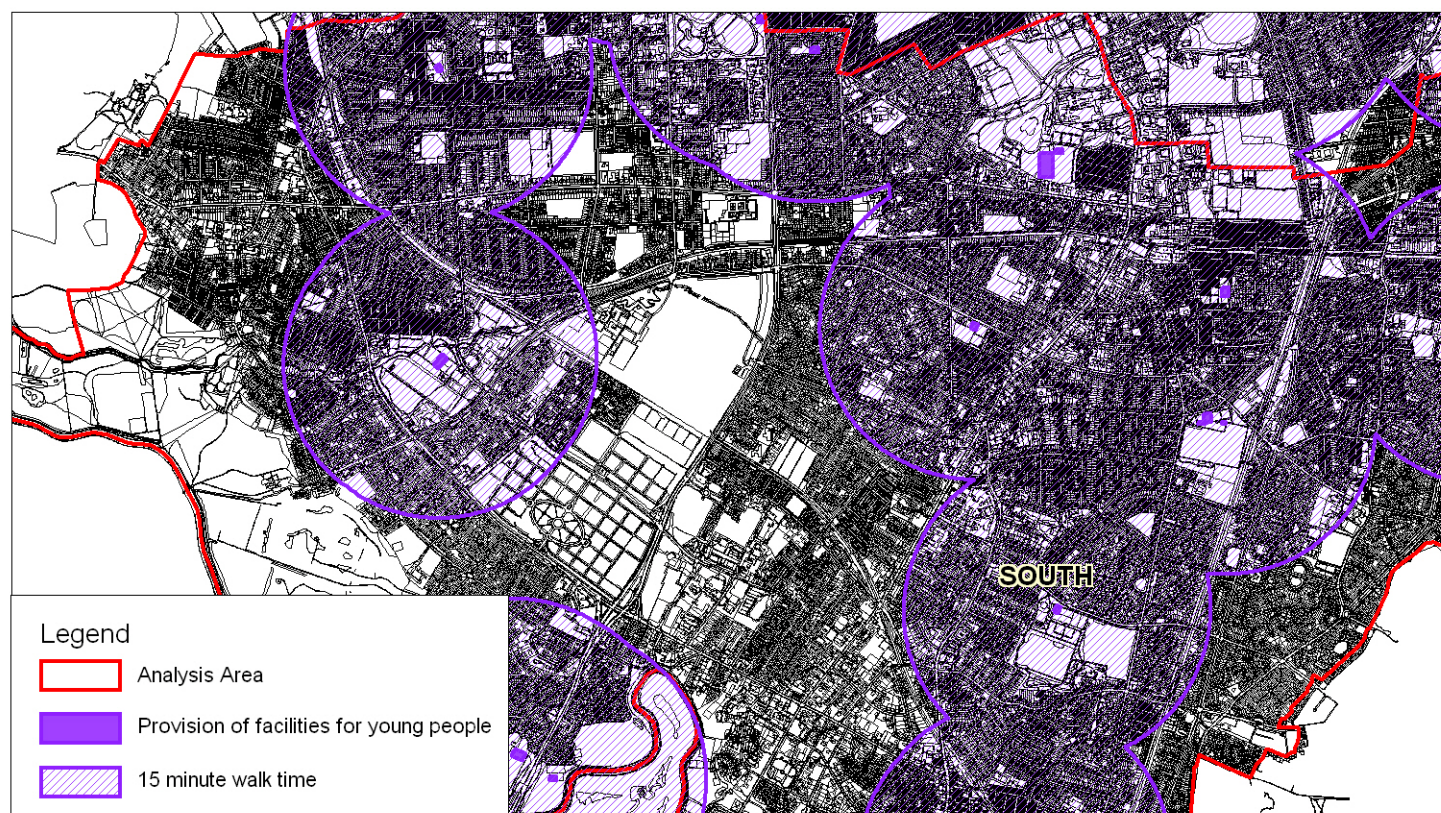
- 7.101 In addition to a lack of amenity green space or children's play area in the Whalley Range area, there are also no parks. This means that there is a lack of informal opportunities for play in this area.
- 7.102 The quality of existing play areas is average, with the average quality score of a site being 77%. Quality scores range from 60% - 100% and only one site achieved a quality score which falls within the top quartile level. This highlights the need to enhance the quality of play areas to ensure high quality provision in South Manchester.
- 7.103 Given the number of residents who are outside of the appropriate catchment of a play area, new provision should be prioritised in the south.

Short Term - facilities for children	Provide new facilities for children across South Manchester to address existing deficiencies, particularly in Whalley Range. New development will further exacerbate demand for facilities and the need for new provision should be evaluated on a case by case basis.
Ongoing – facilities for children	Drive a programme of qualitative improvements across existing facilities ensuring that facilities meet the needs of communities that they serve and provide a challenging play environment.

Facilities for young people

- 7.104 Consistent with the findings for children's play areas, the greatest quantitative shortfall of facilities for young people is found in South Manchester (2.32 hectares). This equates to approximately 21 facilities (based on the average size of a site).
- 7.105 Accessibility mapping illustrates this shortfall, with a large number of residents in the centre of the analysis area outside the catchment of a facility for young people, particularly in Chorlton Park and West Didsbury (Figure 7.10).

Figure 7.10 – Deficiencies of facilities for young people in South Manchester



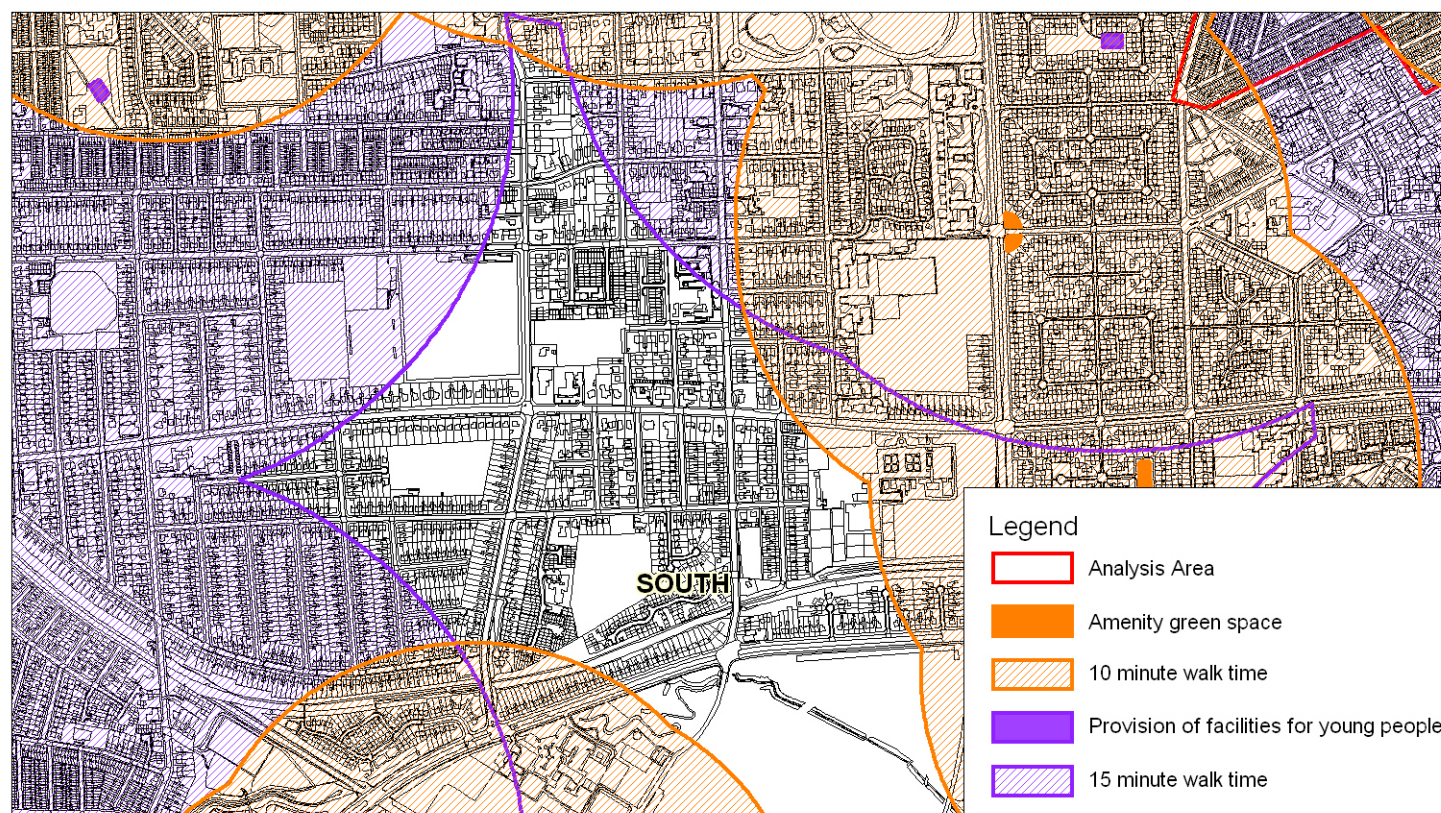
This map is reproduced from Ordnance Survey material with the permission of Ordnance Survey on behalf of the Controller of Her Majesty's Stationery Office © Crown copyright. Unauthorised reproduction infringes Crown copyright and may lead to prosecution or civil proceedings. (100019568) (2008).

NORTH

strategy financial delivery

7.106 Even when considering provision for young people in the context of amenity green space areas of deficiency are still evident. (Figures 7.11 and 7.12).

Figure 7.11 – Deficiencies of facilities for young people and amenity green space in the centre of South Manchester

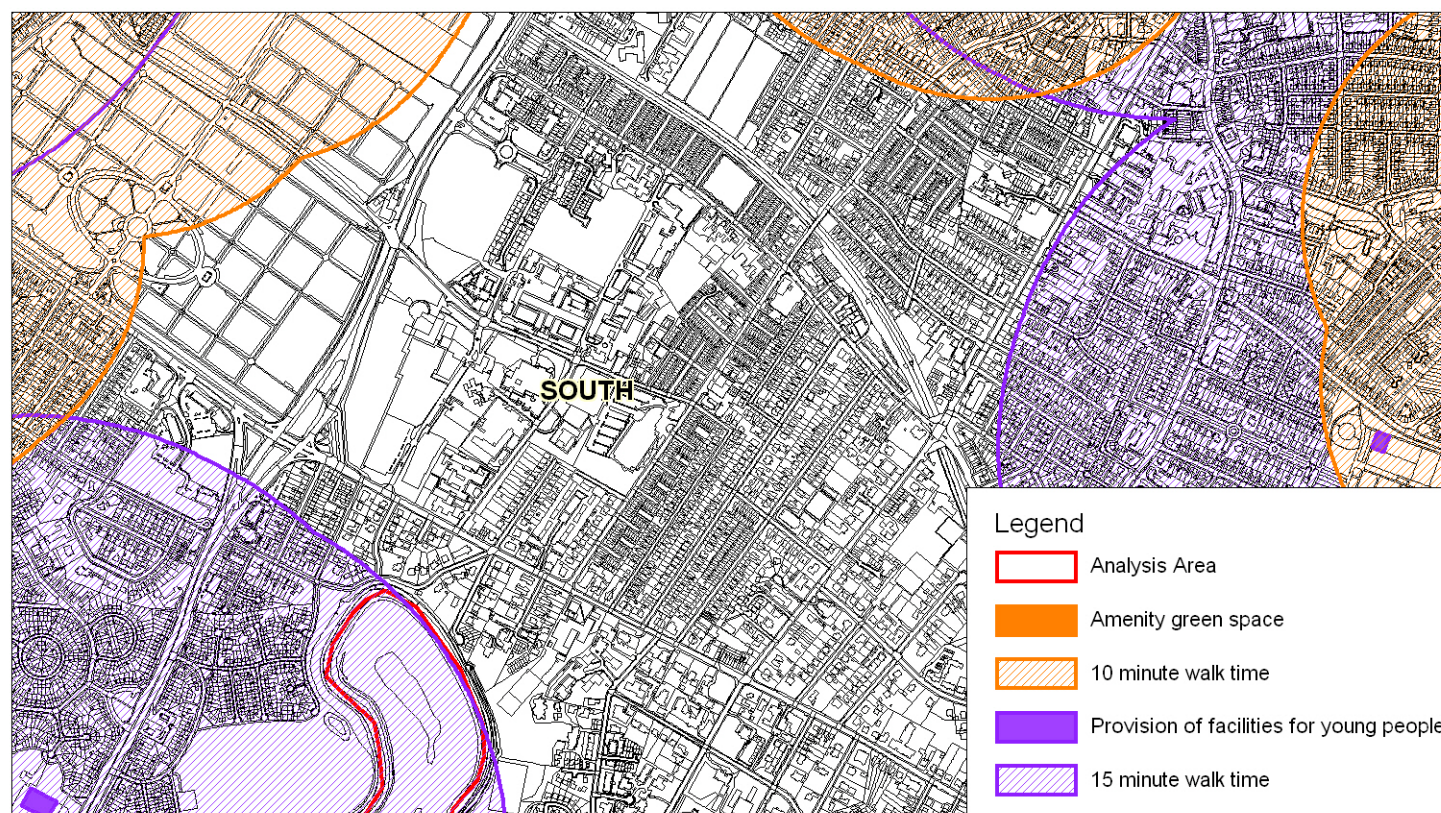


This map is reproduced from Ordnance Survey material with the permission of Ordnance Survey on behalf of the Controller of Her Majesty's Stationery Office © Crown copyright. Unauthorised reproduction infringes Crown copyright and may lead to prosecution or civil proceedings. (100019568) (2008).

NORTH

pmp
strategy financial delivery

Figure 7.12 – Deficiencies of facilities for young people and amenity green space in the north west of South Manchester



This map is reproduced from Ordnance Survey material with the permission of Ordnance Survey on behalf of the Controller of Her Majesty's Stationery Office © Crown copyright. Unauthorised reproduction infringes Crown copyright and may lead to prosecution or civil proceedings. (100019568) (2008).

NORTH

strategy financial delivery

- 7.107 The quality of facilities for young people in South Manchester is the highest of all areas in the City. The average quality score of a site is 76% and six sites achieved a quality score which falls in the top quartile (80% and above). However, despite the general good quality of facilities, six sites achieved quality scores below the top quartile level, indicating that there is a need for qualitative enhancements if a network of high quality facilities for young people is to be provided in South Manchester.

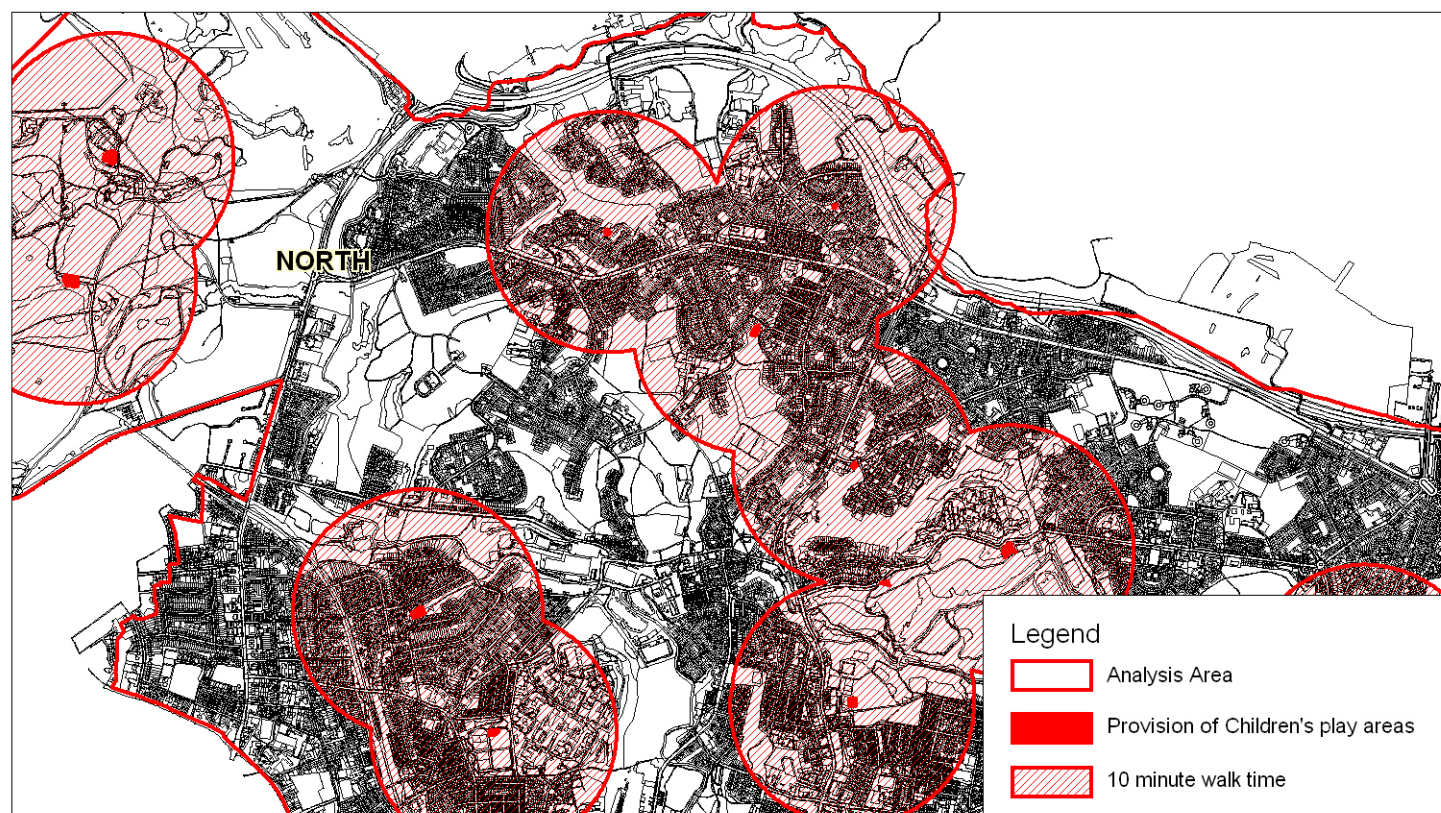
Short Term – facilities for young people	Provide new facilities for young people across South Manchester to address existing deficiencies, particularly in West Didsbury and Chorlton Park. New development will further exacerbate demand for facilities and the need for new provision should be evaluated on a case by case basis.
Ongoing – facilities for young people	Drive a programme of qualitative improvements across existing facilities ensuring that facilities meet the needs of communities that they serve and provide a challenging play environment

North Manchester

Children's play areas

- 7.108 Application of the quantity standard reveals that there is insufficient provision of children's play areas to meet demand. The current shortfall equates to 0.74 hectares, which is approximately seven play areas.
- 7.109 Accessibility mapping confirms the quantitative shortfall, with several areas outside of the catchment areas for facilities, in particular Harpurhey and Cheetham (Figure 7.13 and 7.14).

Figure 7.13 – Deficiencies of children’s play areas in the west of North Manchester



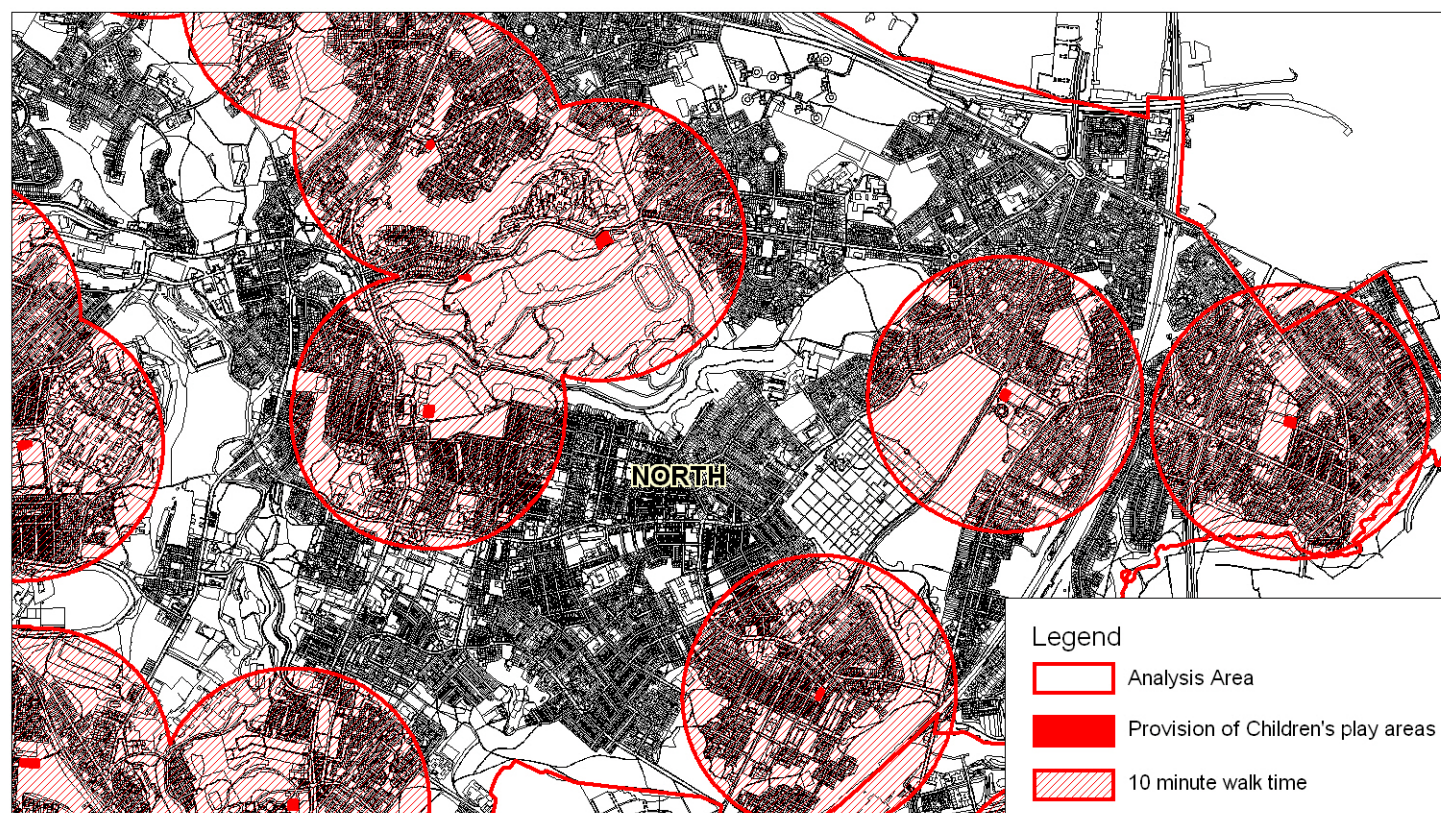
This map is reproduced from Ordnance Survey material with the permission of Ordnance Survey on behalf of the Controller of Her Majesty's Stationery Office © Crown copyright. Unauthorised reproduction infringes Crown copyright and may lead to prosecution or civil proceedings. (100019568) (2008).

NORTH

strategy financial delivery

pmp

Figure 7.14 – Deficiencies of children’s play areas in the east of North Manchester



This map is reproduced from Ordnance Survey material with the permission of Ordnance Survey on behalf of the Controller of Her Majesty's Stationery Office © Crown copyright. Unauthorised reproduction infringes Crown copyright and may lead to prosecution or civil proceedings. (100019568) (2008).

