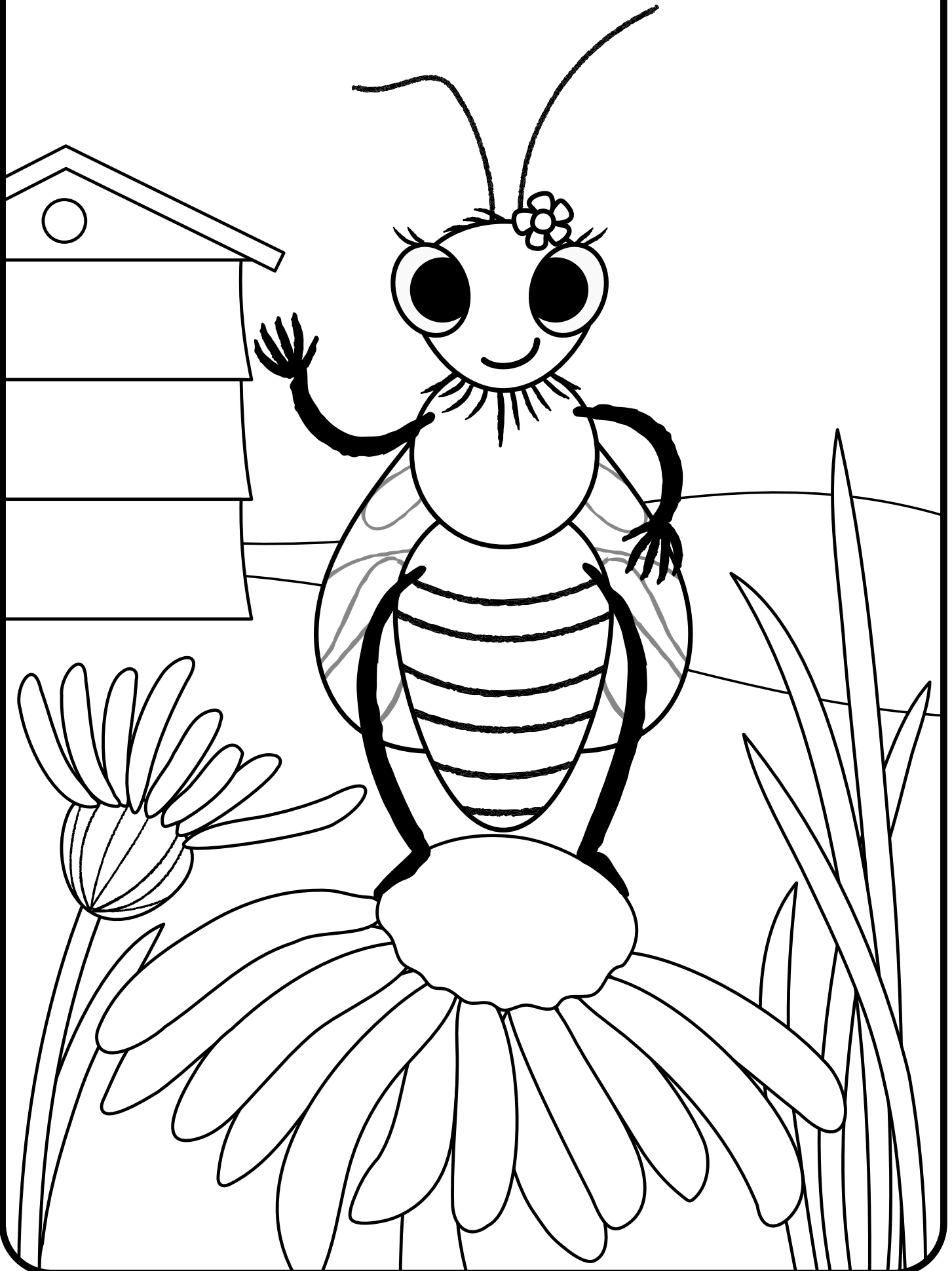


# Colour in Billie Bee!



# Useful information for Manchester families



## Get ready for primary school

If your child is starting Reception soon, get simple tips and find out how to access free expert local support to make sure your child has all the skills they need to thrive, at [manchester.gov.uk/readytolearn](https://manchester.gov.uk/readytolearn)

## Family Friend

For offers and free events and activities across the city for families, visit [manchester.gov.uk/Family-Friend](https://manchester.gov.uk/Family-Friend)

You can even sign up to our WhatsApp group to have timely updates sent straight to your phone!

## Cost of Living Advice Line

If increases in food and energy bills have left you struggling financially, you're not alone.

For support with everything from claiming benefits to help with rent, food and getting online, call **0800 023 2692**. This FREE advice line is open Monday to Friday 9am-4.30pm, or visit [manchester.gov.uk/coladvice](https://manchester.gov.uk/coladvice)