

One Team Neighbourhood Profile Fallowfield (Old Moat) and Withington Locality Updated September 2016

Background

Developing a better understanding of 'place' is a key part of the design work underpinning the implementation of the One Team and place-based care approach to the integration of health and social care in Manchester over the period up to 2020. This short report is one of a series of profiles for each of the 12 localities in the city. As a starting point, it draws upon the data that is readily available within Public Health England's Local Health tool but with the expectation that this could be expanded upon as the commissioning specification for place based care is developed further.

About the data

This profile has been generated using the functionality of Public Health England's Local Health tool. This tool contains quality assured data that can be used to compare any area (or combination of areas) with the local authority and England averages for a range of indicators. The tool also allows users to automatically generate a detailed, pre-formatted, profile of a selected area. The data in the tool was updated in September 2016 and this profile draws on that updated dataset.

This profile should be viewed alongside the more detailed data that has been collated within the JSNA Core Dataset and Compendium of Indicators ("A Picture of Progress") for each CCG in Manchester. Both of these are available on the Manchester City Council website.

Key features of the locality

The population living in the locality is characterised by:

- A *higher* than average proportion of people aged 16-24 years
- A *lower* than average proportion of people aged under 16; 25-64 years; 65 and over
- A *higher* than average proportion of people whose ethnicity is not 'White UK' and who cannot speak English well or at all

Compared with England as a whole, the locality has a *significantly worse*:

- Proportion of children achieving a good level of development at age 5
- Proportion of people living in overcrowded households (2011 Census)
- Proportion of pensioners living alone (2011 Census)
- Proportion of obese children in year 6
- Rate of emergency hospital admissions in 0-4 year olds
- Rate of A&E attendances in 0-4 year olds
- Rate of hospital admissions for injuries in under 0-4 year olds; 0-15 year olds
- Proportion of binge drinking adults
- Rate of emergency hospital admissions for all causes; coronary heart disease; stroke; COPD
- Incidence of lung cancer
- Mortality rate (all ages) for all causes, all cancer; all circulatory disease; coronary heart disease; respiratory disease
- Premature mortality rate (under 75) for all causes, all circulatory disease; coronary heart disease

Compared with England as a whole, the locality has a *significantly better*:

- Proportion of people with 'bad' or 'very bad' general health (2011 Census)
- Proportion of people with a limiting long term illness or disability (2011 Census)

- Proportion of people providing 1 hour or more and 50 hours or more unpaid care per week (2011 Census)
- Admission for injuries in 15-24 year olds
- Proportion of obese adults
- Rate of hospital stays for self harm and for alcohol related harm
- Rate of elective hospital admissions for hip replacement and for knee replacement

Issues to consider

- 1 The profile contains data for the locality as a whole. In practice, there will be differences between the wards and LSOAs within the locality and, as such, some parts of the locality will have higher or lower health needs (and generate a higher or lower demand on health and social care service) than the locality as a whole.
- 2 The data in the Local Health tool is based on the resident population of an area. CCG's responsibilities extend beyond this to cover patients registered with GP practices within their areas. Some of these patients may live outside of the locality and/or the city as a whole. Similarly, some of the people living within an area may be registered with a GP practice outside of it (or not registered with a GP practice at all).
- 3 The profile has been generated by combining the data for individual wards. Wards are an electoral geography which are designed by the Boundary Commission in order to ensure that local people have equal access to a locally elected representative. As such, they may not reflect the true boundaries of communities as they are understood on the ground.
- 4 Ward level data in Local Health has been estimated from MSOA data, population weighted using the mid-year population of the Output Areas that make up each ward. As such, the figures generated by the tool are a close approximation of the 'real' data for that ward rather than an exact match.

Further information

Local Health

<http://www.localhealth.org.uk/>

JSNA Core Dataset

http://www.manchester.gov.uk/downloads/download/3581/locality_jsna_core_dataset

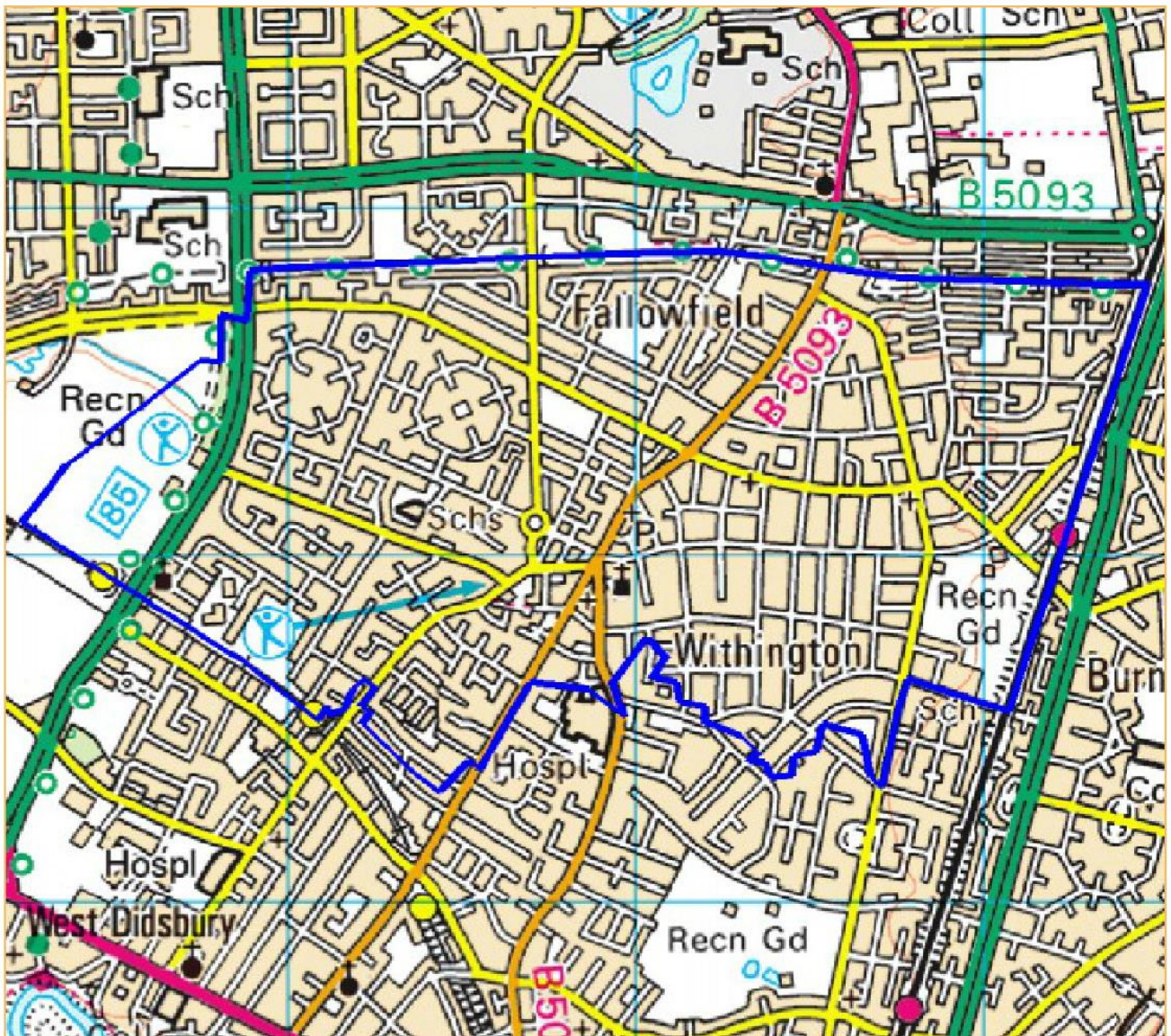
Compendium of Indicators ("A Picture of Progress")

http://www.manchester.gov.uk/downloads/download/5724/compendium_of_statistics-manchester



Fallowfield (Old Moat) and Withington Neighbourhood Profile (September 2016)

Presentation map



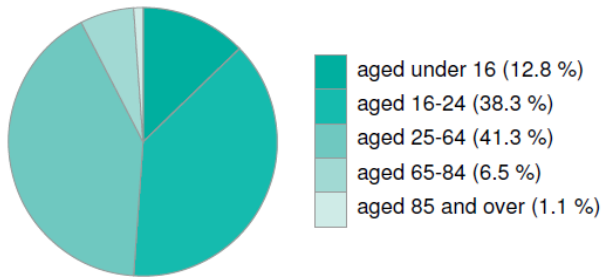
©PHE - © Crown copyright and database rights 2016, Ordnance Survey 100016969 – ONS © Crown Copyright 2016



Fallowfield (Old Moat) and Withington Neighbourhood Profile (September 2016)

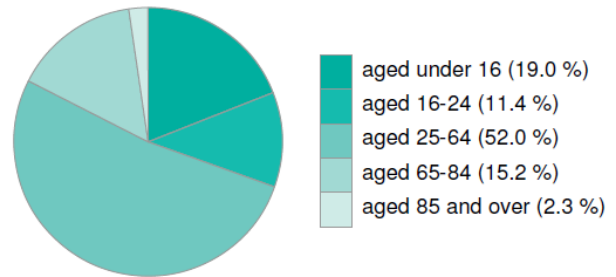
Population

Population by age group, 2014
Selection



Source: ONS © Crown copyright 2015 - total: 28,602

Population by age group, 2014
England



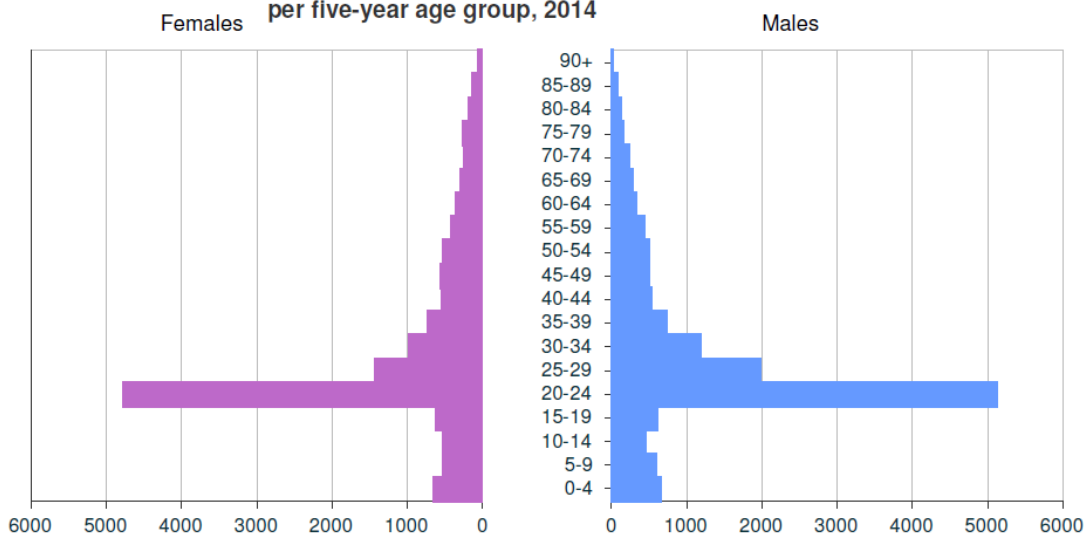
Source: ONS © Crown copyright 2015

Population by age group, 2014, numbers

Ages	Selection	Lower Tier Local Authority ()	Upper Tier Local Authority (Manchester)	England
aged under 16	3,655	//	103,600	10,303,556
aged 16-24	10,958	//	96,780	6,210,192
aged 25-64	11,815	//	270,481	28,265,162
aged 65-84	1,858	//	42,876	8,262,192
aged 85 and over	316	//	6,478	1,275,516
Total	28,602	//	520,215	54,316,618

Source: ONS © Crown copyright 2015

Age pyramid for selection: male and female numbers per five-year age group, 2014



Source: ONS © Crown Copyright 2015



Fallowfield (Old Moat) and Withington Neighbourhood Profile (September 2016)

Ethnicity & Language

Ethnicity & Language indicators, 2011, numbers

Indicator	Selection	Lower Tier Local Authority ()	Upper Tier Local Authority (Manchester)	England
Black and Minority Ethnic (BME) Population	6,945	//	168,018	7,731,314
Population whose ethnicity is not 'White UK'	9,223	//	204,890	10,733,220
Population who cannot speak English well or at all	571	//	16,579	843,845

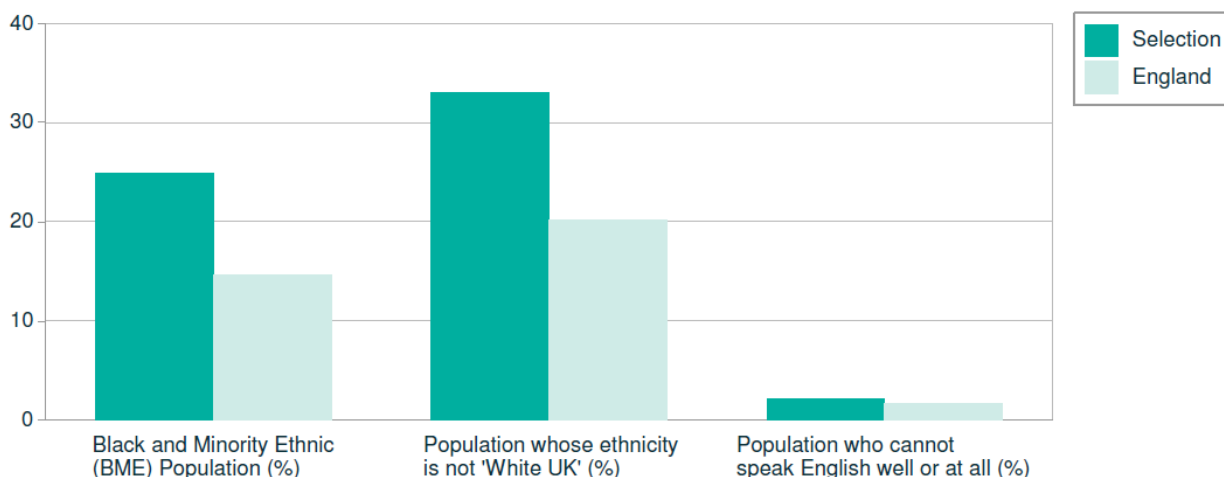
Source: ONS Census

Ethnicity & Language indicators, 2011, %

Indicator	Selection	Lower Tier Local Authority ()	Upper Tier Local Authority (Manchester)	England
Black and Minority Ethnic (BME) Population (%)	24.9	//	33.4	14.6
Population whose ethnicity is not 'White UK' (%)	33	//	40.7	20.2
Population who cannot speak English well or at all (%)	2.1	//	3.4	1.7

Source: ONS Census

Ethnicity & Language indicators, 2011, %, Selection



Source: ONS Census



Fallowfield (Old Moat) and Withington Neighbourhood Profile (September 2016)

Child Development, Education and Employment

Child development, education and employment indicators, numbers (estimated from MSOA level data)

Table with 5 columns: Indicator, Selection, Lower Tier Local Authority, Upper Tier Local Authority, and England. Rows include birth weight, development at age 5, GCSE achievement, and job seekers allowance.

Source: Public Health England, ONS, NOMIS, DiE

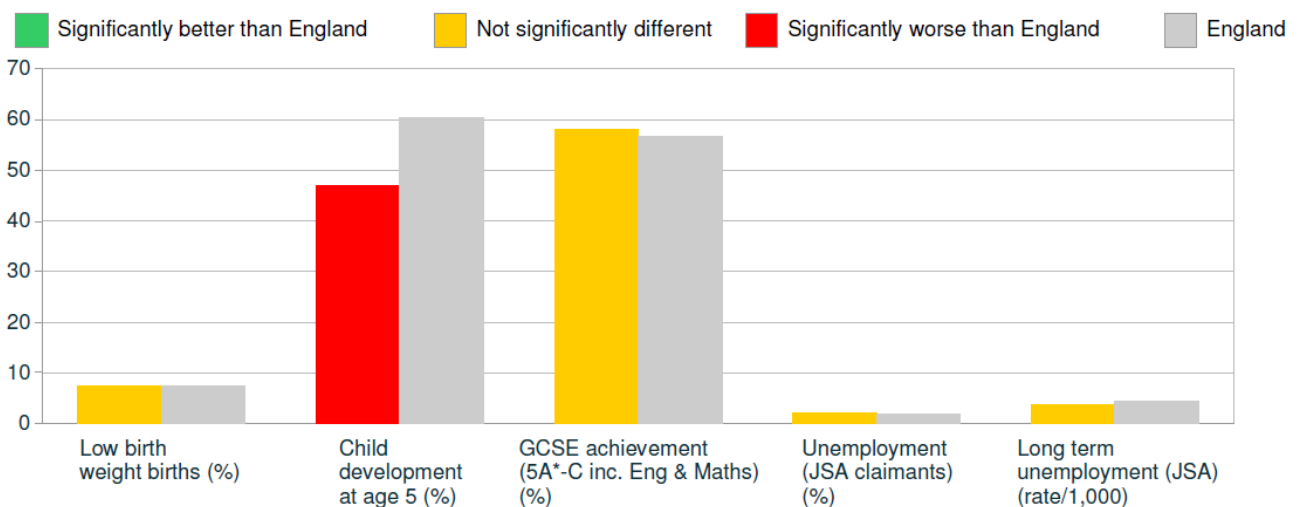
* Monthly average

Child development, education and employment indicators, values (estimated from MSOA level data)

Table with 5 columns: Indicator, Selection, Lower Tier Local Authority, Upper Tier Local Authority, and England. Rows show percentages for birth weight, development at age 5, GCSE achievement, and unemployment.

Source: Public Health England, ONS, NOMIS, DiE

Child development, education and employment indicators, Selection (comparing to England average)



Source: Public Health England, ONS, NOMIS, DiE



Fallowfield (Old Moat) and Withington Neighbourhood Profile (September 2016)

Health and Care

Health and care indicators, 2011, numbers

Indicator	Selection	Lower Tier Local Authority ()	Upper Tier Local Authority (Manchester)	England
General health: very bad	351	//	8,676	660,749
General health: bad or very bad	1,337	//	35,690	2,911,195
Limiting long term illness or disability	3,648	//	89,364	9,352,586
Provides unpaid care for 1 or more hours per week	1,868	//	42,640	5,430,016
Provides unpaid care for 50 or more hours per week	455	//	11,963	1,256,237

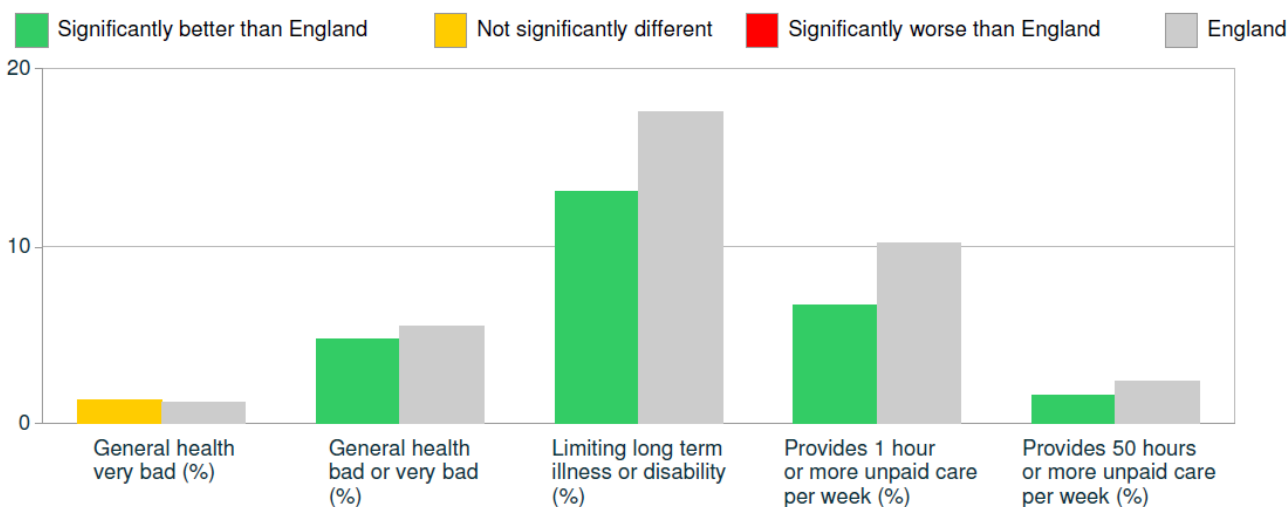
Source: ONS Census

Health and care indicators, 2011, %

Indicator	Selection	Lower Tier Local Authority ()	Upper Tier Local Authority (Manchester)	England
General health very bad (%)	1.3	//	1.7	1.2
General health bad or very bad (%)	4.8	//	7.1	5.5
Limiting long term illness or disability (%)	13.1	//	17.8	17.6
Provides 1 hour or more unpaid care per week (%)	6.7	//	8.5	10.2
Provides 50 hours or more unpaid care per week (%)	1.6	//	2.4	2.4

Source: ONS Census

Health and care indicators, 2011, %, Selection (comparing to England average)



Source: ONS Census
www.localhealth.org.uk



Fallowfield (Old Moat) and Withington Neighbourhood Profile (September 2016)

Housing and Living Environment

Housing and living environment indicators, 2011, numbers

Indicator	Selection	Lower Tier Local Authority ()	Upper Tier Local Authority (Manchester)	England
Households with central heating	9,919	//	198,559	21,468,807
Overcrowded households (at least 1 room too few)	2,028	//	33,673	1,928,596
Pensioners living alone	889	//	18,891	2,725,596

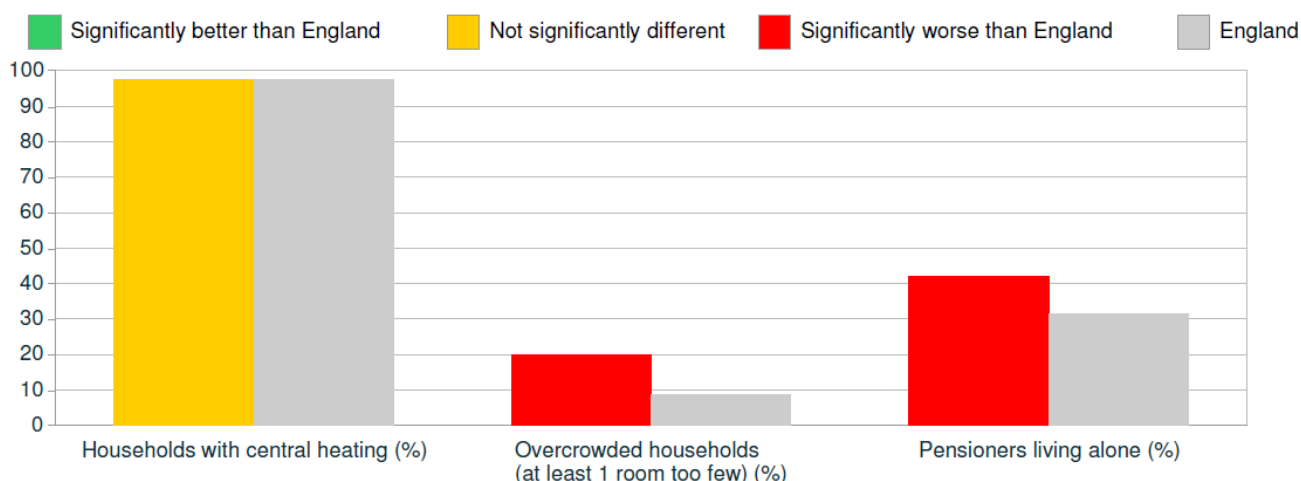
Source: ONS Census

Housing and living environment indicators, 2011, %

Indicator	Selection	Lower Tier Local Authority ()	Upper Tier Local Authority (Manchester)	England
Households with central heating (%)	97.5	//	96.9	97.3
Overcrowded households (at least 1 room too few) (%)	19.9	//	16.4	8.7
Pensioners living alone (%)	42.1	//	39.7	31.5

Source: ONS Census

Housing and living environment indicators, 2011, %, Selection (comparing to England average)



Source: ONS Census



Fallowfield (Old Moat) and Withington Neighbourhood Profile (September 2016)

Children's Weight

Children's weight indicators, 2012/13-2014/15, numbers

Indicator	Selection	Lower Tier Local Authority ()	Upper Tier Local Authority (Manchester)	England
Obese children (reception year)	67	//	2,140	164,987
Children with excess weight (reception year)	141	//	4,647	395,264
Obese children (year 6)	111	//	3,566	291,075
Children with excess weight (year 6)	173	//	5,755	510,175

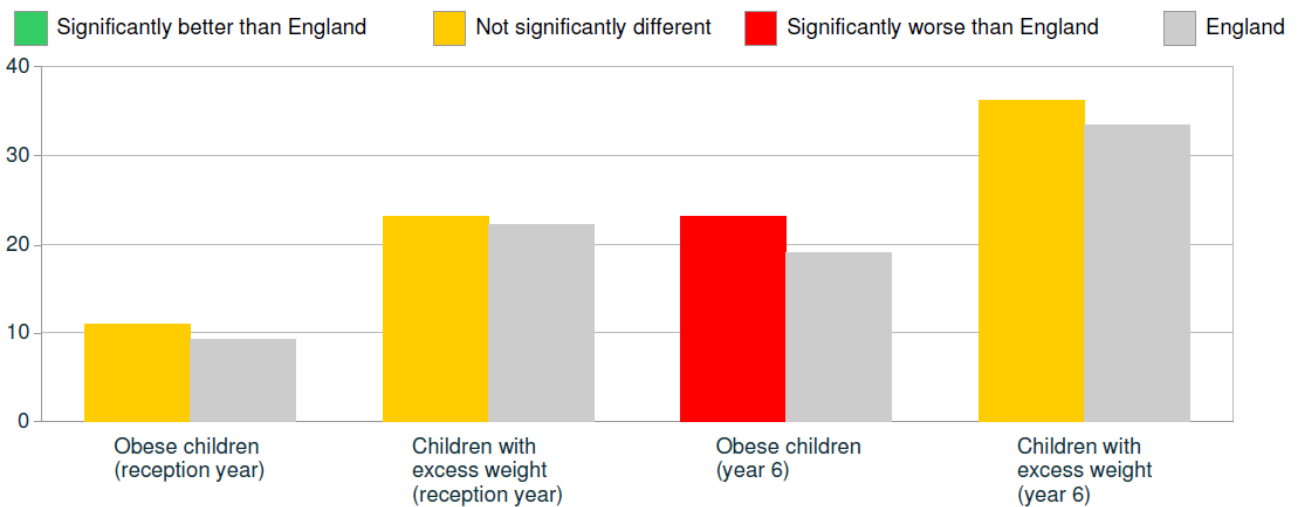
Source: Public Health England & HSCIC © 2012-2015

Children's weight indicators, 2012/13-2014/15, %

Indicator	Selection	Lower Tier Local Authority ()	Upper Tier Local Authority (Manchester)	England
Obese children (reception year)	11	//	11.6	9.3
Children with excess weight (reception year)	23.1	//	25.2	22.2
Obese children (year 6)	23.1	//	24.4	19
Children with excess weight (year 6)	36.2	//	39.4	33.4

Source: Public Health England & HSCIC © 2012-2015

Children's weight indicators, %, Selection (comparing to England average)



Source: Public Health England & HSCIC © 2012-2015



Fallowfield (Old Moat) and Withington Neighbourhood Profile (September 2016)

Children’s health care activity

Children’s health care activity indicators, numbers (estimated from MSOA level data)

indicator	Selection	Lower Tier Local Authority ()	Upper Tier Local Authority (Manchester)	England
Emergency admissions in 0-4 year olds (2012/13-14/	866	//	26,254	1,508,499
A&E attendances in 0-4 year olds (2012/13-14/15)	2,879	//	96,038	5,463,709
Admissions for injury in 0-4 year olds (2010/11-14/15	148	//	4,726	237,295
Admissions for injury in 0-15 year olds (2010/11-14/1	264	//	8,397	530,253
Admissions for injury in 15-24 year olds (2010/11-14/	480	//	6,199	479,780

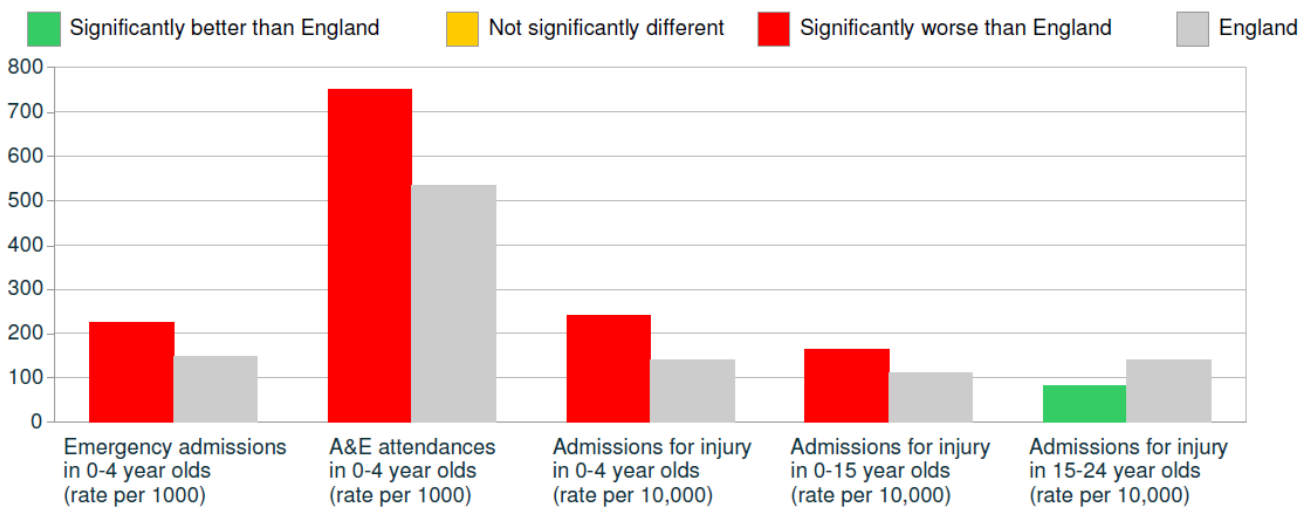
Source: Public Health England, HSCIC © Copyright 2016

Children’s health care activity indicators, values (estimated from MSOA level data)

indicator	Selection	Lower Tier Local Authority ()	Upper Tier Local Authority (Manchester)	England
Emergency admissions in 0-4 year olds (rate per 100	225.5	//	231.1	147.3
A&E attendances in 0-4 year olds (rate per 1000)	750	//	845.5	533.6
Admissions for injury in 0-4 year olds (rate per 10,000	240.7	//	254.4	140.8
Admissions for injury in 0-15 year olds (rate per 10,000	164	//	178.3	111.7
Admissions for injury in 15-24 year olds (rate per 10,000	83.3	//	120.4	139.5

Source: Public Health England, HSCIC © Copyright 2016

Children’s health care activity indicators, Selection (comparing to England average)



Source: Public Health England, HSCIC © Copyright 2016



Fallowfield (Old Moat) and Withington Neighbourhood Profile (September 2016)

Adults' lifestyle

Adults' lifestyle indicators, 2006-08, numbers (estimated from MSOA level data)

Indicator	Selection	Lower Tier Local Authority ()	Upper Tier Local Authority (Manchester)	England
Obese adults	3,148	//	78,842	9,983,436
Binge drinking adults	9,103	//	108,415	8,290,798
Healthy eating adults	6,488	//	99,017	11,907,157

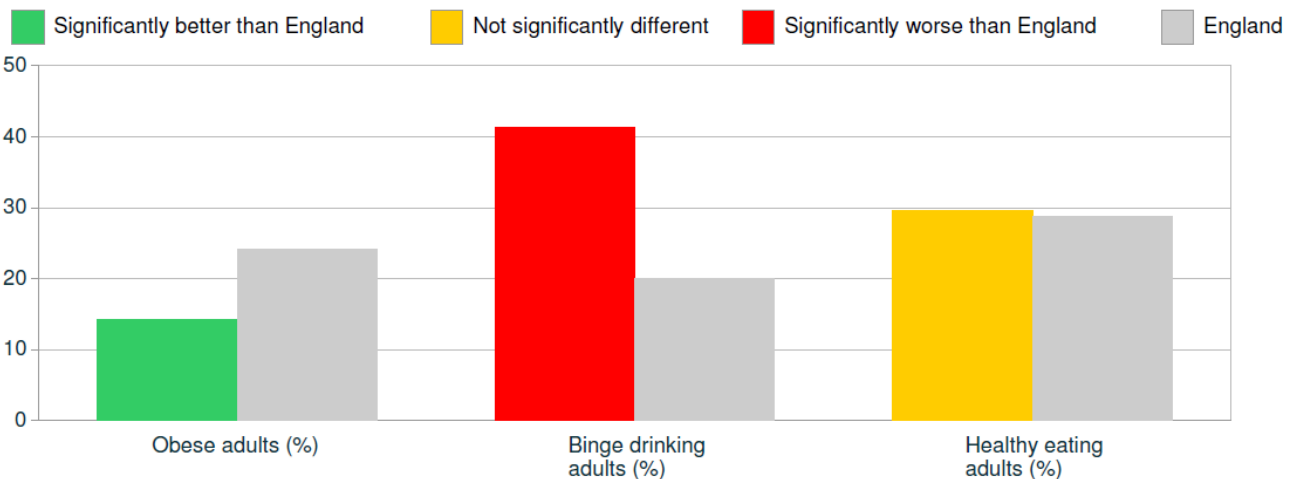
Source: Public Health England © Copyright 2010

Adults' lifestyle indicators, 2006-08, % (estimated from MSOA level data)

Indicator	Selection	Lower Tier Local Authority ()	Upper Tier Local Authority (Manchester)	England
Obese adults (%)	14.3	//	21.1	24.1
Binge drinking adults (%)	41.4	//	29	20
Healthy eating adults (%)	29.5	//	26.5	28.7

Source: Public Health England © Copyright 2010

Adults' lifestyle indicators, %, Selection (comparing to England average)



Source: Public Health England © Copyright 2010



Fallowfield (Old Moat) and Withington Neighbourhood Profile (September 2016)

Emergency hospital admissions

Emergency Hospital Admissions, numbers, 2010/11 to 2014/15 (estimated from MSOA level data)

Indicator	Selection	Lower Tier Local Authority ()	Upper Tier Local Authority (Manchester)	England
Emergency hospital admissions for all causes	11,705	//	307,985	26,462,290
Emergency hospital admissions for CHD*	276	//	6,468	690,158
Emergency hospital admissions for stroke	132	//	2,849	389,174
Emergency hospital admissions for MI*	94	//	2,251	322,544
Emergency hospital admissions for COPD*	269	//	7,897	572,993

Source: Public Health England, HSCIC © Copyright 2016

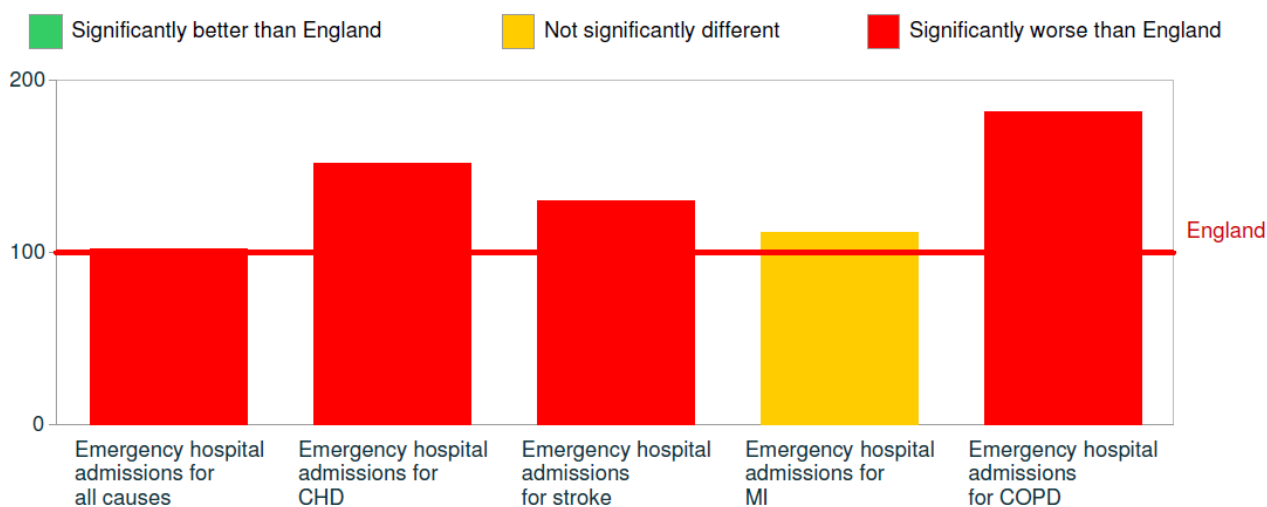
* CHD: Coronary Heart Disease; MI: Myocardial Infarction (heart attack); COPD: Chronic Obstructive Pulmonary Disease

Emergency Hospital Admissions, Standardised Admission Ratios (SARs), 2010/11 to 2014/15 (est. from MSOA data)

Indicator	Selection	Lower Tier Local Authority ()	Upper Tier Local Authority (Manchester)	England
Emergency hospital admissions for all causes	102.5	//	142	100
Emergency hospital admissions for CHD	151.6	//	157.3	100
Emergency hospital admissions for stroke	130.1	//	127	100
Emergency hospital admissions for MI	111.6	//	117.9	100
Emergency hospital admissions for COPD	182.2	//	241.3	100

Source: Public Health England, HSCIC © Copyright 2016

Emergency Hospital admissions, SARs, 2010/11 to 2014/15, Selection (comparing to England average)



Source: Public Health England, HSCIC © Copyright 2016



Fallowfield (Old Moat) and Withington Neighbourhood Profile (September 2016)

Cancer incidence

Cancer incidence, numbers, 2010-2014 (estimated from MSOA level data)

Indicator	Selection	Lower Tier Local Authority ()	Upper Tier Local Authority (Manchester)	England
All cancer	420	//	10,062	1,438,018
Breast cancer	57	//	1,375	217,374
Colorectal cancer	45	//	1,101	171,934
Lung cancer	76	//	1,938	182,547
Prostate cancer	45	//	972	191,596

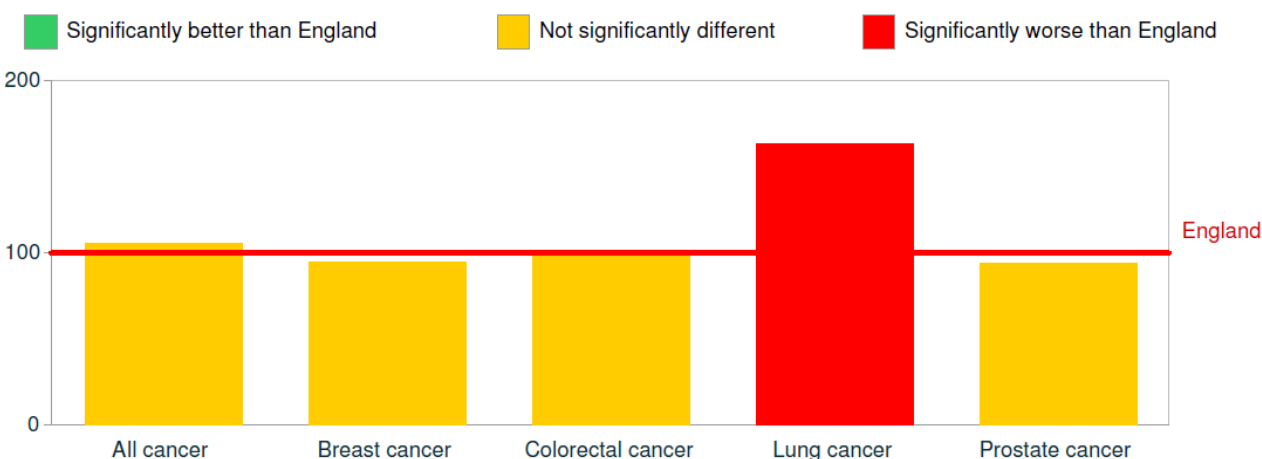
Source: ONS Cancer incidence data, combining cancer registration data from all PHE cancer registration teams

Cancer incidence, Standardised Incidence Ratios (SIRs), 2010-2014 (estimated from MSOA level data)

Indicator	Selection	Lower Tier Local Authority ()	Upper Tier Local Authority (Manchester)	England
All cancer	105.3	//	115.3	100
Breast cancer	94.9	//	100	100
Colorectal cancer	98.5	//	110.2	100
Lung cancer	163.8	//	188.7	100
Prostate cancer	93.9	//	92	100

Source: ONS Cancer incidence data, combining cancer registration data from all PHE cancer registration teams

Cancer incidence, SIRs, 2010-2014, Selection (comparing to England average)



Source: ONS Cancer incidence data, combining cancer registration data from all PHE cancer registration teams



Fallowfield (Old Moat) and Withington Neighbourhood Profile (September 2016)

Hospital admissions - harm and injury

Hospital admissions - harm and injury, numbers, 2010/11 to 2014/15 (estimated from MSOA level data)

Indicator	Selection	Lower Tier Local Authority ()	Upper Tier Local Authority (Manchester)	England
Hospital stays for self harm	274	//	6,658	536,671
Hospital stays for alcohol related harm	658	//	17,417	1,617,761
Emergency admissions for hip fracture aged 65+	64	//	1,624	279,803
Elective hospital admissions for hip replacement	56	//	1,438	329,316
Elective hospital admissions for knee replacement	63	//	1,883	363,154

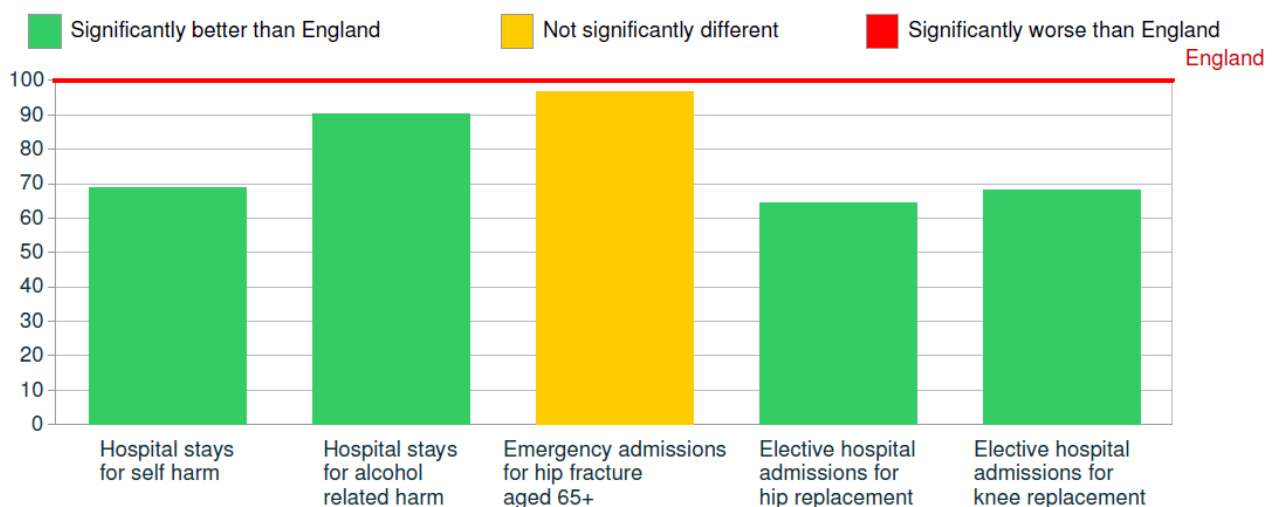
Source: Public Health England, HSCIC © Copyright 2016

Hospital admissions - harm and injury, Standardised Admission Ratios (SARs), 2010/11 to 2014/15 (est. from MSOA)

Indicator	Selection	Lower Tier Local Authority ()	Upper Tier Local Authority (Manchester)	England
Hospital stays for self harm	68.9	//	111.3	100
Hospital stays for alcohol related harm	90.3	//	129.6	100
Emergency admissions for hip fracture aged 65+	96.6	//	108.3	100
Elective hospital admissions for hip replacement	64.5	//	74.3	100
Elective hospital admissions for knee replacement	68.2	//	91.1	100

Source: Public Health England, HSCIC © Copyright 2016

Hospital admissions - harm and injury, SARs, 2010/11 to 2014/15, Selection (comparing to England average)



Source: Public Health England, HSCIC © Copyright 2016



Fallowfield (Old Moat) and Withington Neighbourhood Profile (September 2016)

Mortality and causes of death - all ages

Causes of deaths - all ages, numbers, 2010-2014

Indicator	Selection	Lower Tier Local Authority ()	Upper Tier Local Authority (Manchester)	England
All causes	722	//	17,674	2,323,083
All cancer	201	//	4,837	660,879
All circulatory disease	199	//	4,736	686,806
Coronary heart disease	101	//	2,358	320,773
Stroke	47	//	1,189	178,673
Respiratory diseases	113	//	2,705	318,650

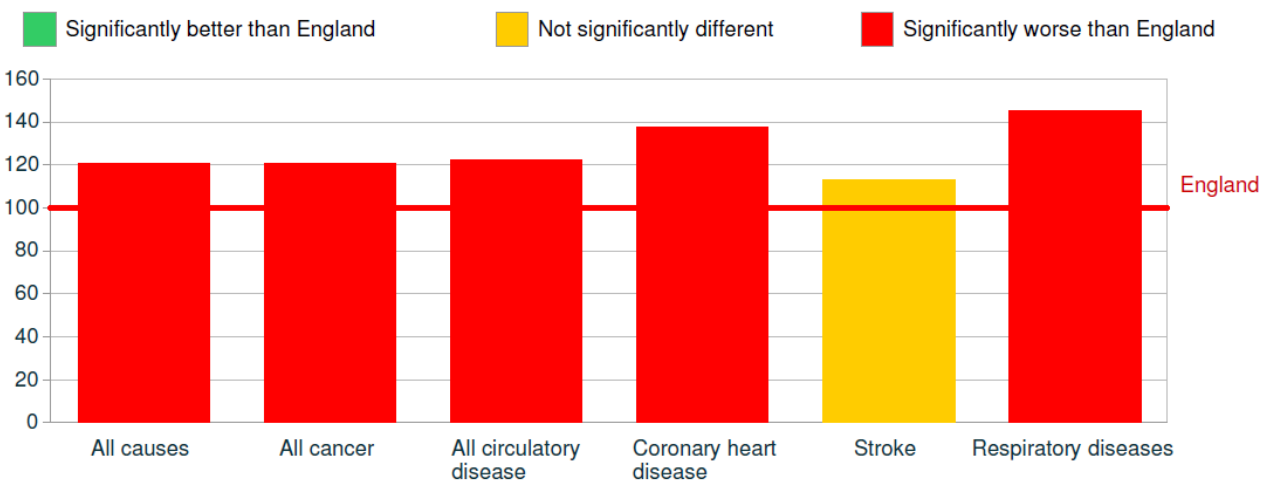
Source: Public Health England, produced from ONS data Copyright © 2016

Causes of deaths - all ages, Standardised Mortality Ratios (SMRs), 2010-2014

Indicator	Selection	Lower Tier Local Authority ()	Upper Tier Local Authority (Manchester)	England
All causes	120.6	//	133	100
All cancer	120.4	//	128.2	100
All circulatory disease	122.3	//	130.6	100
Coronary heart disease	137.6	//	142.9	100
Stroke	112.8	//	128.1	100
Respiratory diseases	145	//	155.2	100

Source: Public Health England, produced from ONS data Copyright © 2016

Causes of deaths - all ages, SMRs, 2010-2014, Selection (comparing to England average)



Source: Public Health England, produced from ONS data Copyright © 2016



Fallowfield (Old Moat) and Withington Neighbourhood Profile (September 2016)

Mortality and causes of death - premature mortality

Causes of deaths - premature mortality, numbers, 2010-2014

Indicator	Selection	Lower Tier Local Authority ()	Upper Tier Local Authority (Manchester)	England
All causes, aged under 65	140	//	4,258	391,312
All causes, aged under 75	272	//	7,674	762,945
All cancer, aged under 75	96	//	2,608	310,346
All circulatory disease, aged under 75	70	//	1,816	176,217
Coronary heart disease, aged under 75	41	//	1,035	99,575

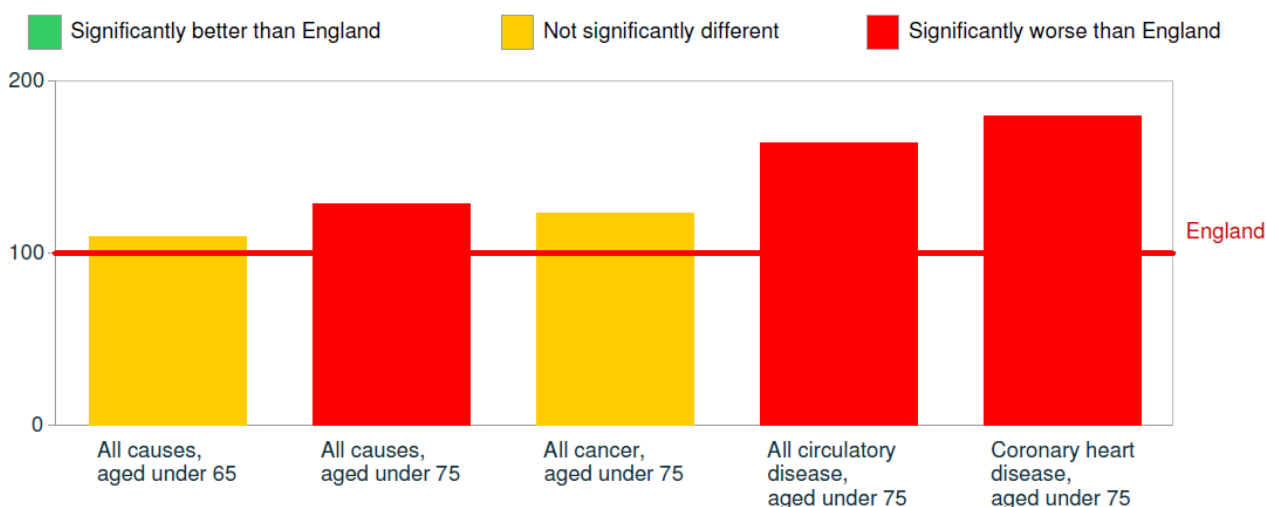
Source: Public Health England, produced from ONS data Copyright © 2016

Causes of deaths - premature mortality, Standardised Mortality Ratios (SMRs), 2010-2014

Indicator	Selection	Lower Tier Local Authority ()	Upper Tier Local Authority (Manchester)	England
All causes, aged under 65	109.7	//	148	100
All causes, aged under 75	129	//	157.3	100
All cancer, aged under 75	123.1	//	138.8	100
All circulatory disease, aged under 75	164.5	//	177.2	100
Coronary heart disease, aged under 75	180.2	//	186.3	100

Source: Public Health England, produced from ONS data Copyright © 2016

Causes of deaths - premature mortality, SMRs, 2010-2014, Selection (comparing to England average)



Source: Public Health England, produced from ONS data Copyright © 2016 www.localhealth.org.uk