

Characteristics of workers in workplace zones in Manchester

2011 Census (v1.2)

Linda Frost
Public Intelligence, Chief Executive's Department
September 2014

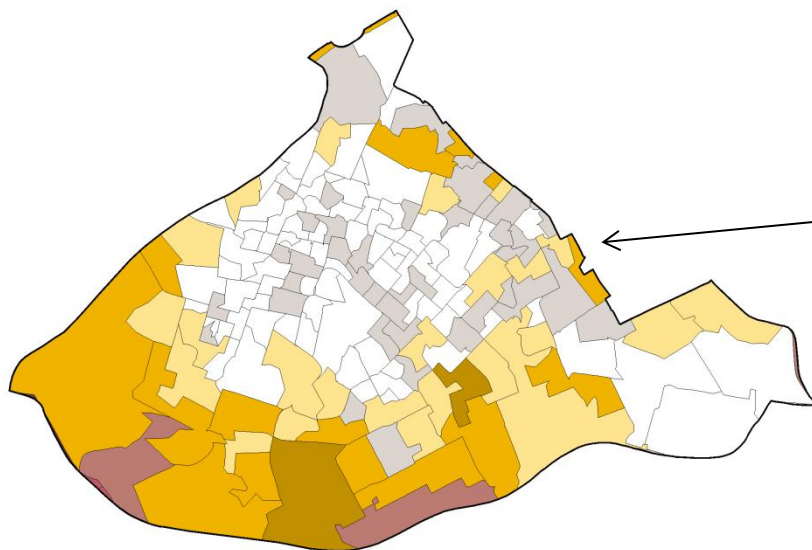
Table of Contents

Where workers in workplace zones live.....	3
Distance travelled to work in workplace zones.....	8
Method of travel to work in workplace zones.....	16
Industry of workers employed in workplace zones	23
Occupation of workers in workplace zones	33

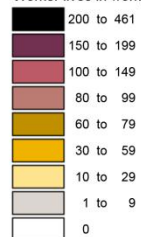
All data sourced from 2011 Census (Tables WP605EW, WP702EW, WP703EW and WP7013ew), Office for National Statistics (ONS). © Crown copyright.

Where workers in workplace zones live

Workers live and work in City Centre workplace zone



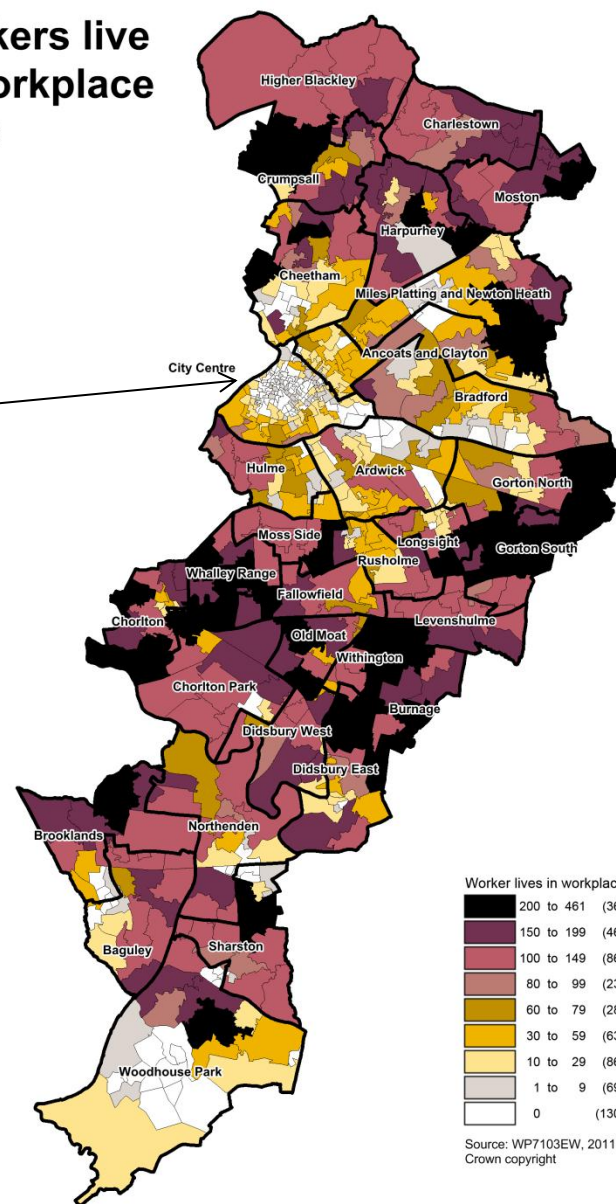
Worker lives in workplace zone



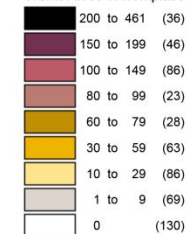
Source: WP7103EW, 2011 Census, ONS.
Crown copyright

Crown copyright. All rights reserved. Manchester City Council 100019568 (2014)

Workers live in workplace zone



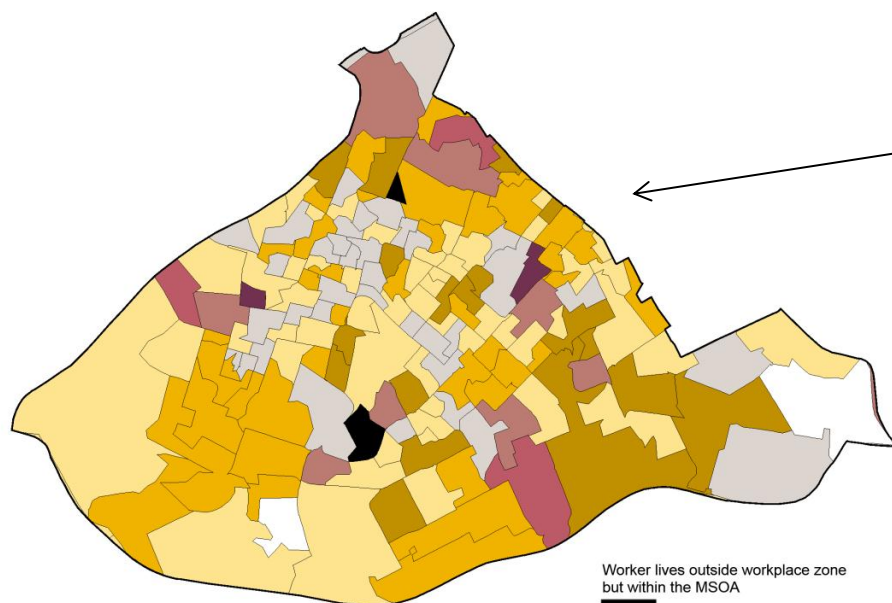
Worker lives in workplace zone



Source: WP7103EW, 2011 Census, ONS.
Crown copyright

Crown copyright. All rights reserved. Manchester City Council 100019568 (2014)

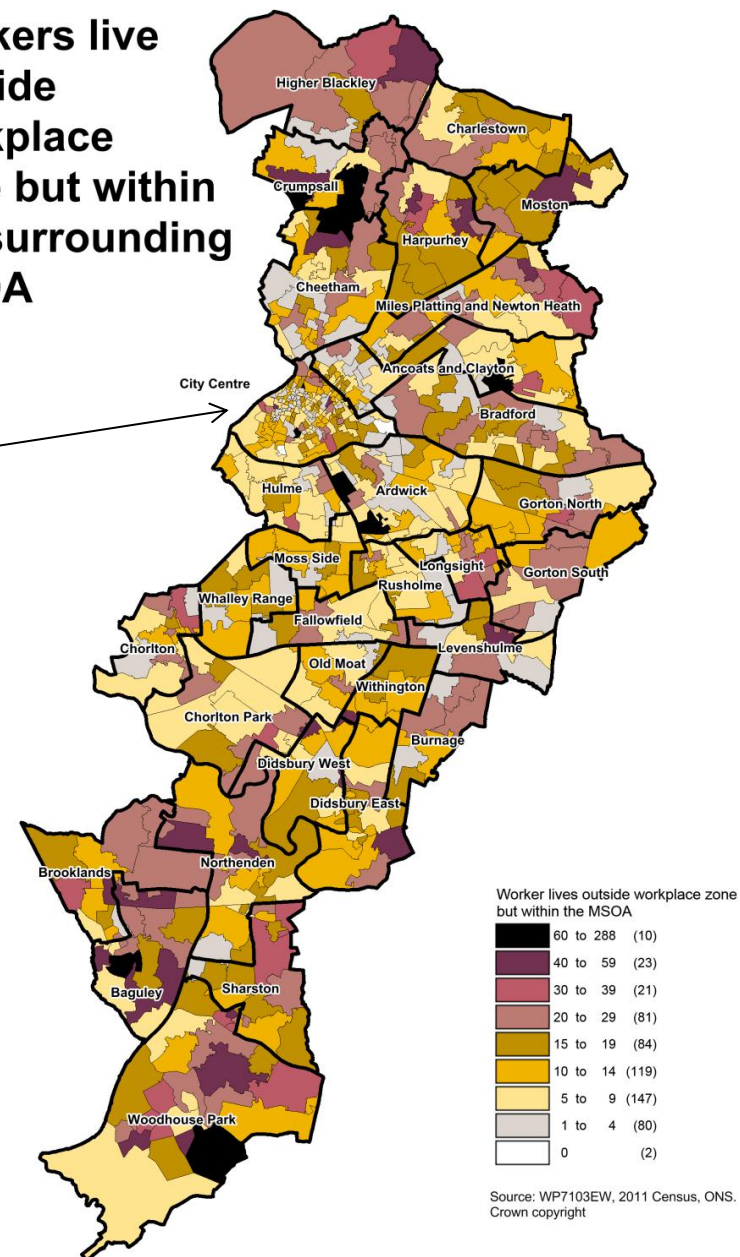
Workers live outside City Centre workplace zone but within the surrounding MSOA



Source: WP7103EW, 2011 Census, ONS.
Crown copyright

Crown copyright. All rights reserved. Manchester City Council 100019568 (2014)

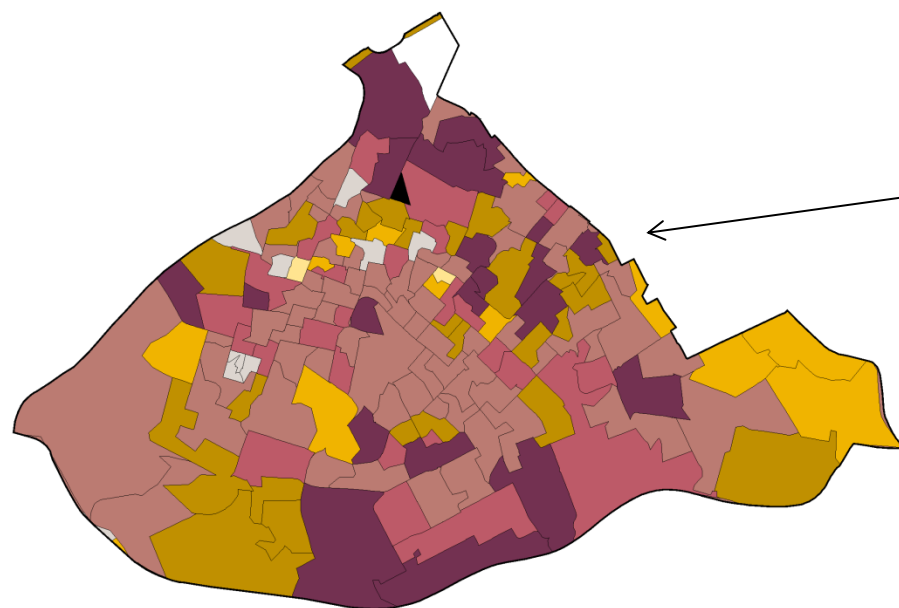
Workers live outside workplace zone but within the surrounding MSOA



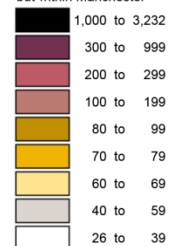
Source: WP7103EW, 2011 Census, ONS.
Crown copyright

Crown copyright. All rights reserved. Manchester City Council 100019568 (2014)

Workers live outside City Centre MSOAs but within Manchester



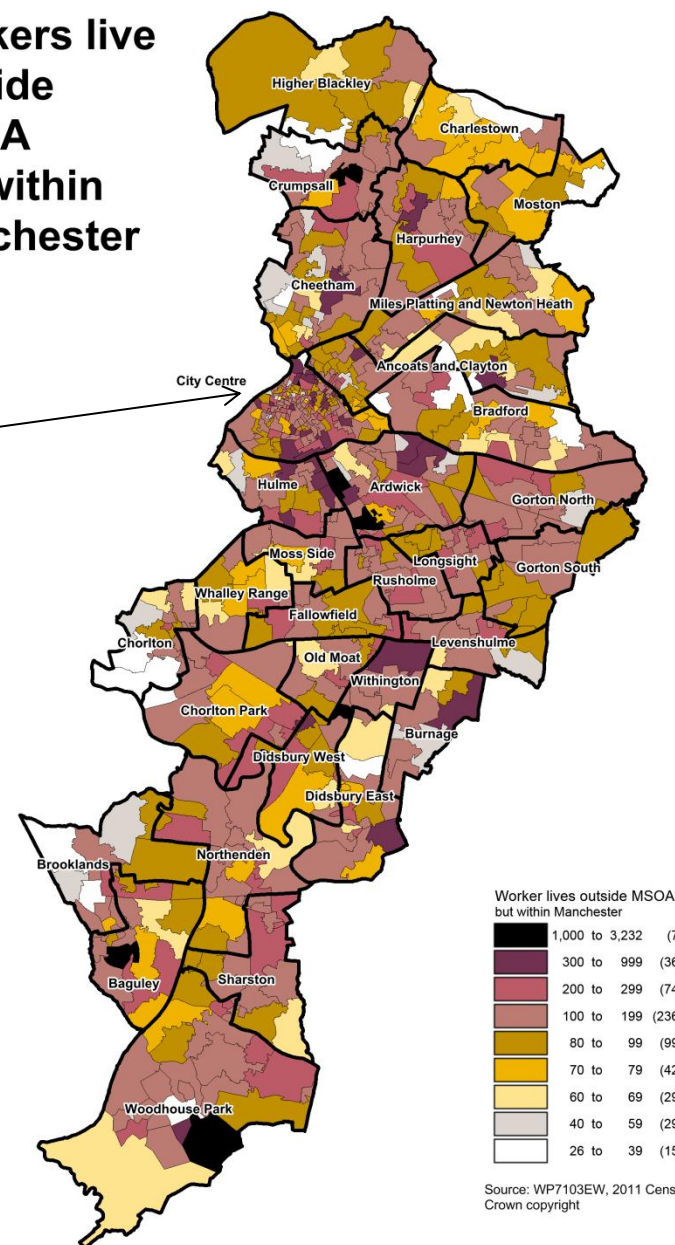
Worker lives outside MSOA but within Manchester



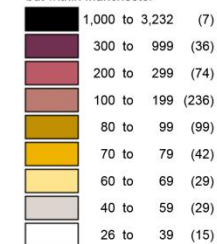
Source: WP7103EW, 2011 Census, ONS.
Crown copyright

Crown copyright. All rights reserved. Manchester City Council 100019568 (2014)

Workers live outside MSOA but within Manchester



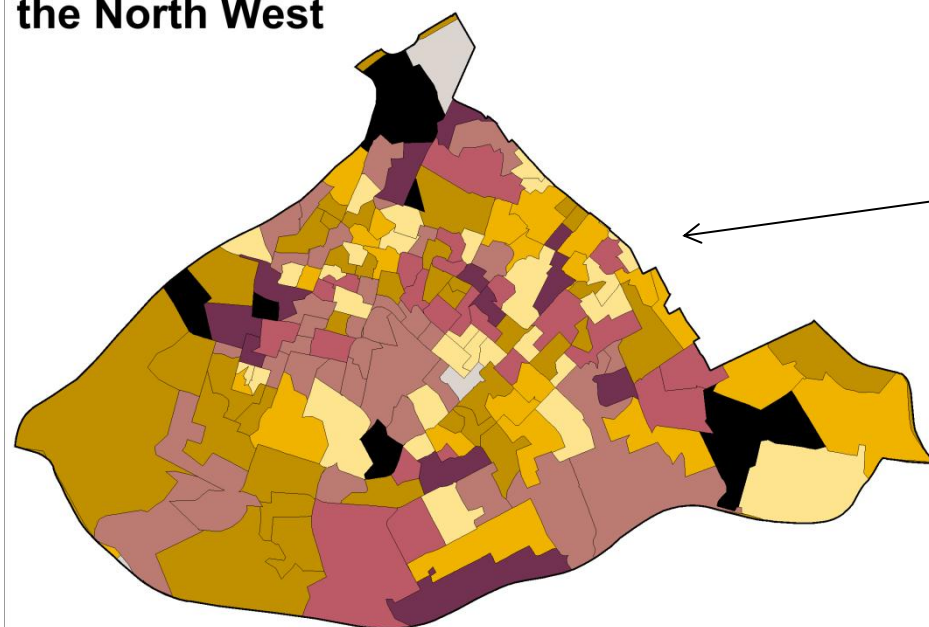
Worker lives outside MSOA but within Manchester



Source: WP7103EW, 2011 Census, ONS.
Crown copyright

Crown copyright. All rights reserved. Manchester City Council 100019568 (2014)

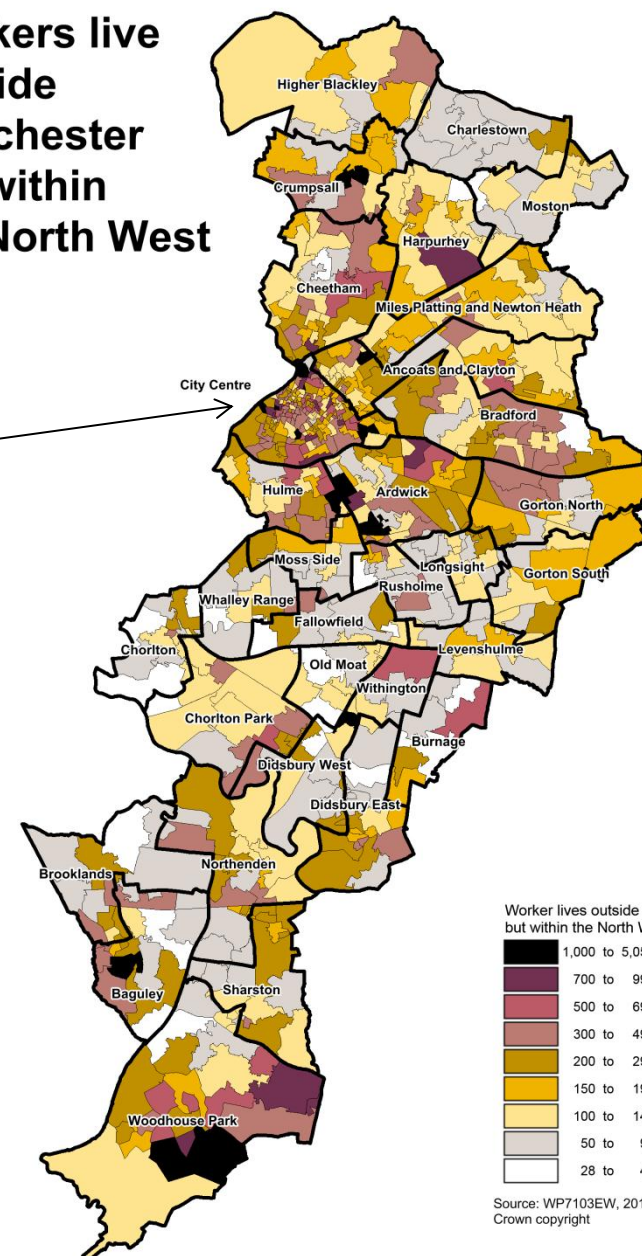
Workers in City Centre live outside Manchester but within the North West



Source: WP7103EW, 2011 Census, ONS.
Crown copyright

Crown copyright. All rights reserved. Manchester City Council 100019568 (2014)

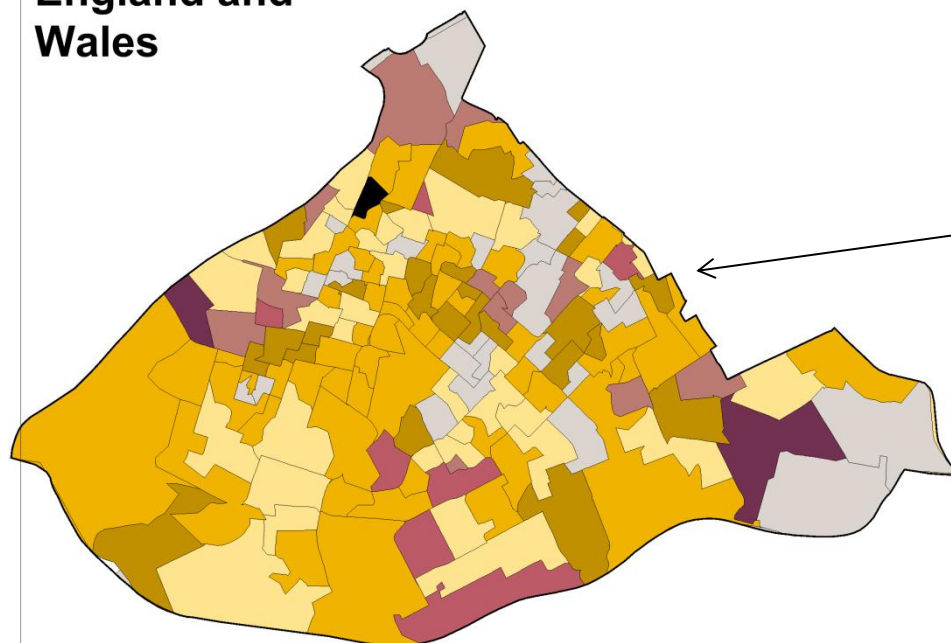
Workers live outside Manchester but within the North West



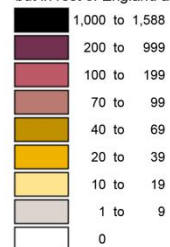
Source: WP7103EW, 2011 Census, ONS.
Crown copyright

Crown copyright. All rights reserved. Manchester City Council 100019568 (2014)

Workers in City Centre live outside the North West but within England and Wales



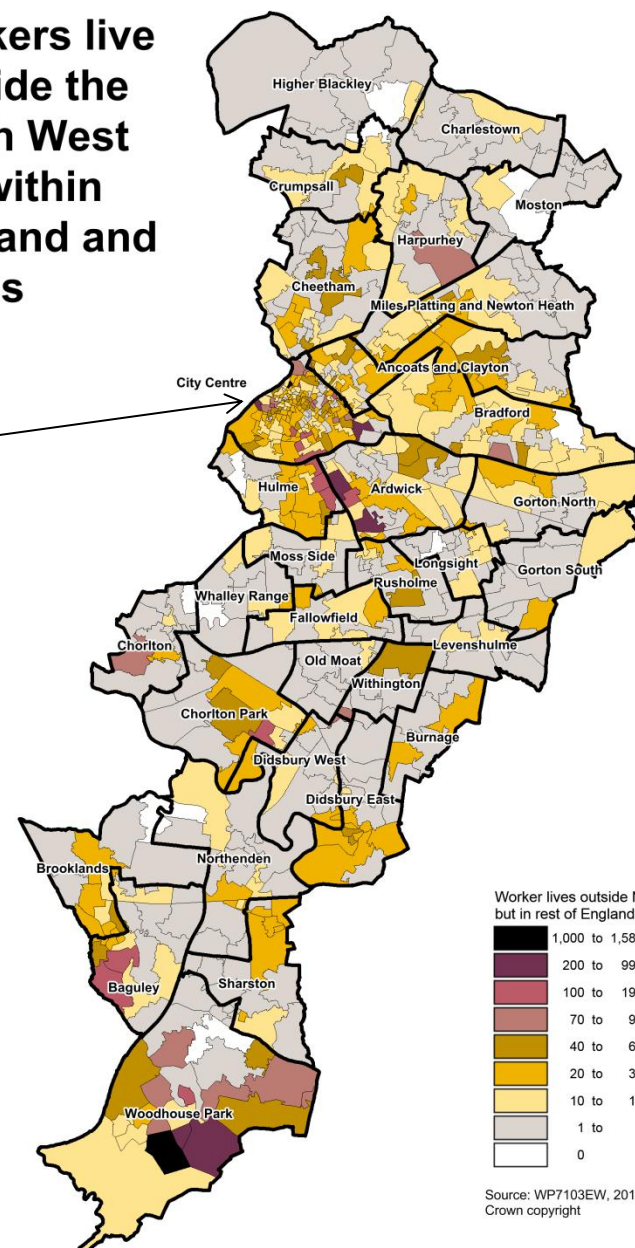
Worker lives outside North West but in rest of England and Wales



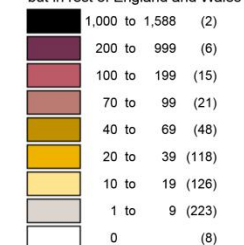
Source: WP7103EW, 2011 Census, ONS.
Crown copyright

Crown copyright. All rights reserved. Manchester City Council 100019568 (2014)

Workers live outside the North West but within England and Wales



Worker lives outside North West but in rest of England and Wales

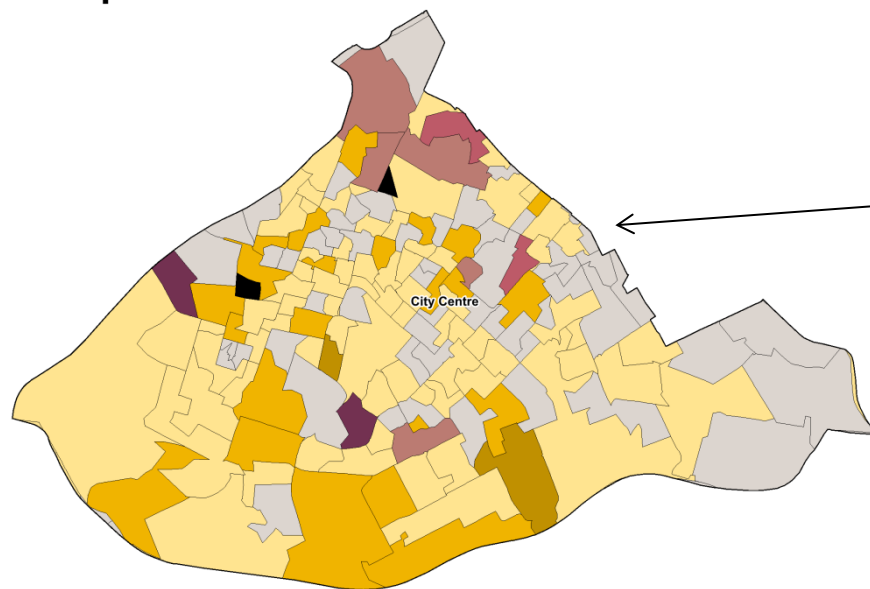


Source: WP7103EW, 2011 Census, ONS.
Crown copyright

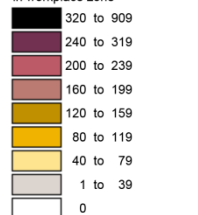
Crown copyright. All rights reserved. Manchester City Council 100019568 (2014)

Distance travelled to work in workplace zones

**Travel
less than
2km to work in
City Centre
workplace zones**



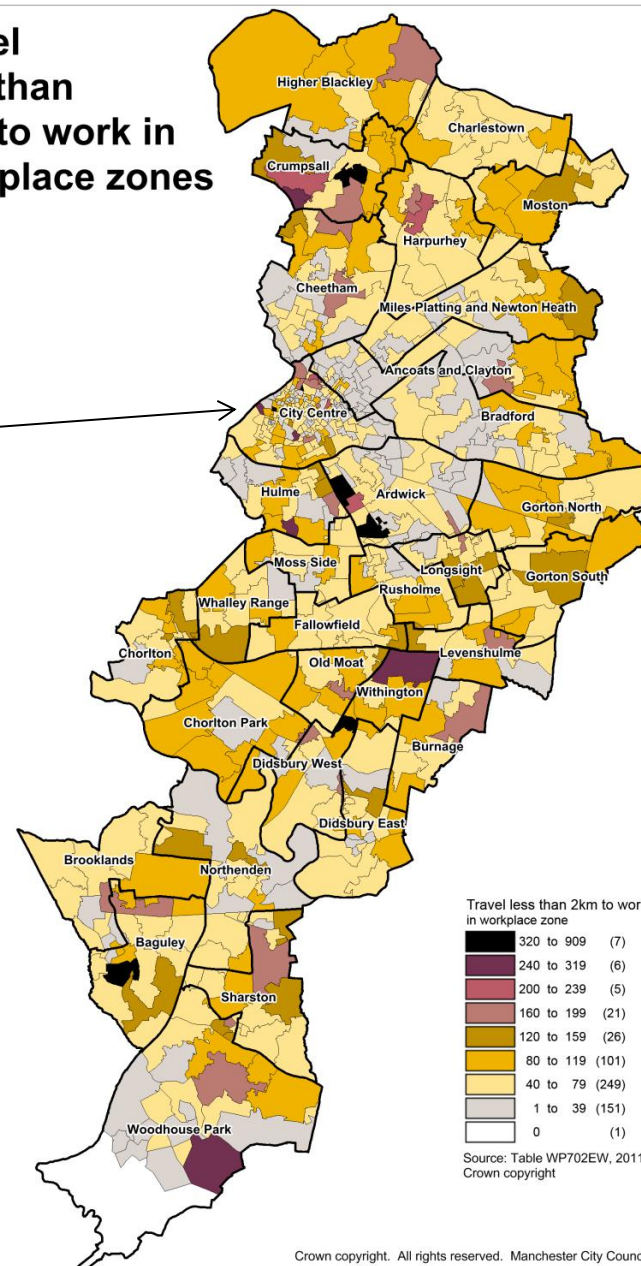
Travel less than 2km to work
in workplace zone



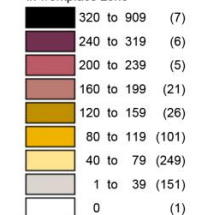
Source: Table WP702EW, 2011 Census, ONS.
Crown copyright

Crown copyright. All rights reserved. Manchester City Council 100019568 (2014)

**Travel
less than
2km to work in
workplace zones**



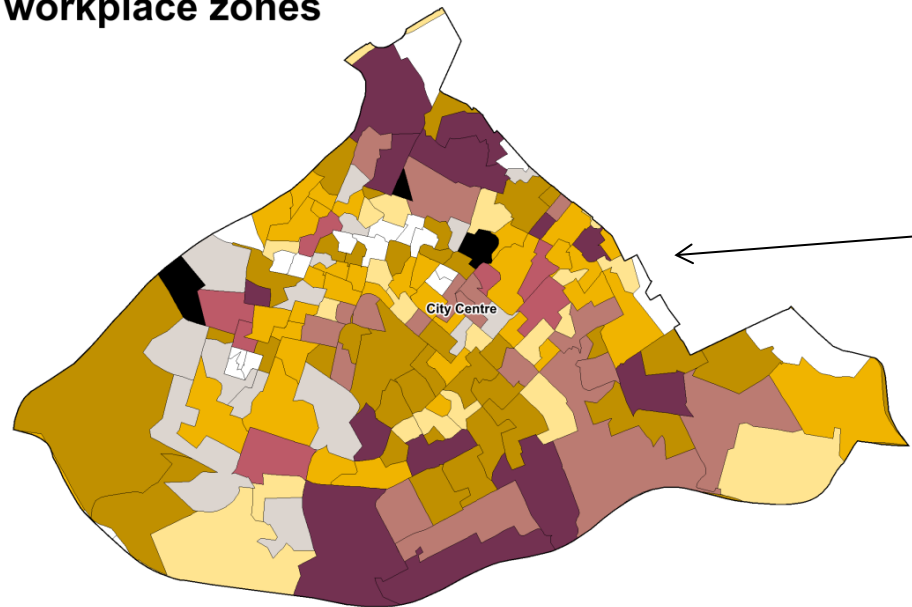
Travel less than 2km to work
in workplace zone



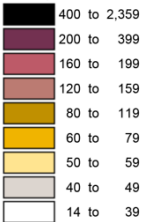
Source: Table WP702EW, 2011 Census, ONS.
Crown copyright

Crown copyright. All rights reserved. Manchester City Council 100019568 (2014)

**Travel
2km to less than
5km to work in
City Centre
workplace zones**



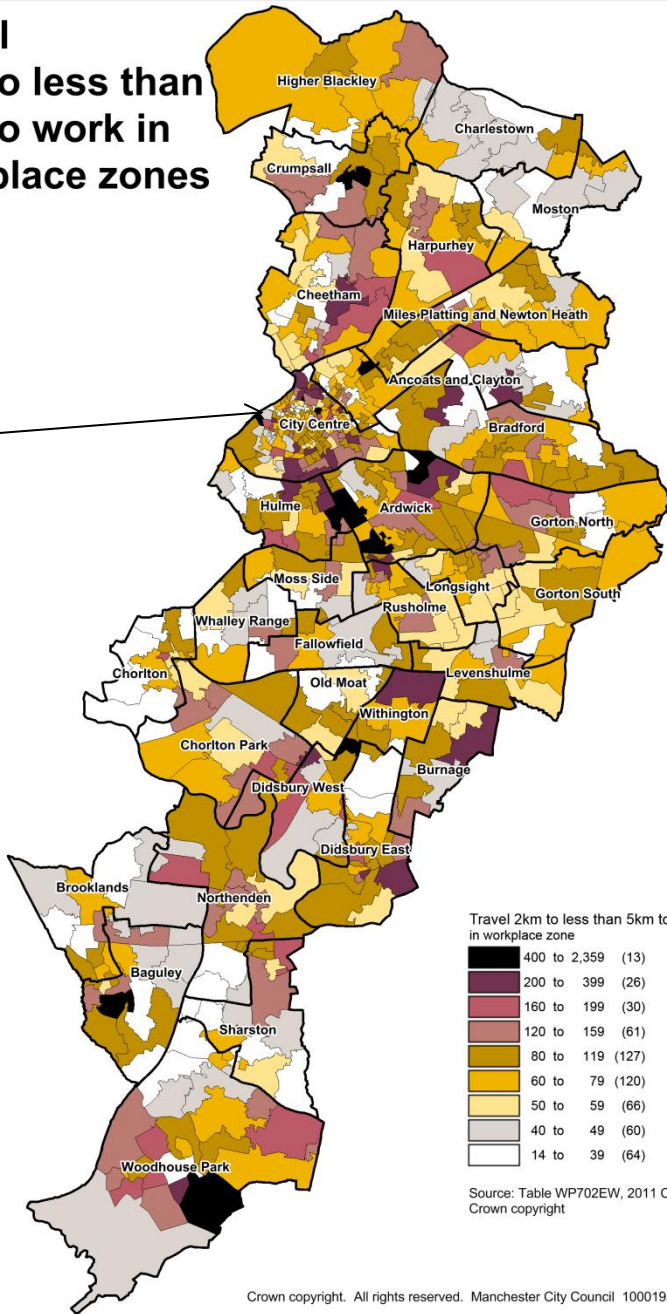
Travel 2km to less than 5km to work
in workplace zone



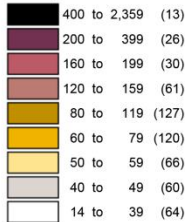
Source: Table WP702EW, 2011 Census, ONS.
Crown copyright

Crown copyright. All rights reserved. Manchester City Council 100019568 (2014)

**Travel
2km to less than
5km to work in
workplace zones**



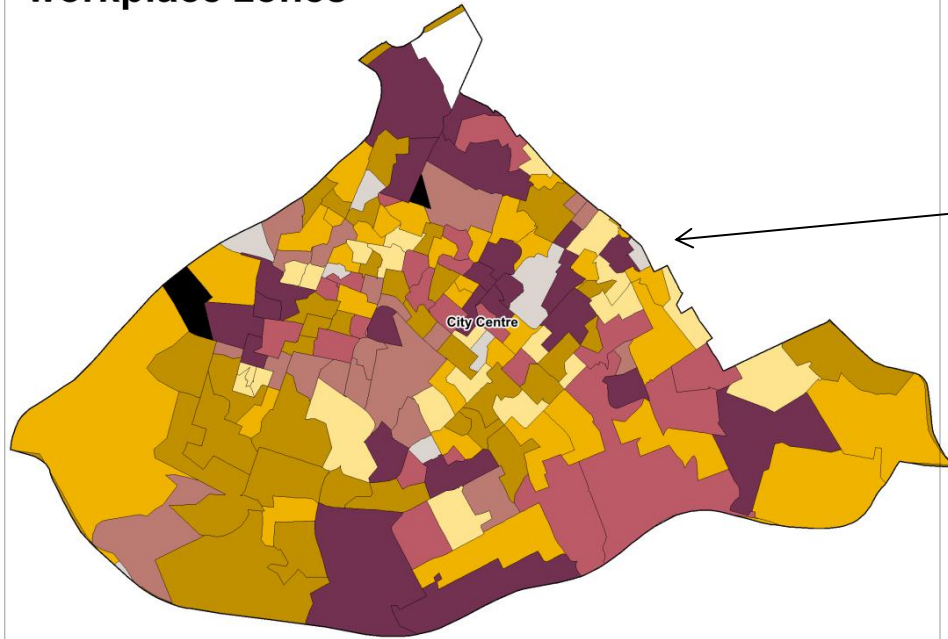
Travel 2km to less than 5km to work
in workplace zone



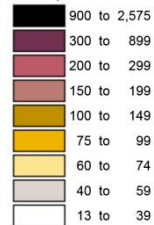
Source: Table WP702EW, 2011 Census, ONS.
Crown copyright

Crown copyright. All rights reserved. Manchester City Council 100019568 (2014)

Travel 5km to less than 10km to work in City Centre workplace zones



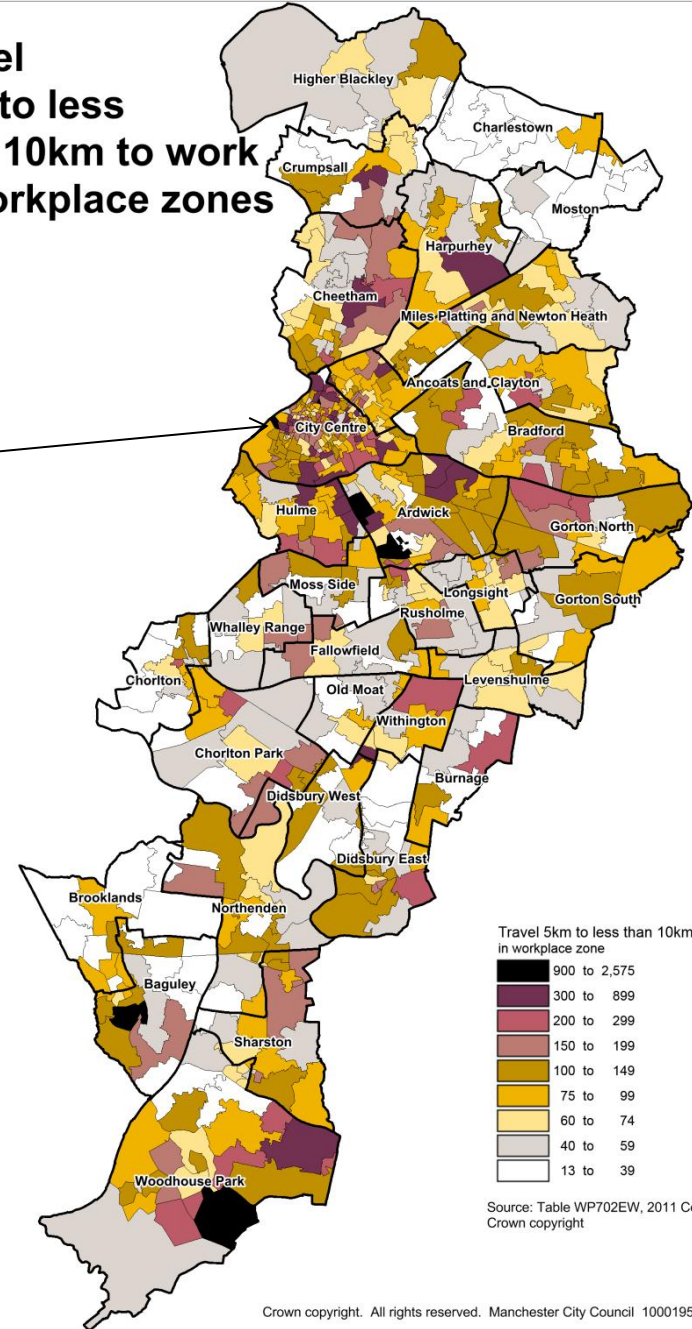
Travel 5km to less than 10km to work
in workplace zone



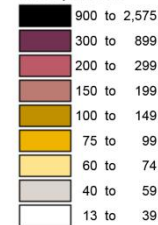
Source: Table WP702EW, 2011 Census, ONS.
Crown copyright

Crown copyright. All rights reserved. Manchester City Council 100019568 (2014)

Travel 5km to less than 10km to work in workplace zones



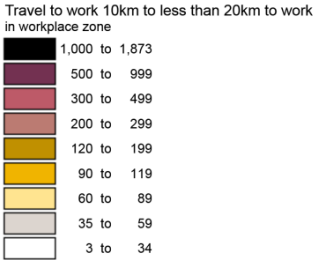
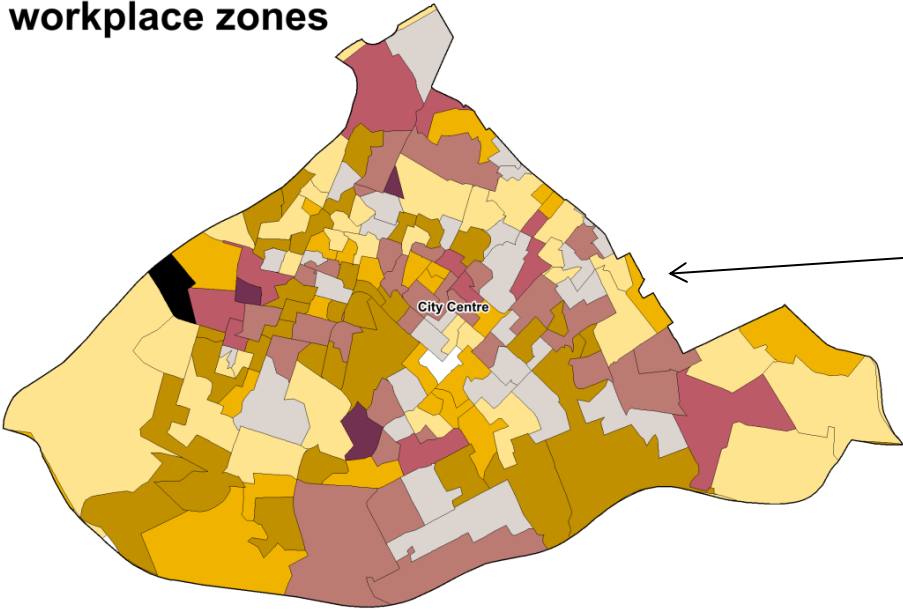
Travel 5km to less than 10km to work
in workplace zone



Source: Table WP702EW, 2011 Census, ONS.
Crown copyright

Crown copyright. All rights reserved. Manchester City Council 100019568 (2014)

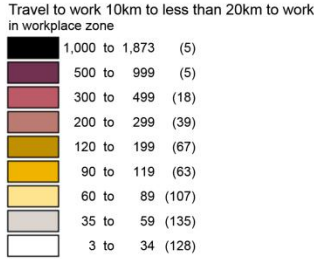
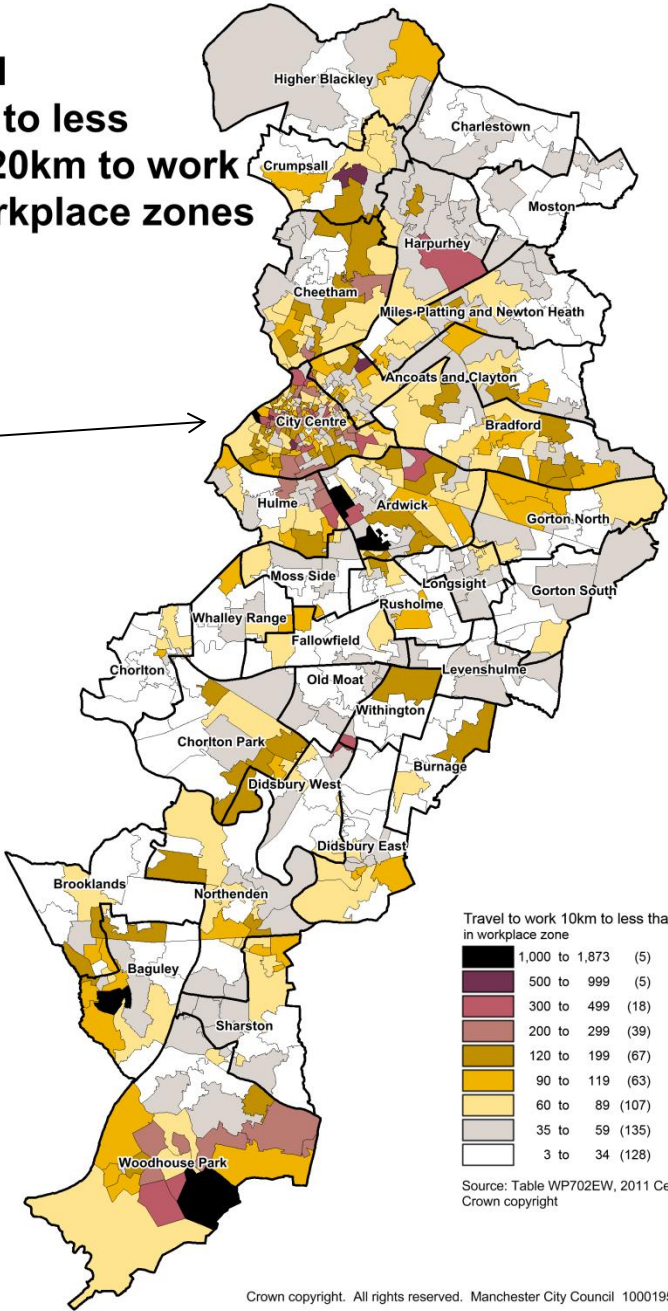
**Travel
10km to less
than 20km to work
in City Centre
workplace zones**



Source: Table WP702EW, 2011 Census, ONS.
Crown copyright

Crown copyright. All rights reserved. Manchester City Council 100019568 (2014)

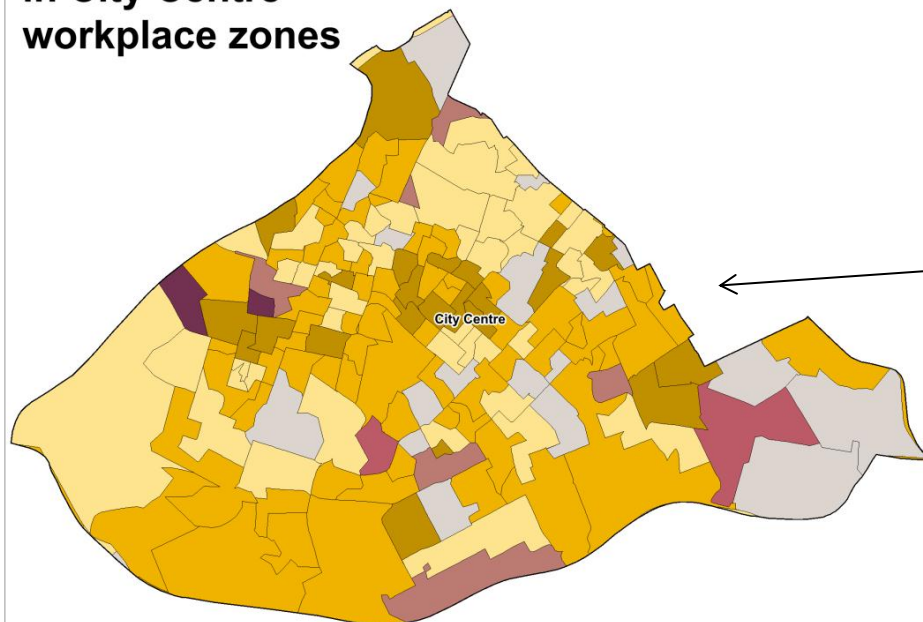
**Travel
10km to less
than 20km to work
in workplace zones**



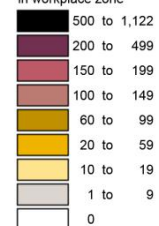
Source: Table WP702EW, 2011 Census, ONS.
Crown copyright

Crown copyright. All rights reserved. Manchester City Council 100019568 (2014)

Travel 20km to less than 30km to work in City Centre workplace zones



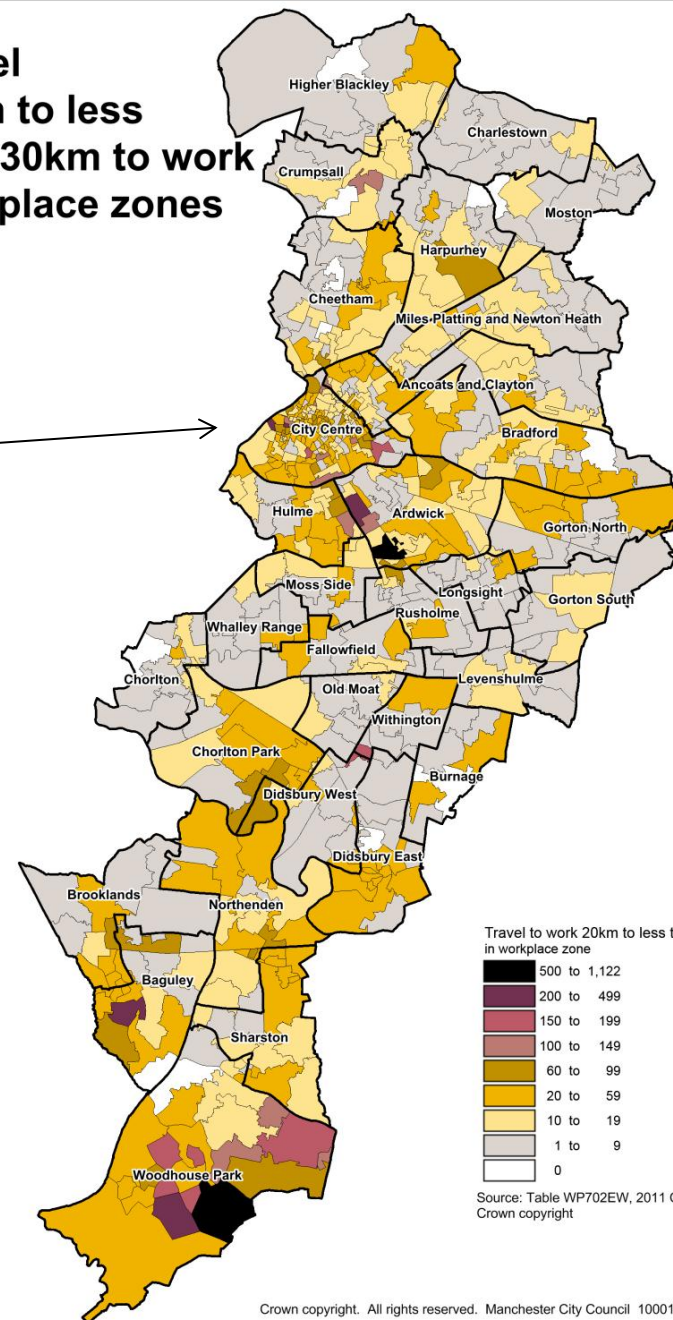
Travel to work 20km to less than 30km
in workplace zone



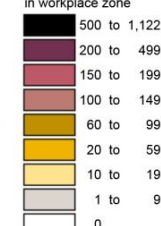
Source: Table WP702EW, 2011 Census, ONS.
Crown copyright

Crown copyright. All rights reserved. Manchester City Council 100019568 (2014)

Travel 20km to less than 30km to work workplace zones



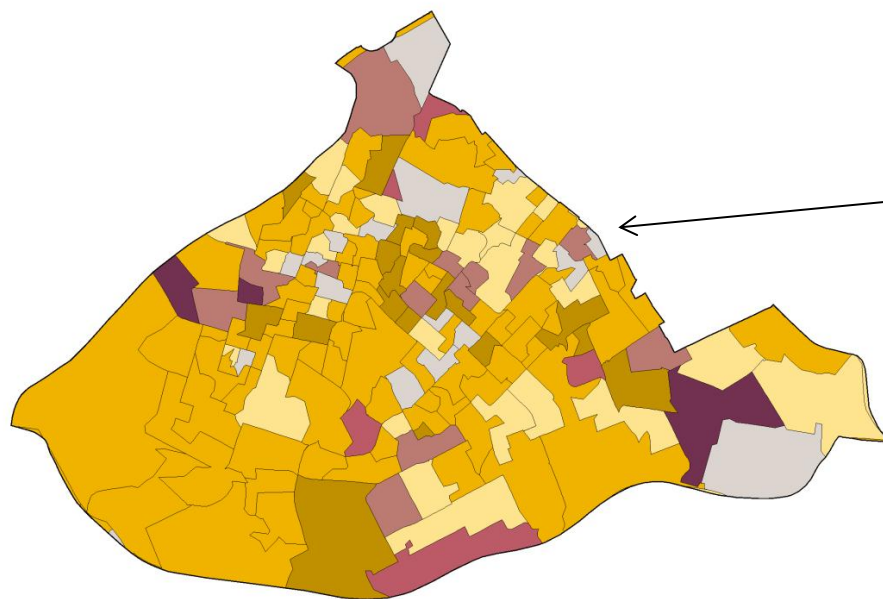
Travel to work 20km to less than 30km
in workplace zone



Source: Table WP702EW, 2011 Census, ONS.
Crown copyright

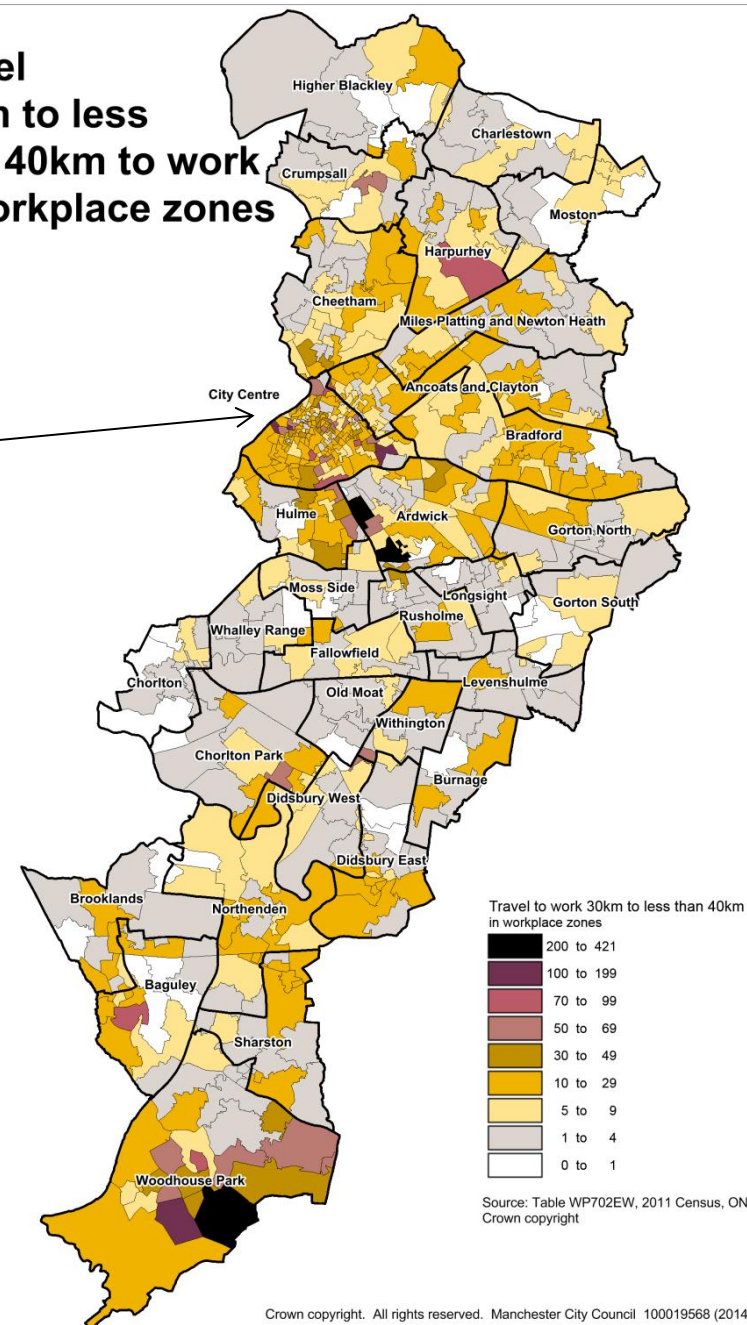
Crown copyright. All rights reserved. Manchester City Council 100019568 (2014)

Travel 30km to less than 40km to work in City Centre workplace zones



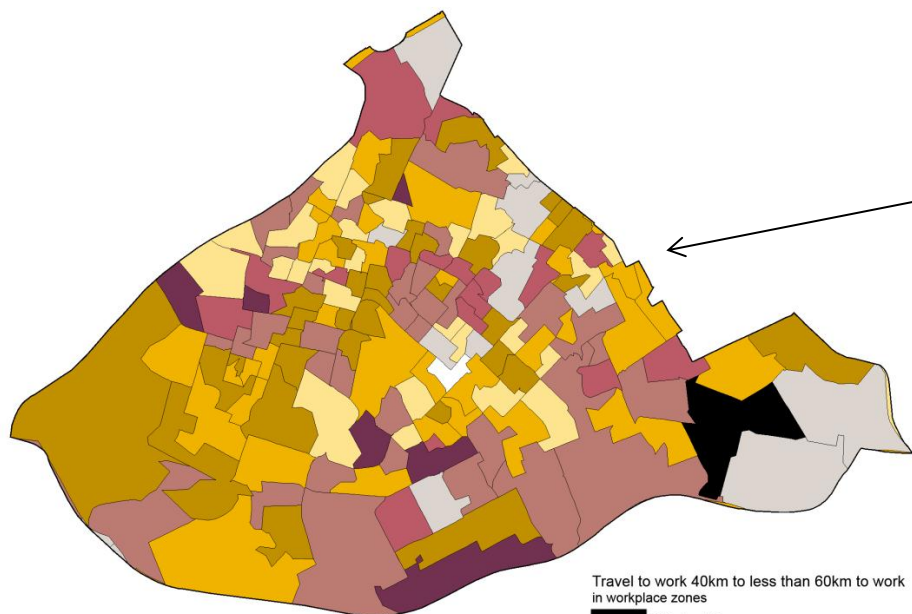
Crown copyright. All rights reserved. Manchester City Council 100019568 (2014)

Travel 30km to less than 40km to work in workplace zones

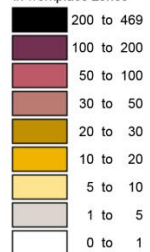


Crown copyright. All rights reserved. Manchester City Council 100019568 (2014)

Travel 30km to less than 40km to work in City Centre workplace zones



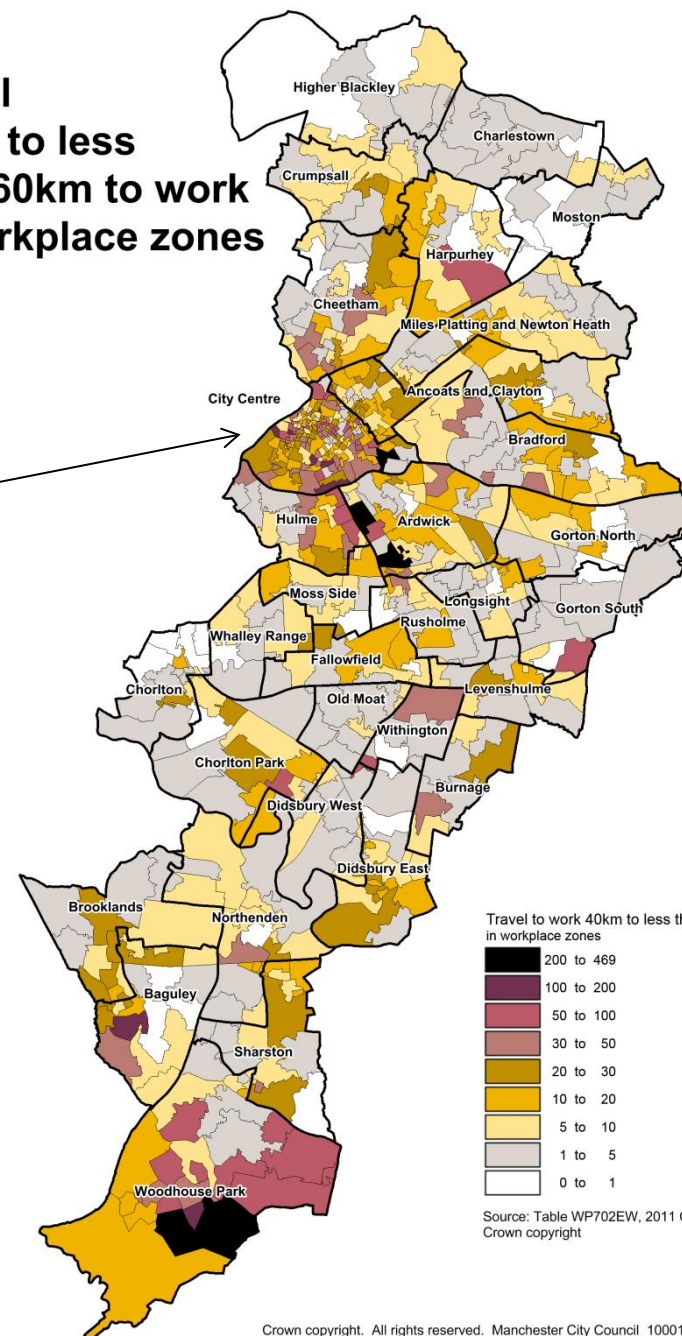
Travel to work 40km to less than 60km to work in workplace zones



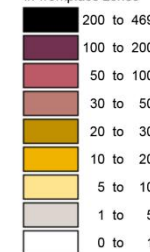
Source: Table WP702EW, 2011 Census, ONS.
Crown copyright

Crown copyright. All rights reserved. Manchester City Council 100019568 (2014)

Travel 40km to less than 60km to work in workplace zones



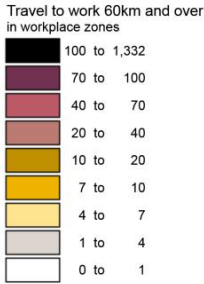
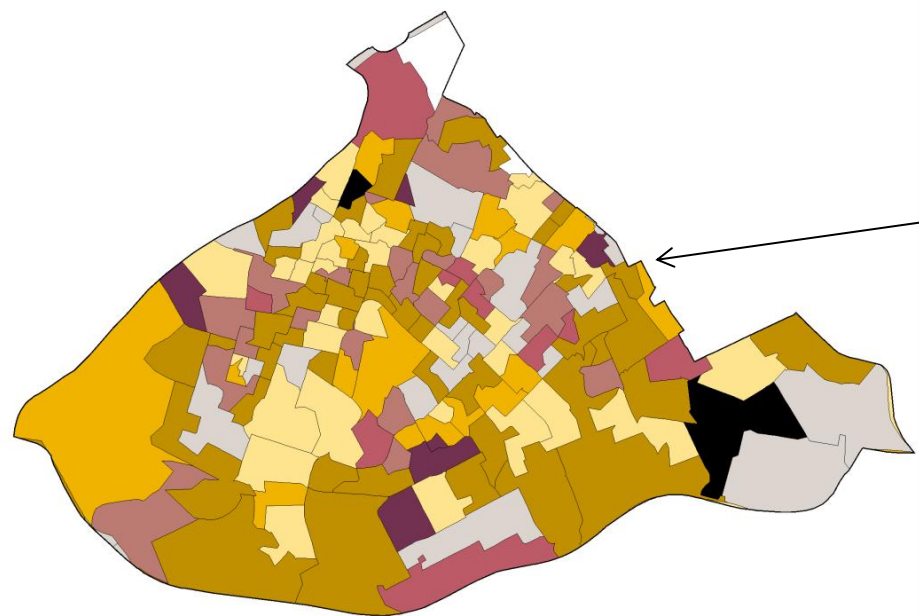
Travel to work 40km to less than 60km to work in workplace zones



Source: Table WP702EW, 2011 Census, ONS.
Crown copyright

Crown copyright. All rights reserved. Manchester City Council 100019568 (2014)

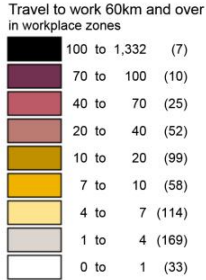
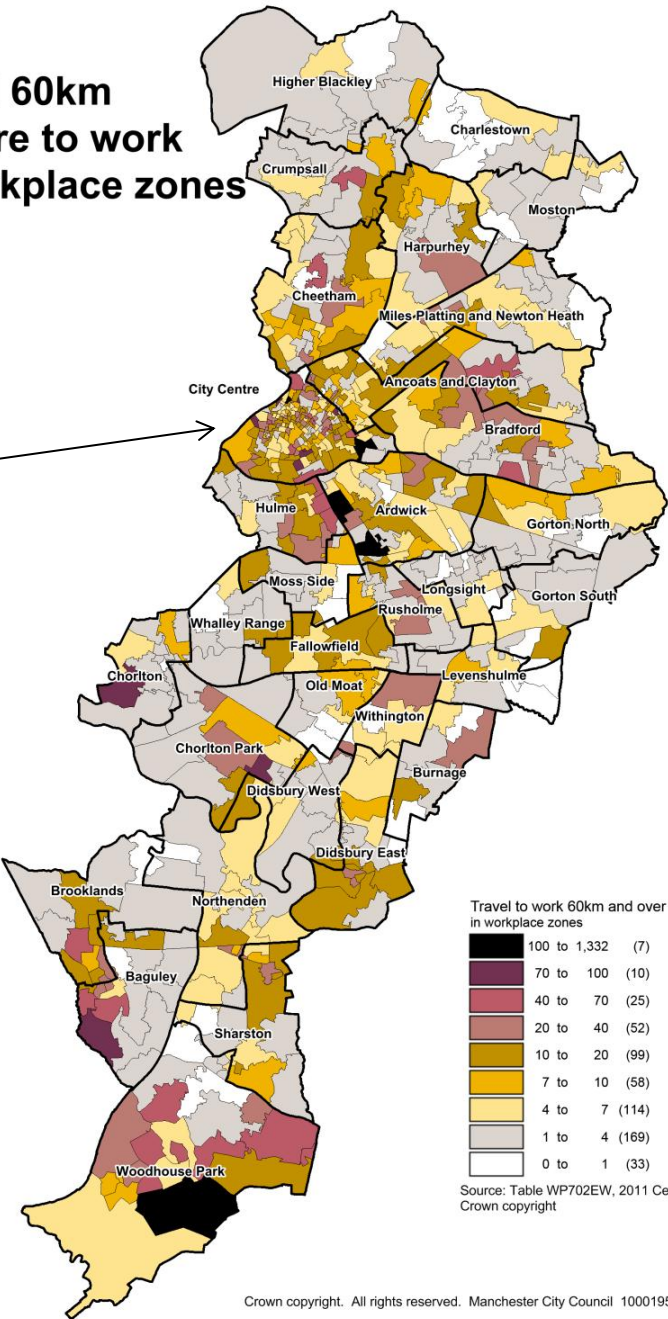
**Travel 60km or more
to work
in City Centre
workplace zones**



Source: Table WP702EW, 2011 Census, ONS.
Crown copyright

Crown copyright. All rights reserved. Manchester City Council 100019568 (2014)

**Travel 60km
or more to work
in workplace zones**

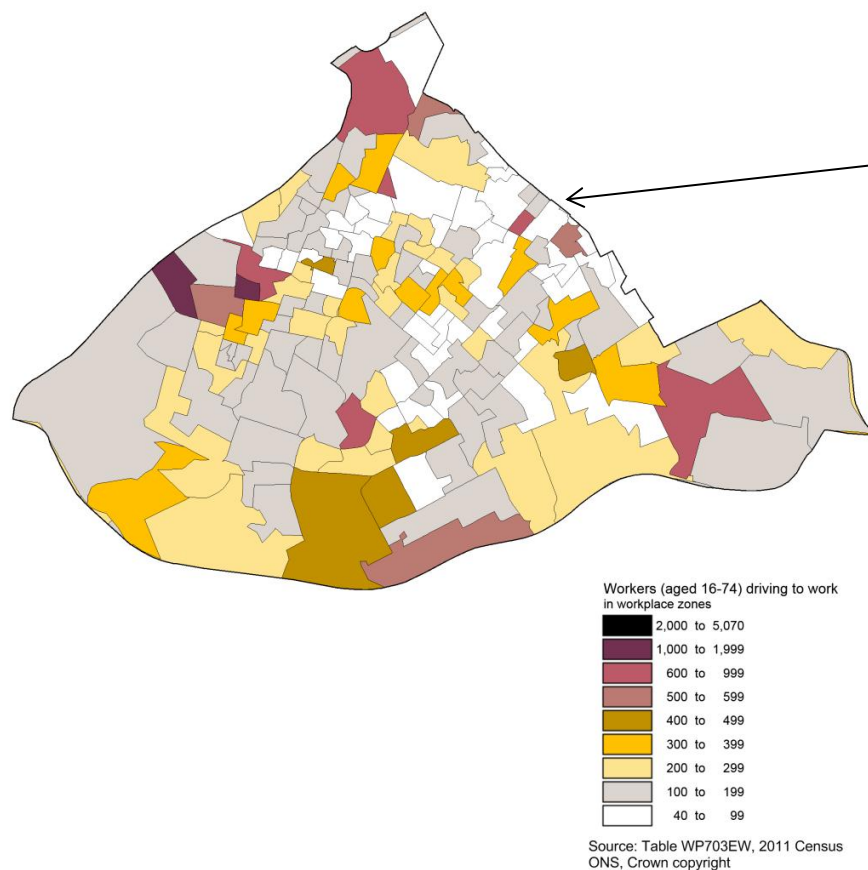


Source: Table WP702EW, 2011 Census, ONS.
Crown copyright

Crown copyright. All rights reserved. Manchester City Council 100019568 (2014)

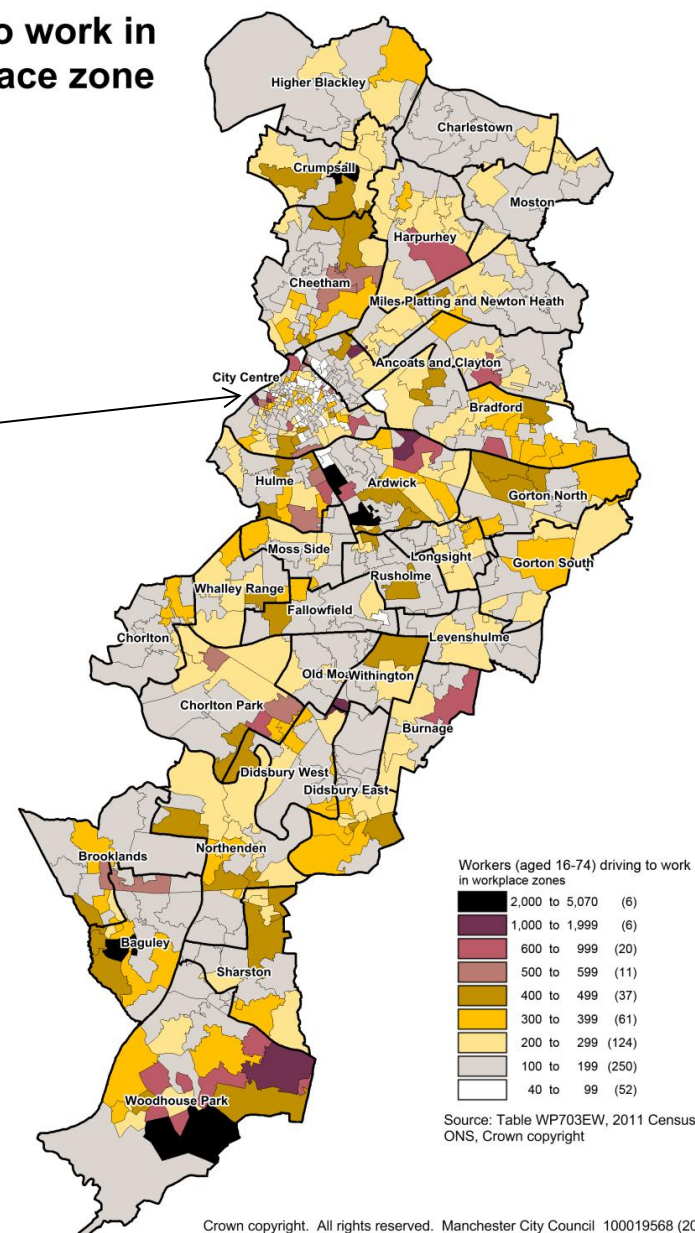
Method of travel to work in workplace zones

Drive to work in Manchester City Centre workplace zone



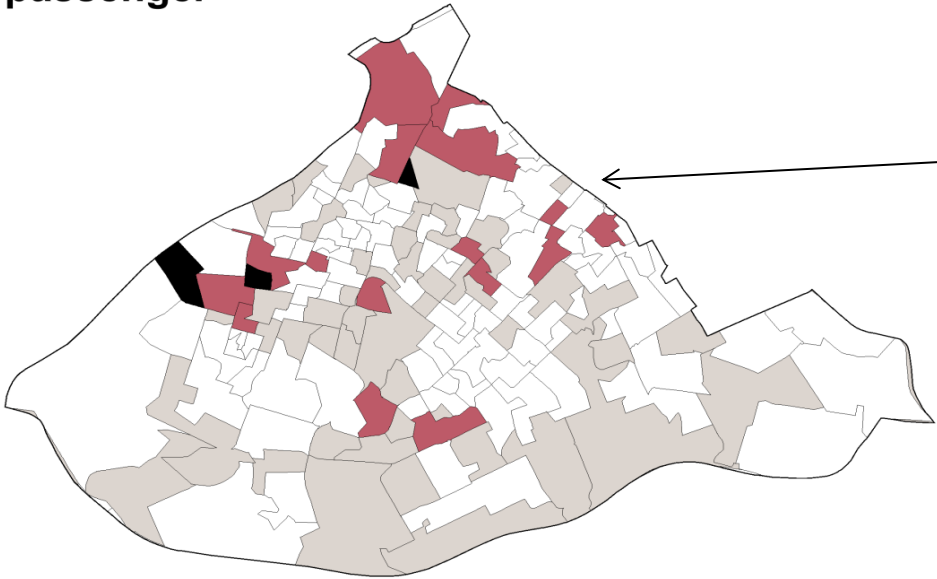
Crown copyright. All rights reserved. Manchester City Council 100019568 (2014)

Drive to work in workplace zone



Crown copyright. All rights reserved. Manchester City Council 100019568 (2014)

Travel to work in Manchester City Centre workplace zone as a car/van passenger



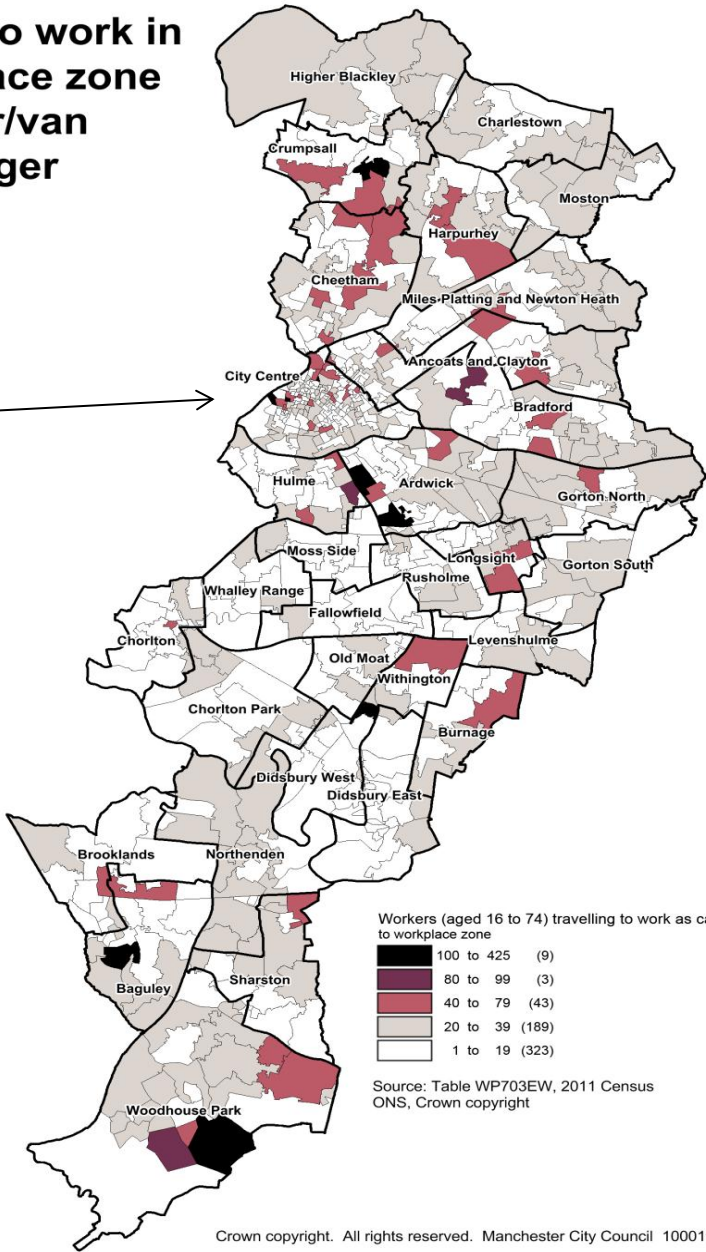
Workers (aged 16 to 74) travelling to work as car passenger to workplace zone

100 to 425
80 to 99
40 to 79
20 to 39
1 to 19

Source: Table WP703EW, 2011 Census
ONS, Crown copyright

Crown copyright. All rights reserved. Manchester City Council 100019568 (2014)

Travel to work in workplace zone as a car/van passenger



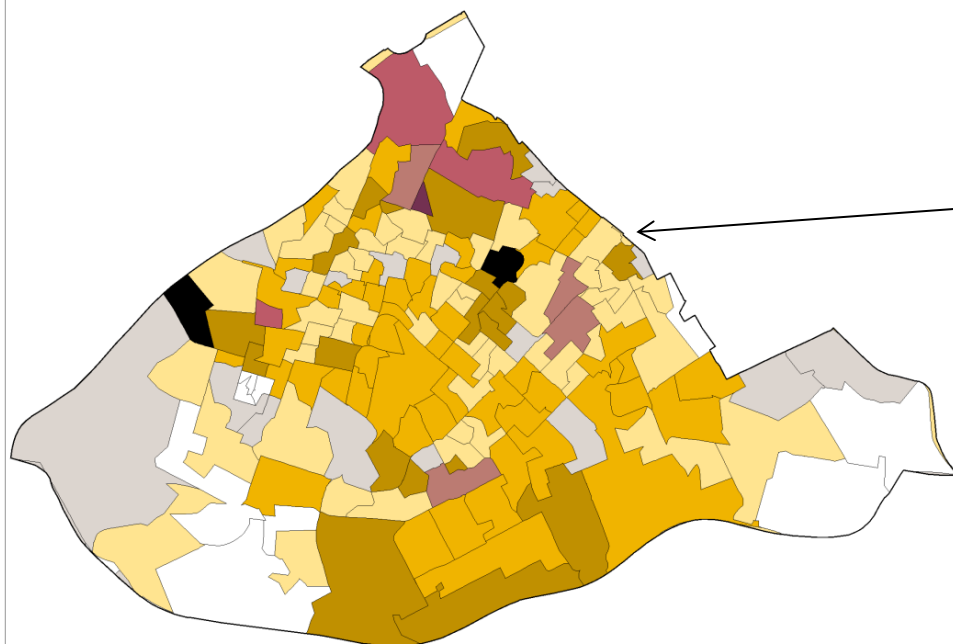
Workers (aged 16 to 74) travelling to work as car passenger to workplace zone

100 to 425	(9)
80 to 99	(3)
40 to 79	(43)
20 to 39	(189)
1 to 19	(323)

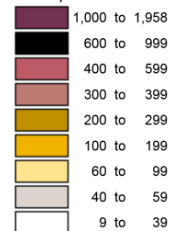
Source: Table WP703EW, 2011 Census
ONS, Crown copyright

Crown copyright. All rights reserved. Manchester City Council 100019568 (2014)

Travel to work in Manchester City Centre workplace zone by bus



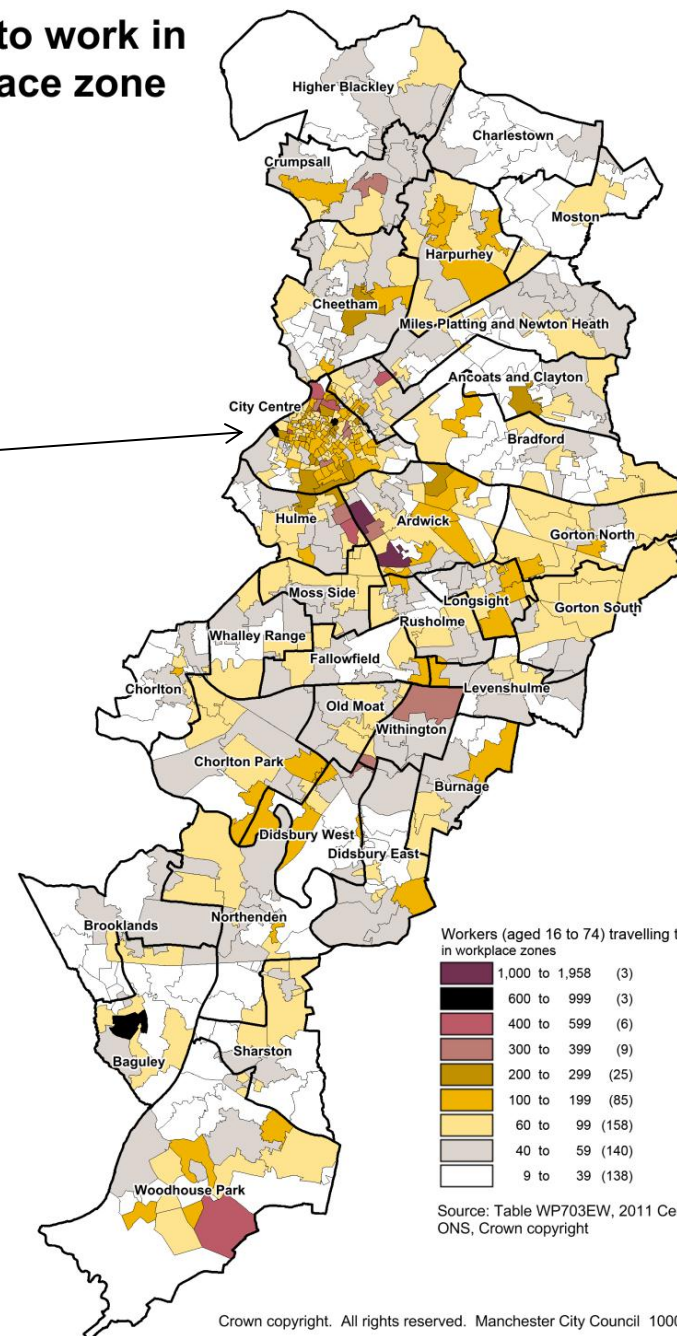
Workers (aged 16 to 74) travelling to work by bus in workplace zones



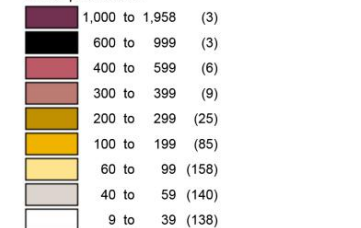
Source: Table WP703EW, 2011 Census
ONS, Crown copyright

Crown copyright. All rights reserved. Manchester City Council 100019568 (2014)

Travel to work in workplace zone by bus



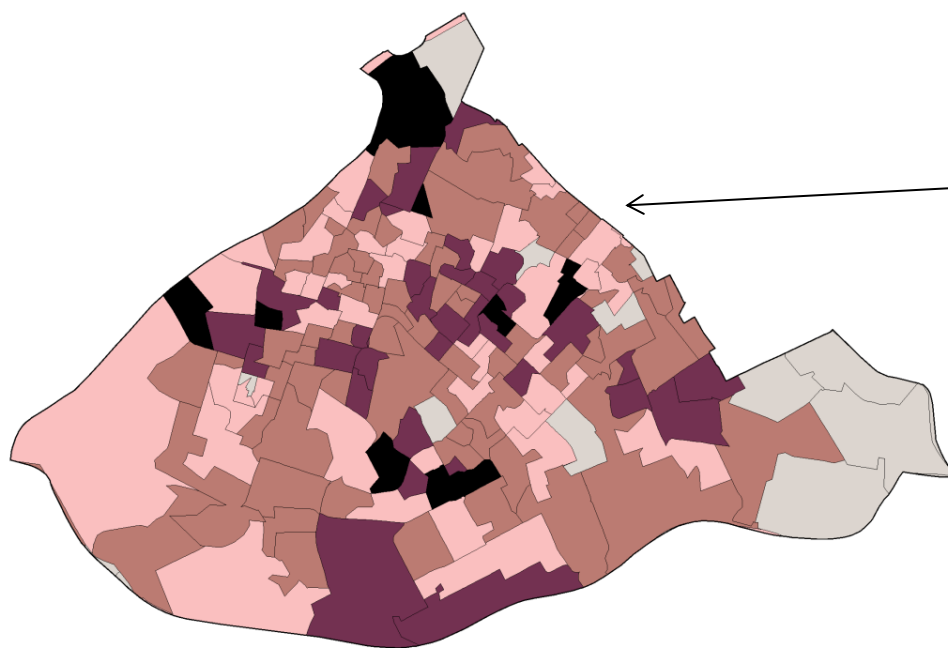
Workers (aged 16 to 74) travelling to work by bus in workplace zones



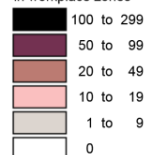
Source: Table WP703EW, 2011 Census
ONS, Crown copyright

Crown copyright. All rights reserved. Manchester City Council 100019568 (2014)

Travel to work in Manchester City Centre workplace zone by tram



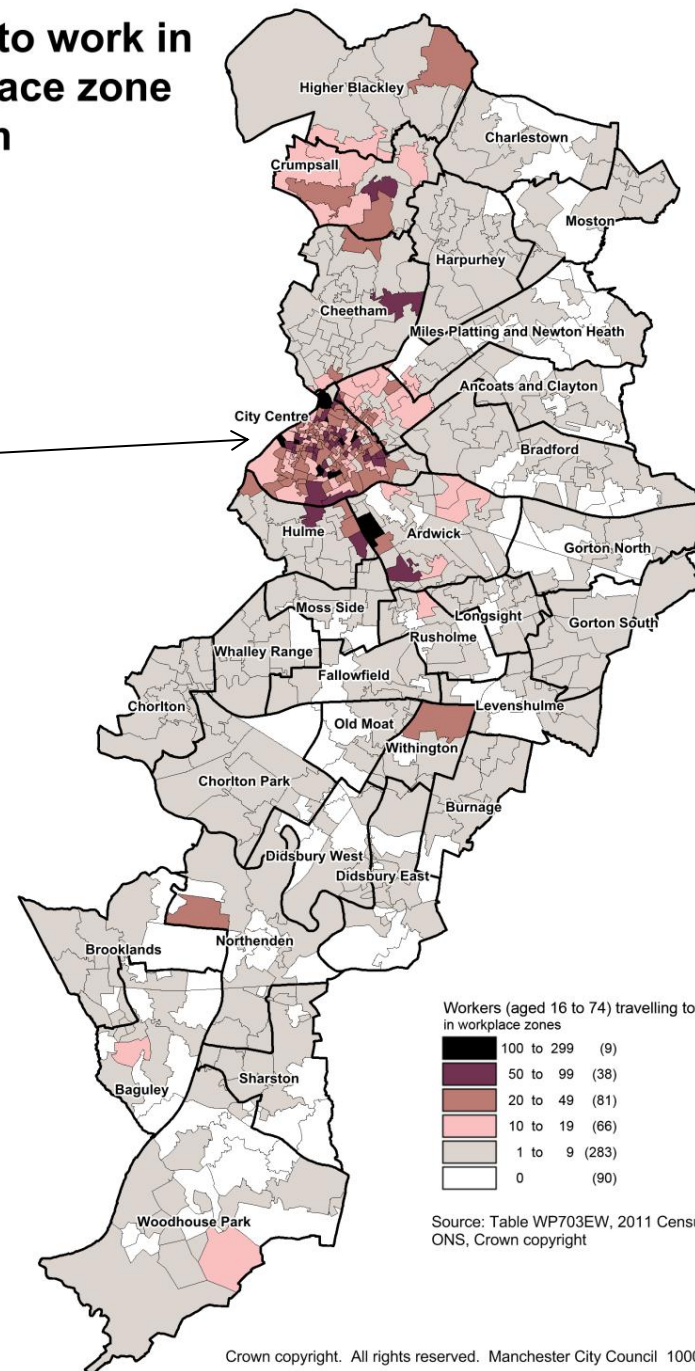
Workers (aged 16 to 74) travelling to work by tram in workplace zones



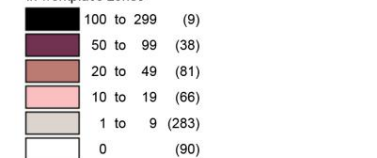
Source: Table WP703EW, 2011 Census
ONS, Crown copyright

Crown copyright. All rights reserved. Manchester City Council 100019568 (2014)

Travel to work in workplace zone by tram



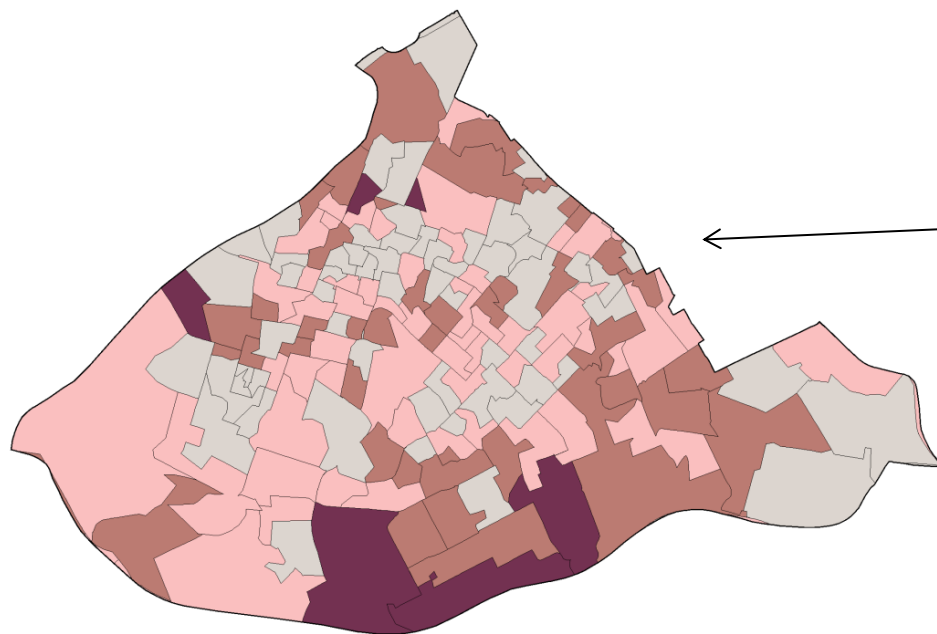
Workers (aged 16 to 74) travelling to work by tram in workplace zones



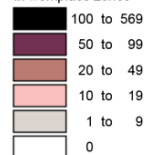
Source: Table WP703EW, 2011 Census
ONS, Crown copyright

Crown copyright. All rights reserved. Manchester City Council 100019568 (2014)

Travel to work in Manchester City Centre workplace zone by bicycle



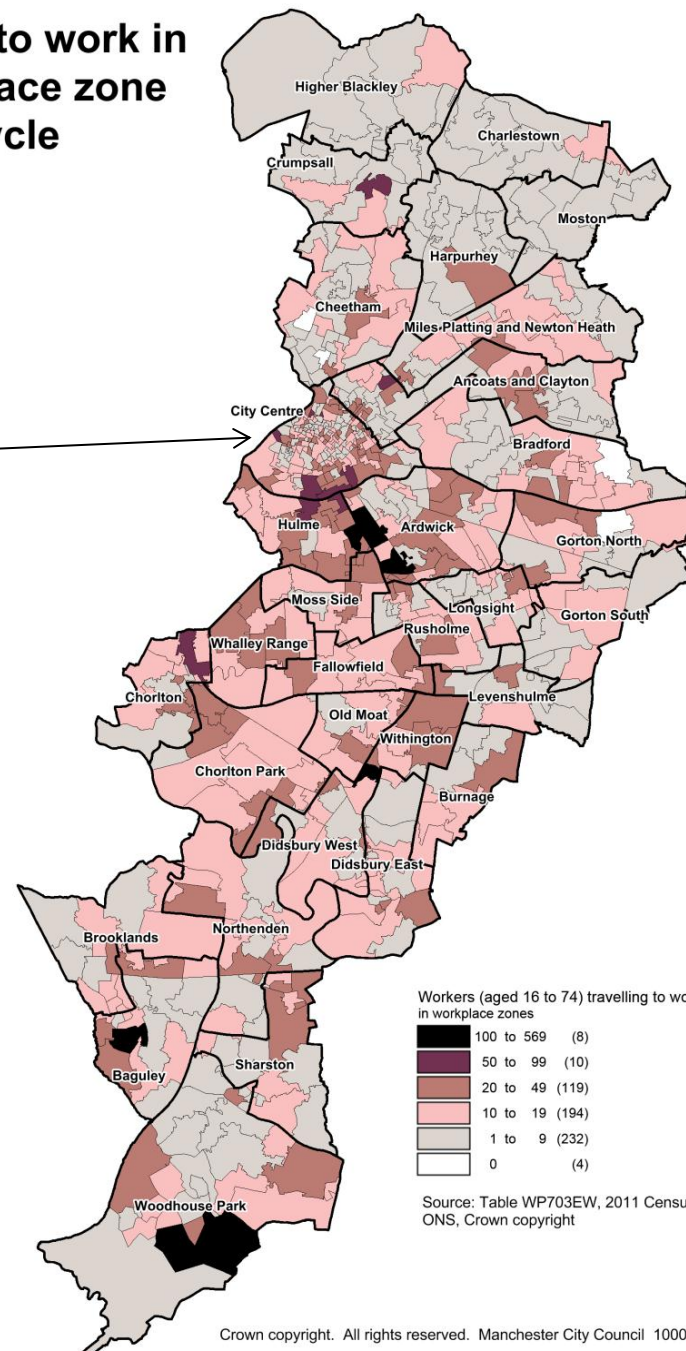
Workers (aged 16 to 74) travelling to work by bicycle in workplace zones



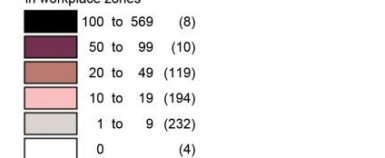
Source: Table WP703EW, 2011 Census
ONS, Crown copyright

Crown copyright. All rights reserved. Manchester City Council 100019568 (2014)

Travel to work in workplace zone by bicycle



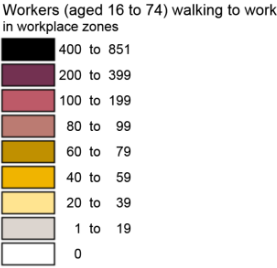
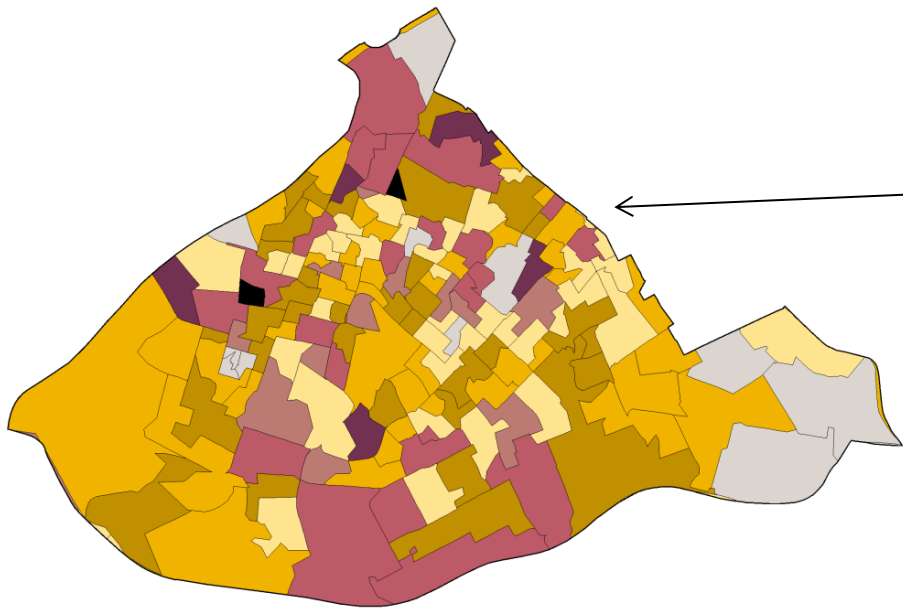
Workers (aged 16 to 74) travelling to work by bicycle in workplace zones



Source: Table WP703EW, 2011 Census
ONS, Crown copyright

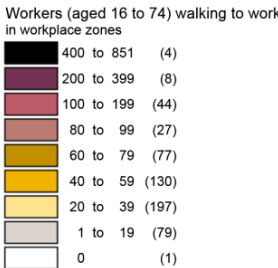
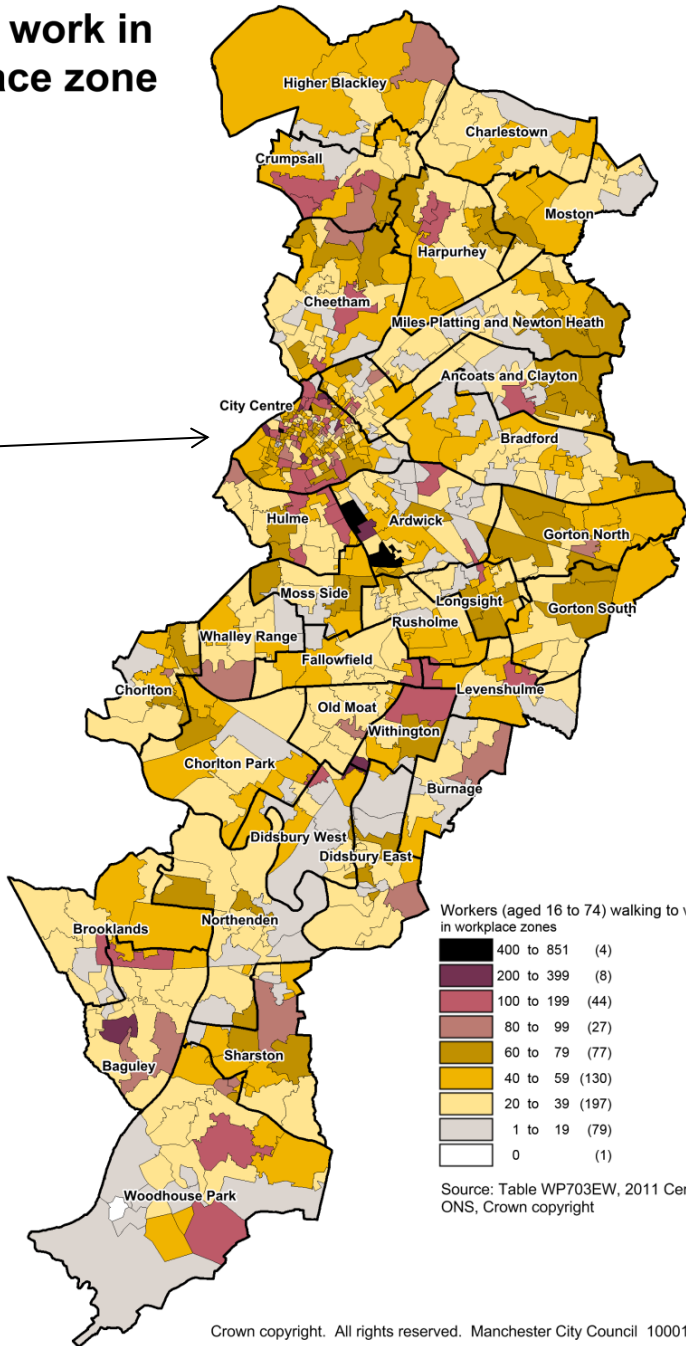
Crown copyright. All rights reserved. Manchester City Council 100019568 (2014)

Walk to work in Manchester City Centre workplace zone



Source: Table WP703EW, 2011 Census
ONS, Crown copyright

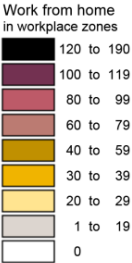
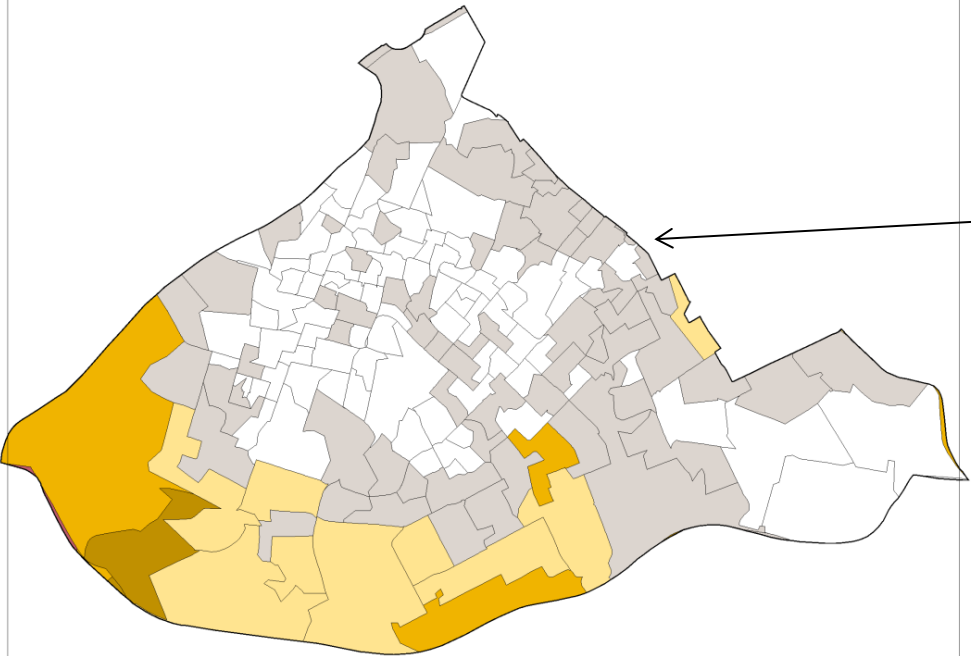
Walk to work in workplace zone



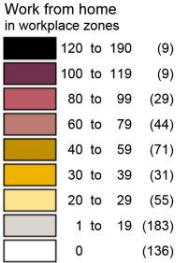
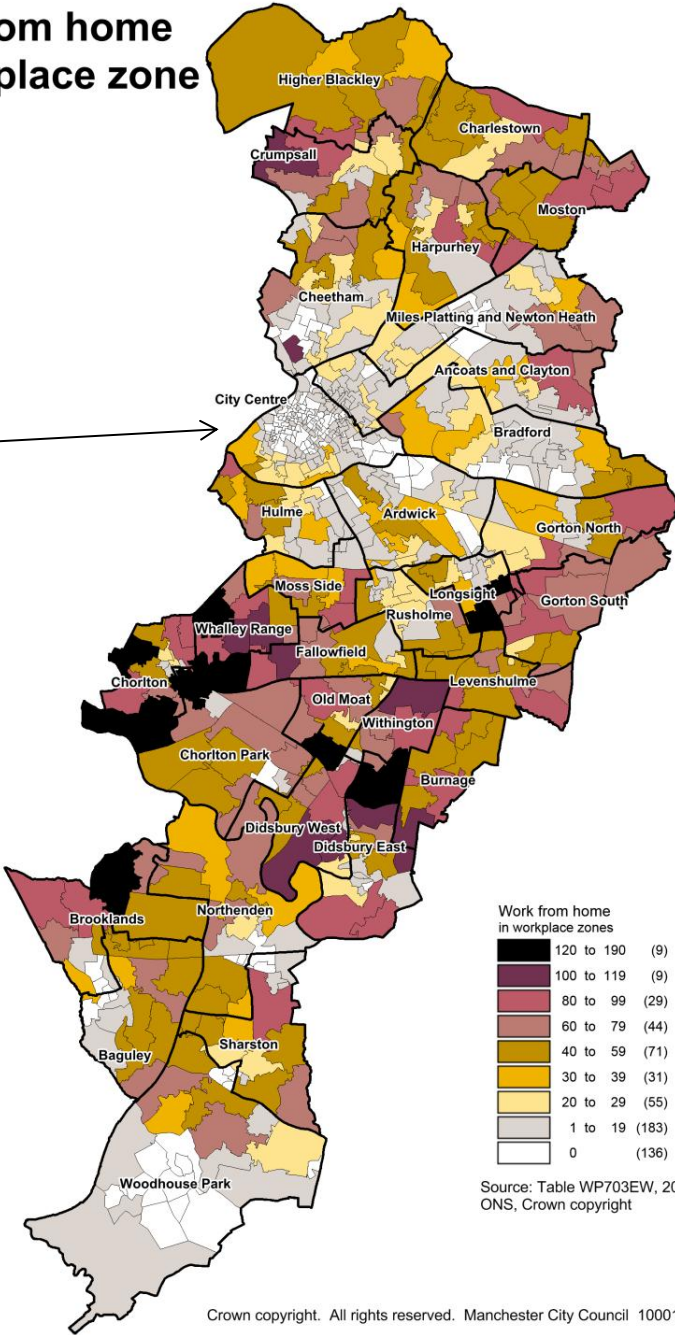
Source: Table WP703EW, 2011 Census
ONS, Crown copyright

Work from home in Manchester City Centre in workplace zone

Work from home in workplace zone



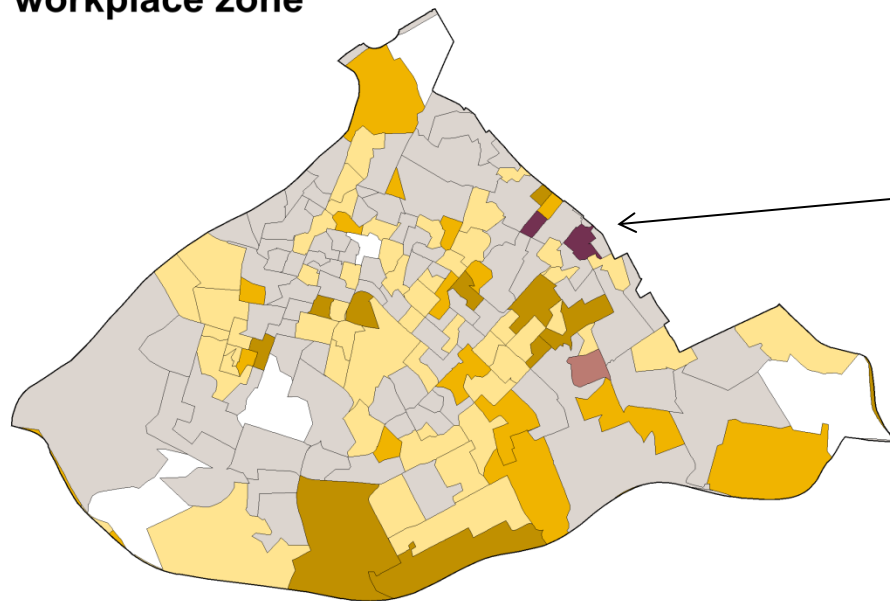
Source: Table WP703EW, 2011 Census
ONS, Crown copyright



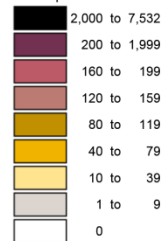
Source: Table WP703EW, 2011 Census
ONS, Crown copyright

Industry of workers employed in workplace zones

**Number
working in
human health
and social care
by City Centre
workplace zone**



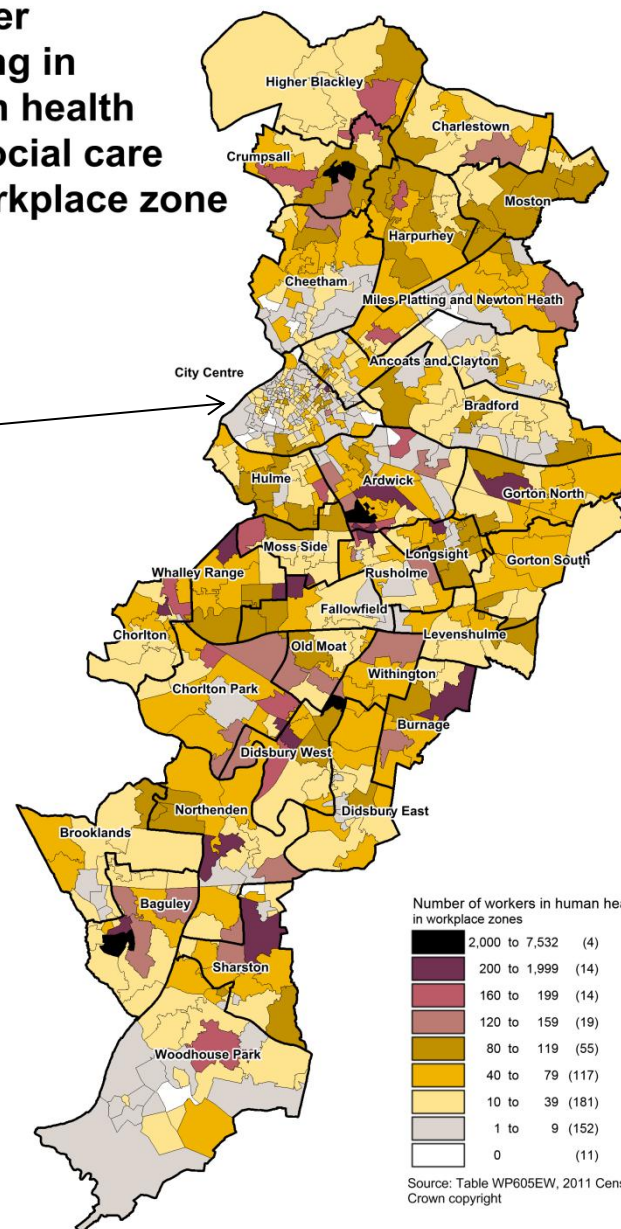
Number of workers in human health and social work
in workplace zones



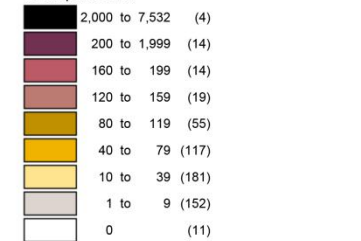
Source: Table WP605EW, 2011 Census, ONS
Crown copyright

Crown copyright. All rights reserved. Manchester City Council 100019568 (2014)

**Number
working in
human health
and social care
by workplace zone**



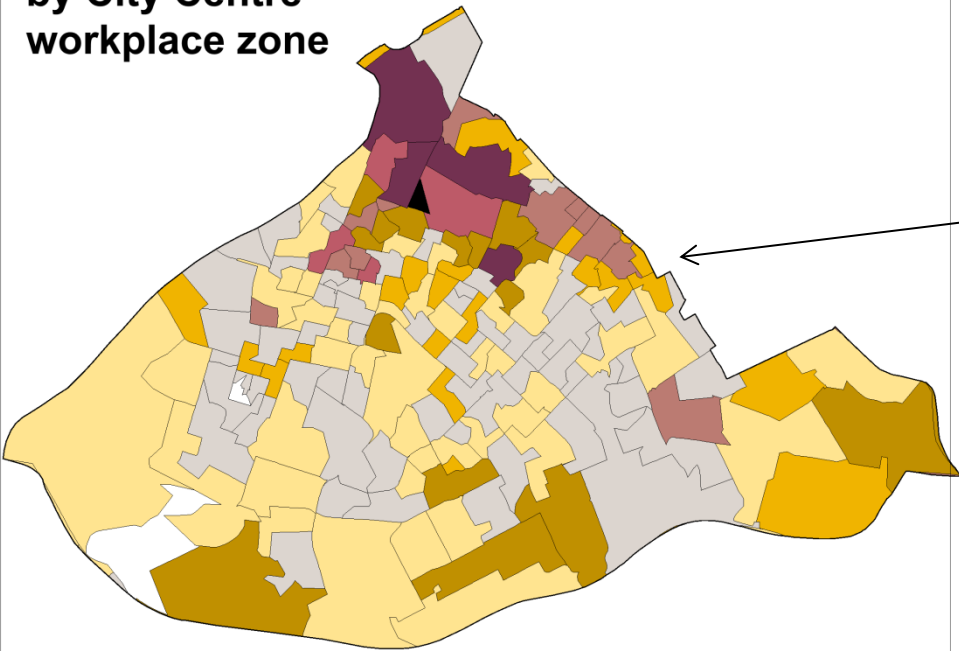
Number of workers in human health and social work
in workplace zones



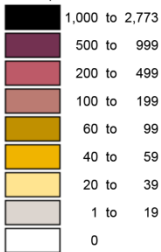
Source: Table WP605EW, 2011 Census, ONS
Crown copyright

Crown copyright. All rights reserved. Manchester City Council 100019568 (2014)

**Number
working in
wholesale
and retail
by City Centre
workplace zone**



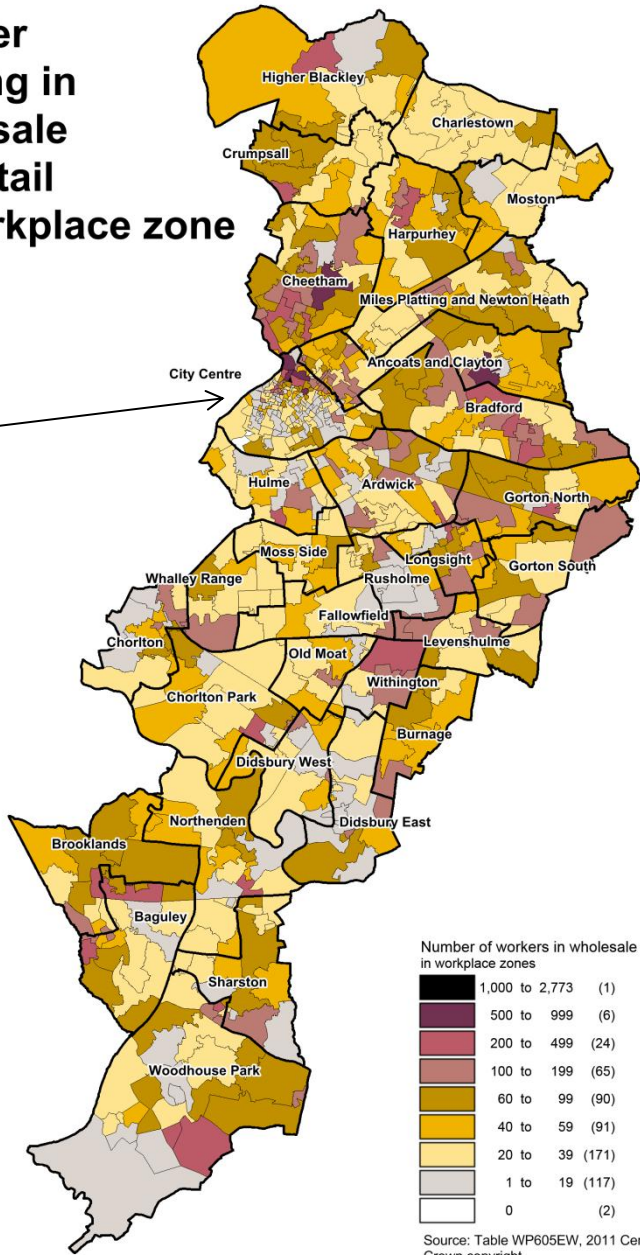
Number of workers in wholesale and retail
in workplace zones



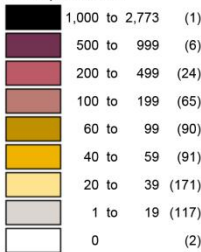
Source: Table WP605EW, 2011 Census, ONS
Crown copyright

Crown copyright. All rights reserved. Manchester City Council 100019568 (2014)

**Number
working in
wholesale
and retail
by workplace zone**



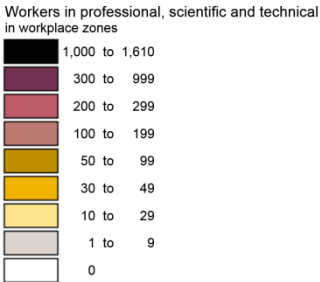
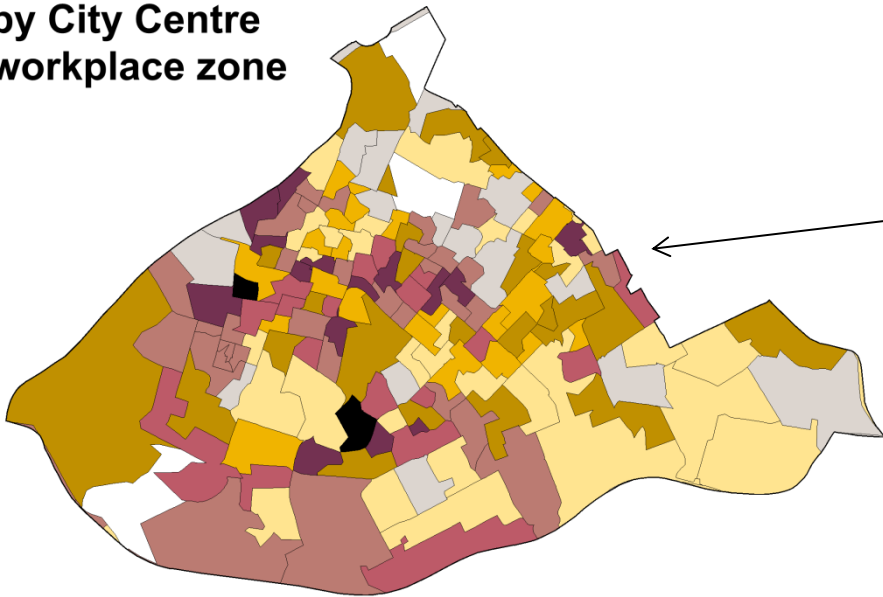
Number of workers in wholesale and retail
in workplace zones



Source: Table WP605EW, 2011 Census, ONS
Crown copyright

Crown copyright. All rights reserved. Manchester City Council 100019568 (2014)

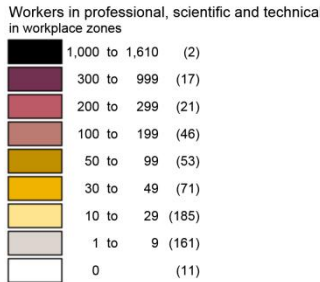
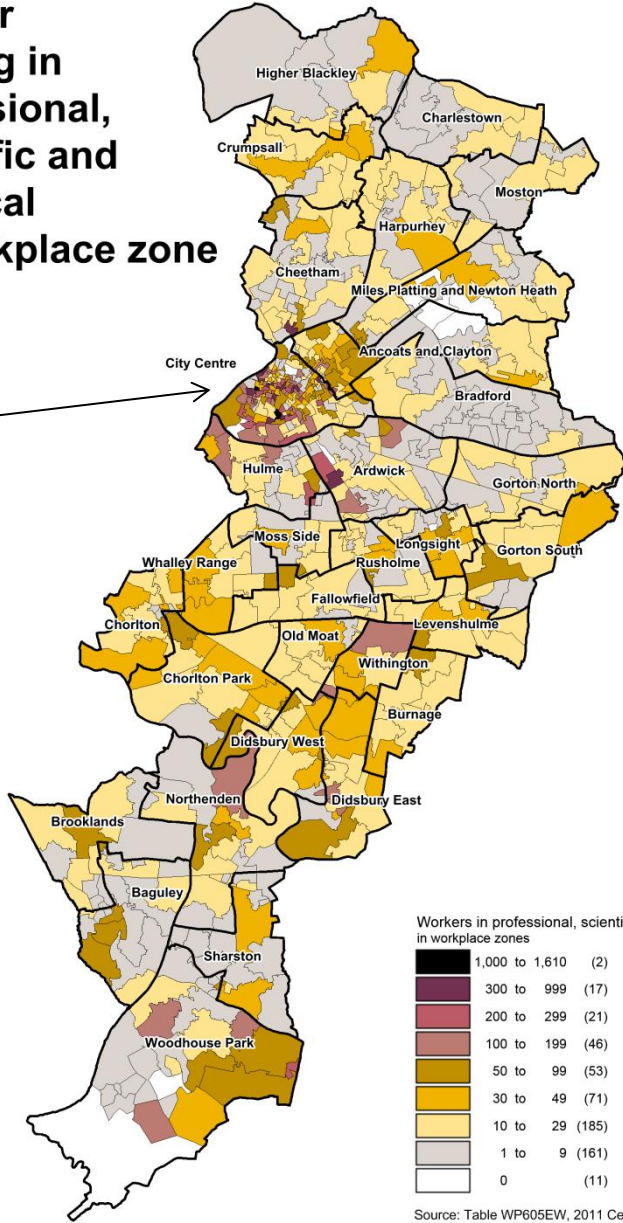
**Number
working in
professional,
scientific and
technical
by City Centre
workplace zone**



Source: Table WP605EW, 2011 Census, ONS
Crown copyright

Crown copyright. All rights reserved. Manchester City Council 100019568 (2014)

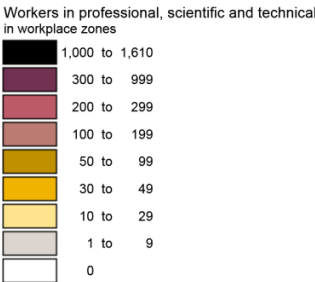
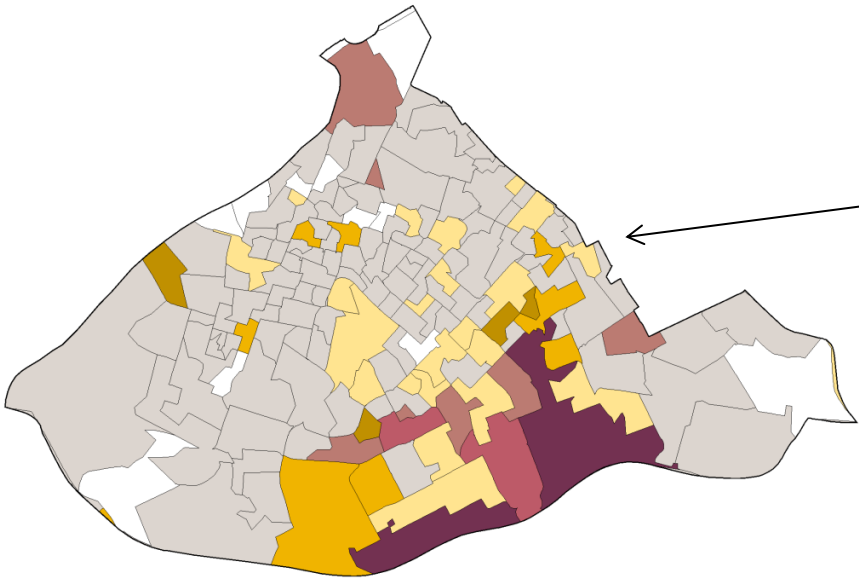
**Number
working in
professional,
scientific and
technical
by workplace zone**



Source: Table WP605EW, 2011 Census, ONS
Crown copyright

Crown copyright. All rights reserved. Manchester City Council 100019568 (2014)

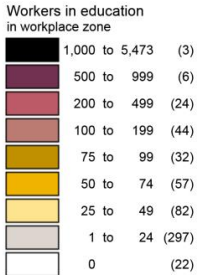
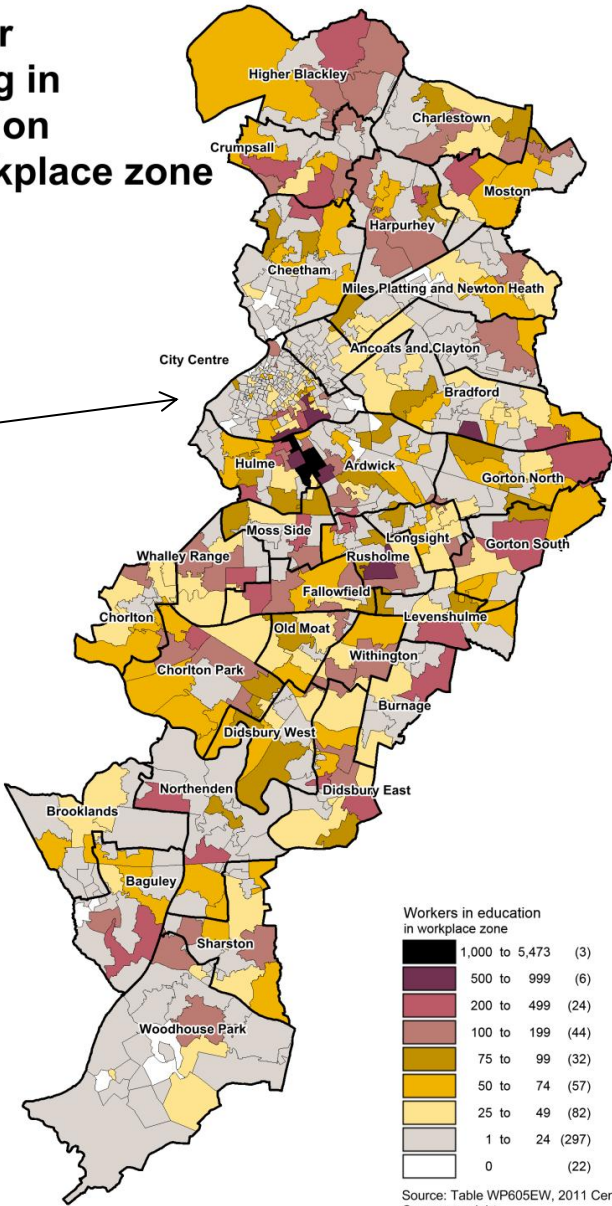
Number
working in
education
by City Centre
workplace zone



Source: Table WP605EW, 2011 Census, ONS
Crown copyright

Crown copyright. All rights reserved. Manchester City Council 100019568 (2014)

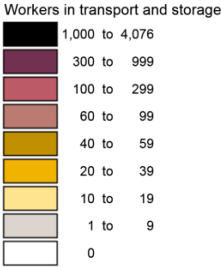
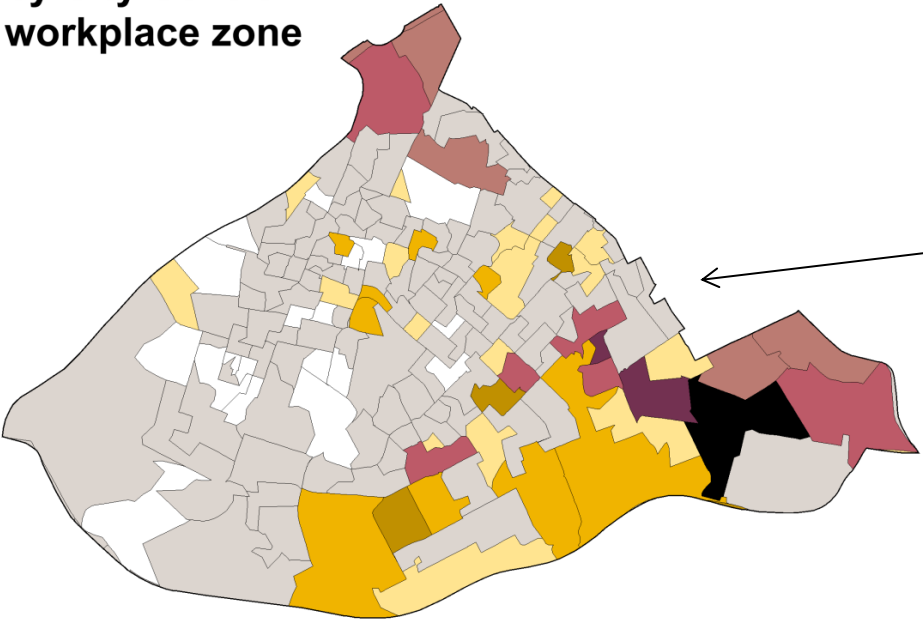
Number
working in
education
by workplace zone



Source: Table WP605EW, 2011 Census, ONS
Crown copyright

Crown copyright. All rights reserved. Manchester City Council 100019568 (2014)

**Number
working in
transport and
storage
by City Centre
workplace zone**

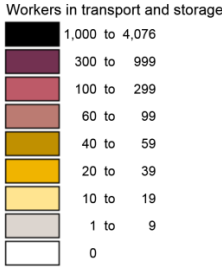
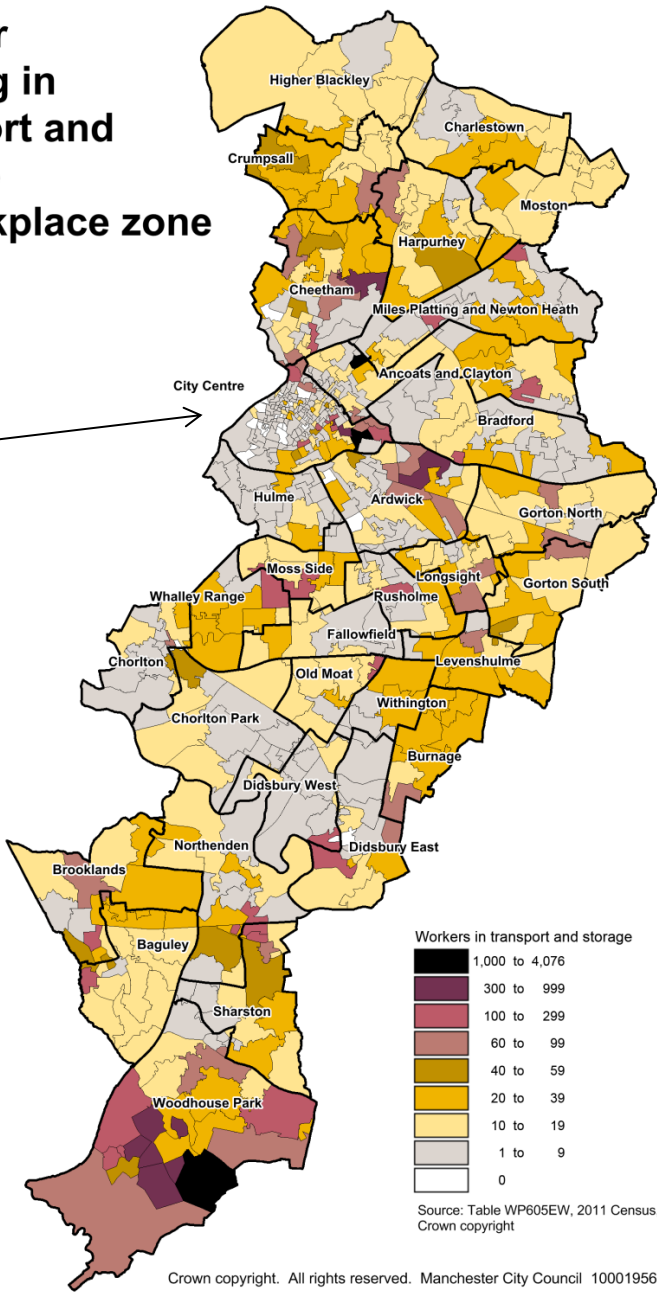


Source: Table WP605EW, 2011 Census, ONS
Crown copyright

Crown copyright. All rights reserved. Manchester City Council 100019568 (2014)

[Industry by WZ.wor]

**Number
working in
transport and
storage
by workplace zone**

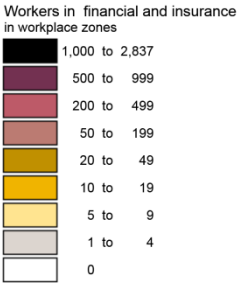
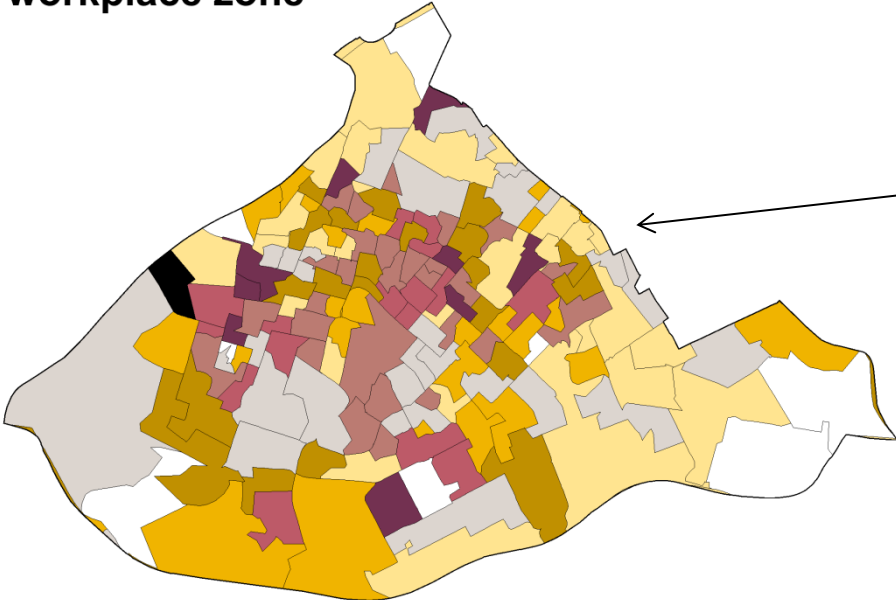


Source: Table WP605EW, 2011 Census, ONS
Crown copyright

Crown copyright. All rights reserved. Manchester City Council 100019568 (2014)

[Industry by WZ.wor]

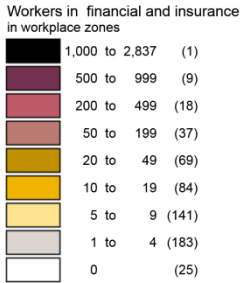
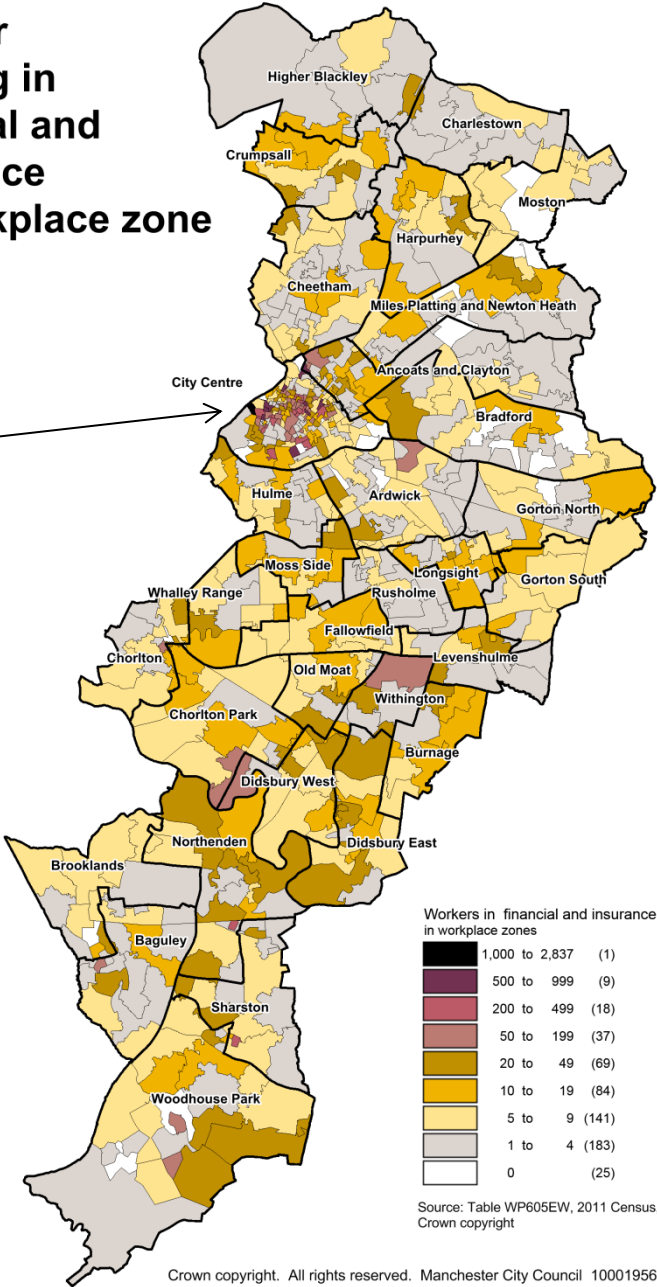
**Number
working in
financial and
insurance
by City Centre
workplace zone**



Source: Table WP605EW, 2011 Census, ONS
Crown copyright

Crown copyright. All rights reserved. Manchester City Council 100019568 (2014)

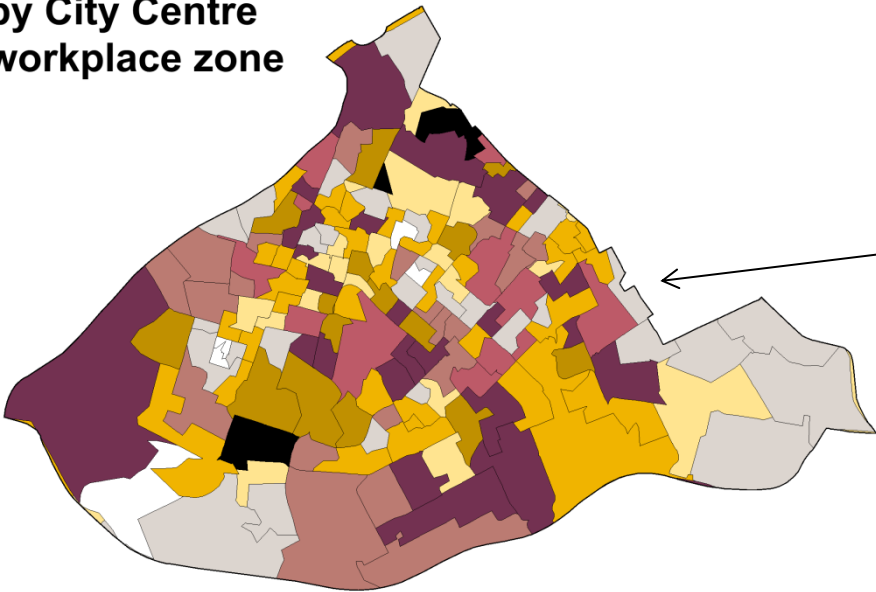
**Number
working in
financial and
insurance
by workplace zone**



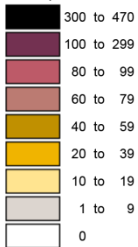
Source: Table WP605EW, 2011 Census, ONS
Crown copyright

Crown copyright. All rights reserved. Manchester City Council 100019568 (2014)

**Number
working in
accommodation
and food
by City Centre
workplace zone**



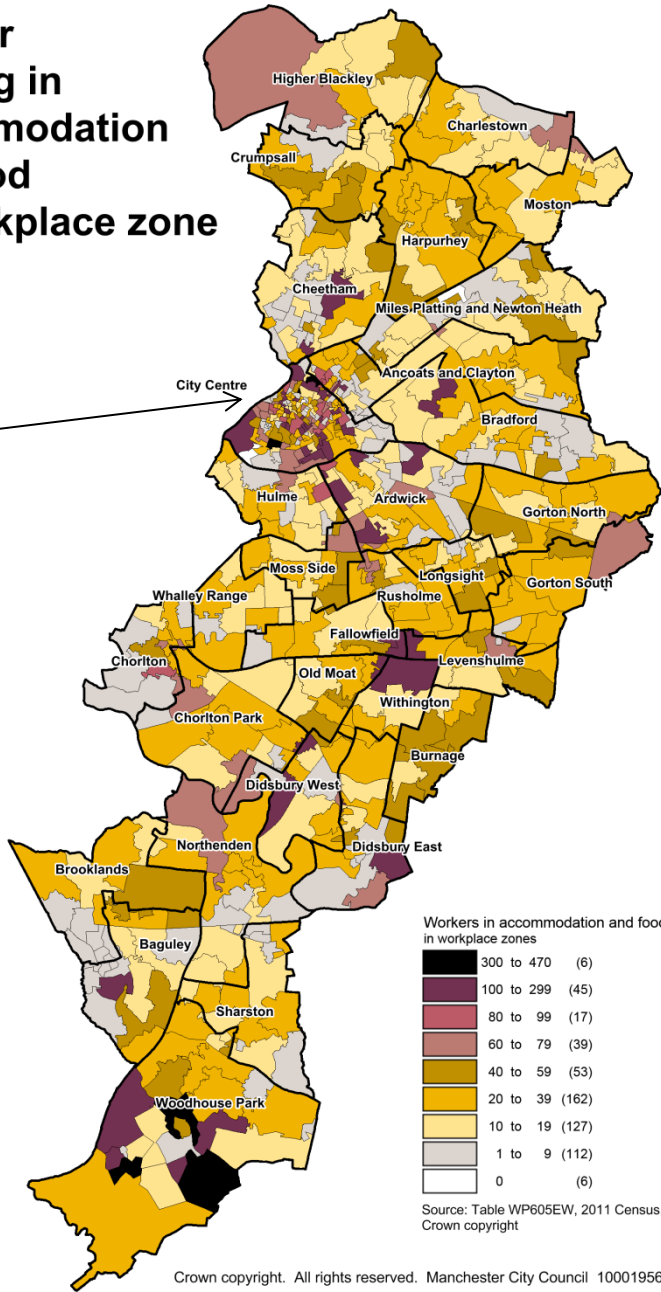
Workers in accommodation and food
in workplace zones



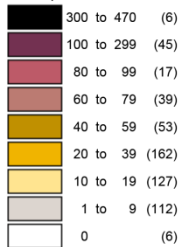
Source: Table WP605EW, 2011 Census, ONS
Crown copyright

Crown copyright. All rights reserved. Manchester City Council 100019568 (2014)

**Number
working in
accommodation
and food
by workplace zone**



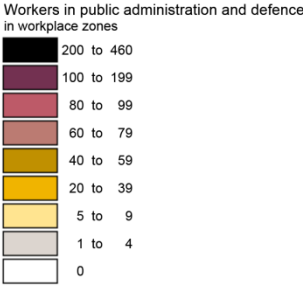
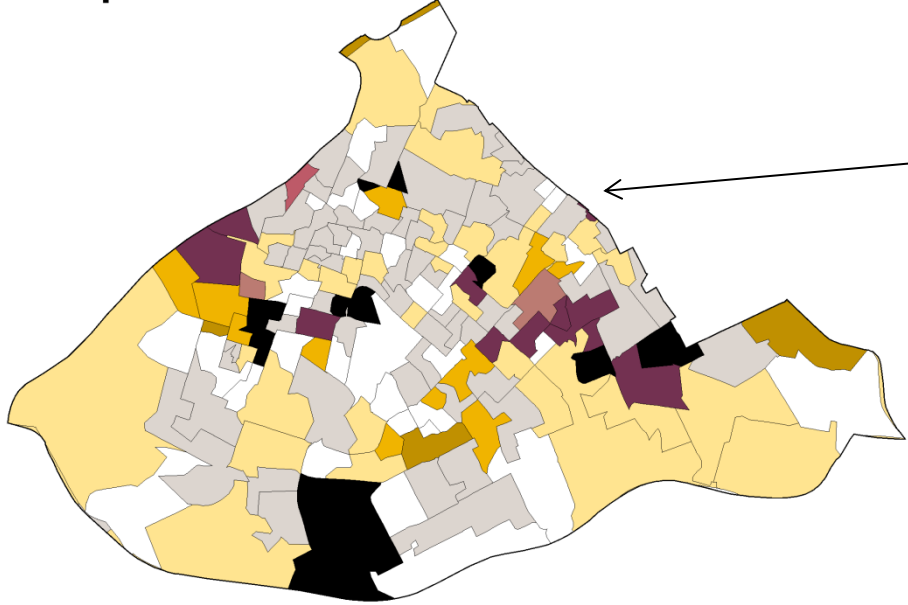
Workers in accommodation and food
in workplace zones



Source: Table WP605EW, 2011 Census, ONS
Crown copyright

Crown copyright. All rights reserved. Manchester City Council 100019568 (2014)

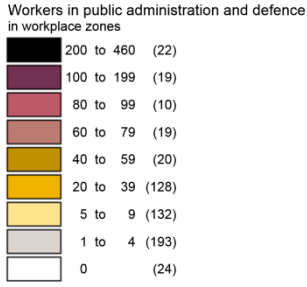
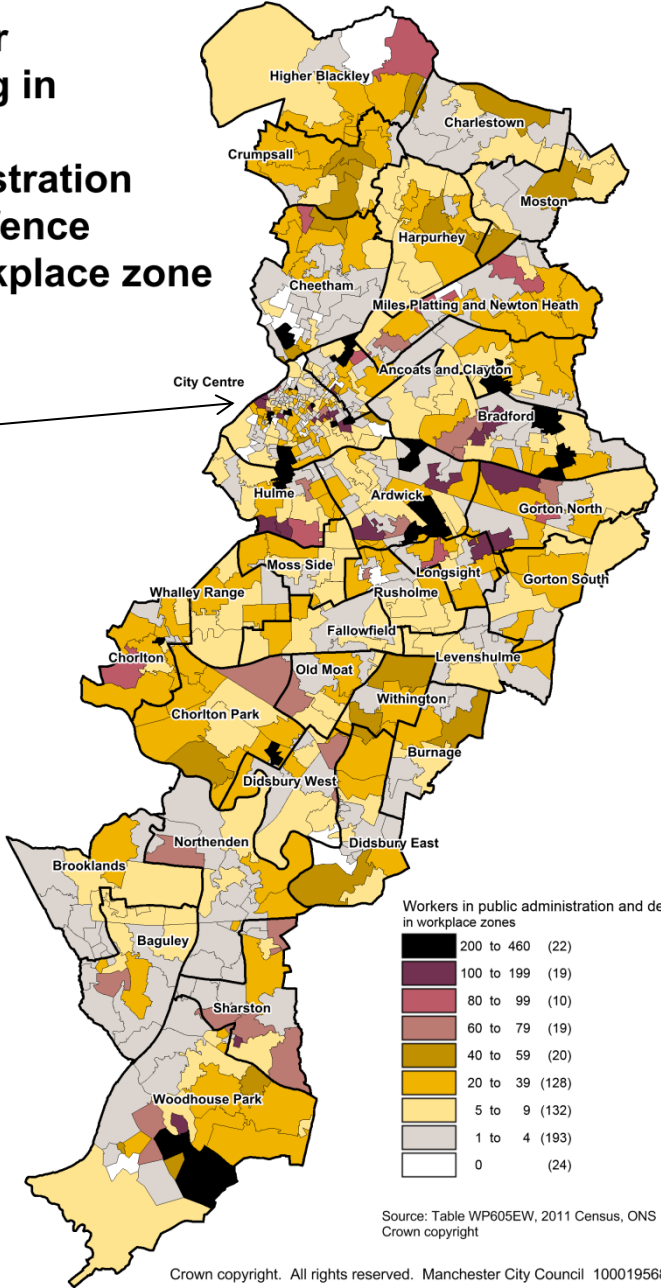
Number
working in
public administration
and defence
by City Centre
workplace zone



Source: Table WP605EW, 2011 Census, ONS
Crown copyright

Crown copyright. All rights reserved. Manchester City Council 100019568 (2014)

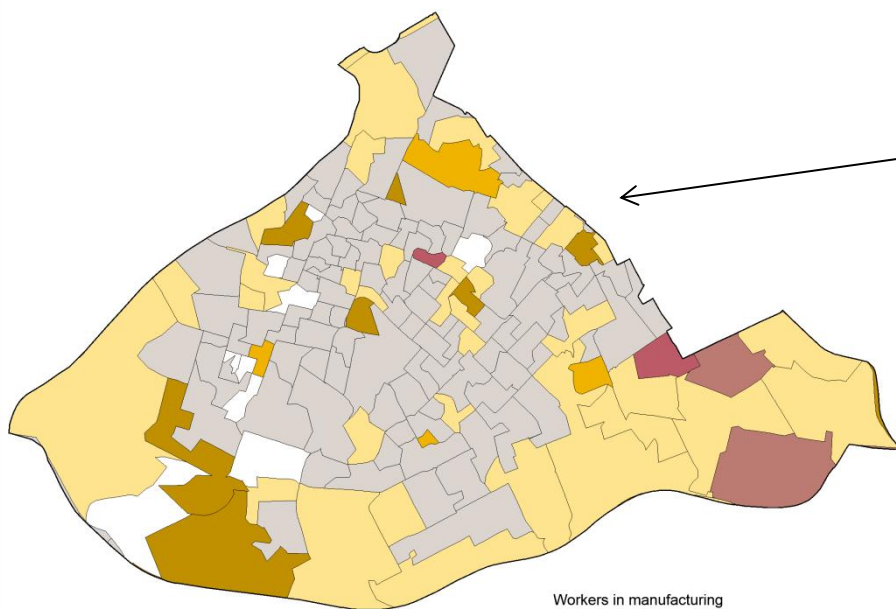
Number
working in
public
administration
and defence
by workplace zone



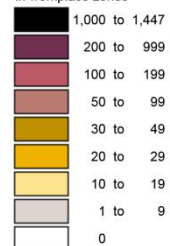
Source: Table WP605EW, 2011 Census, ONS
Crown copyright

Crown copyright. All rights reserved. Manchester City Council 100019568 (2014)

Number working in manufacturing by City Centre workplace zone



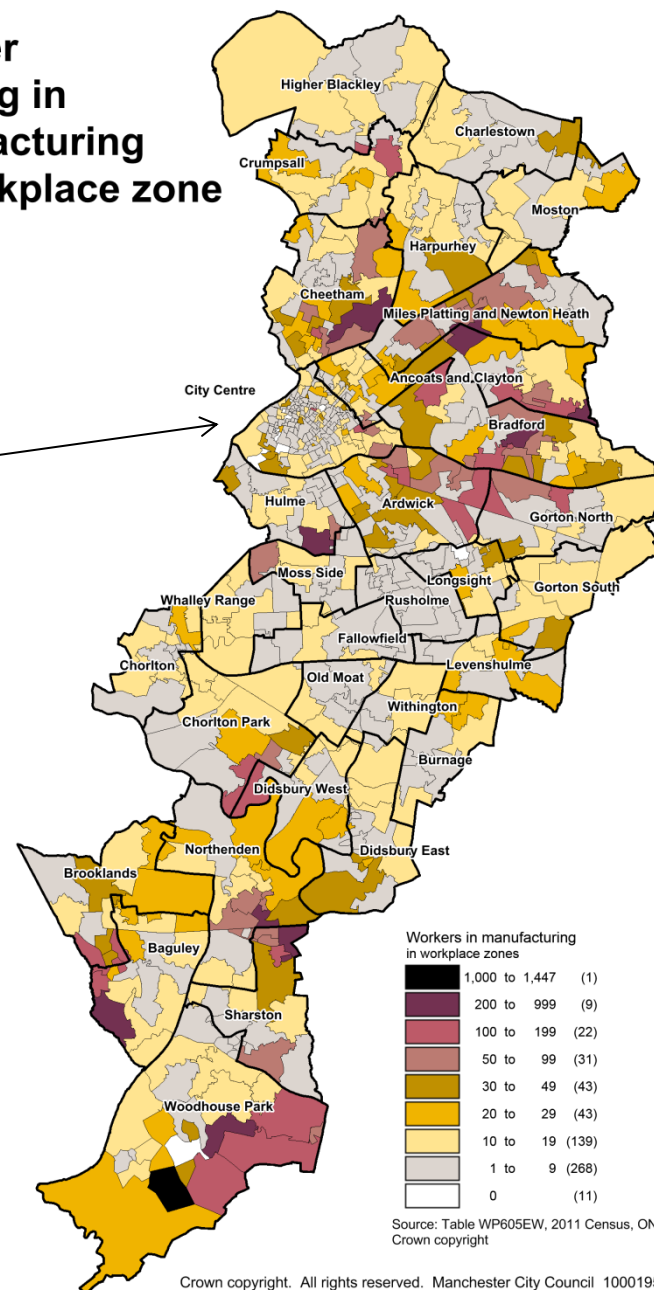
Workers in manufacturing in workplace zones



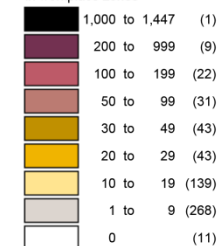
Source: Table WP605EW, 2011 Census, ONS
Crown copyright

Crown copyright. All rights reserved. Manchester City Council 100019568 (2014)

Number working in manufacturing by workplace zone



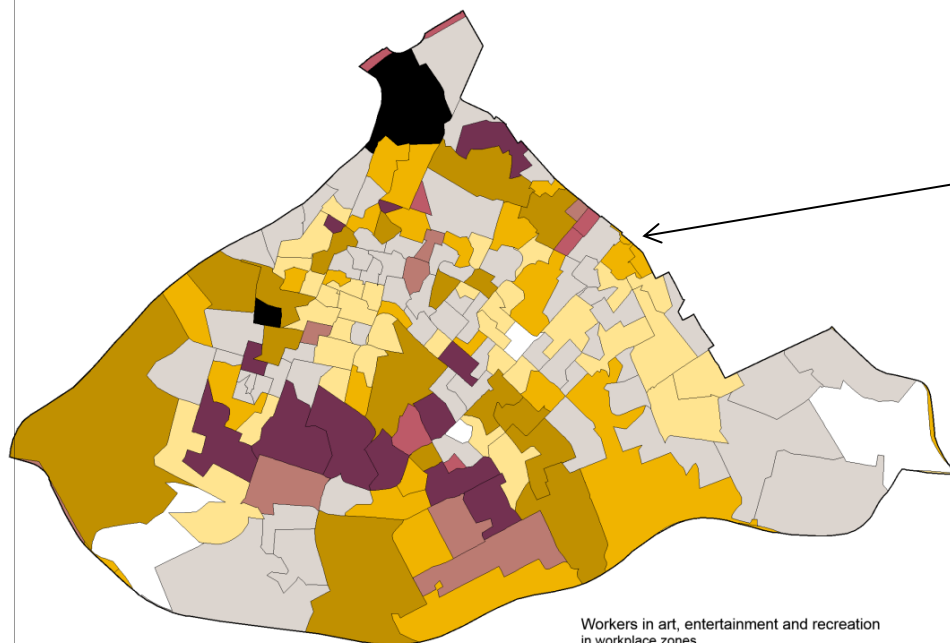
Workers in manufacturing in workplace zones



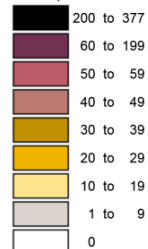
Source: Table WP605EW, 2011 Census, ONS
Crown copyright

Crown copyright. All rights reserved. Manchester City Council 100019568 (2014)

Number working in arts, entertainment and recreation by City Centre workplace zone



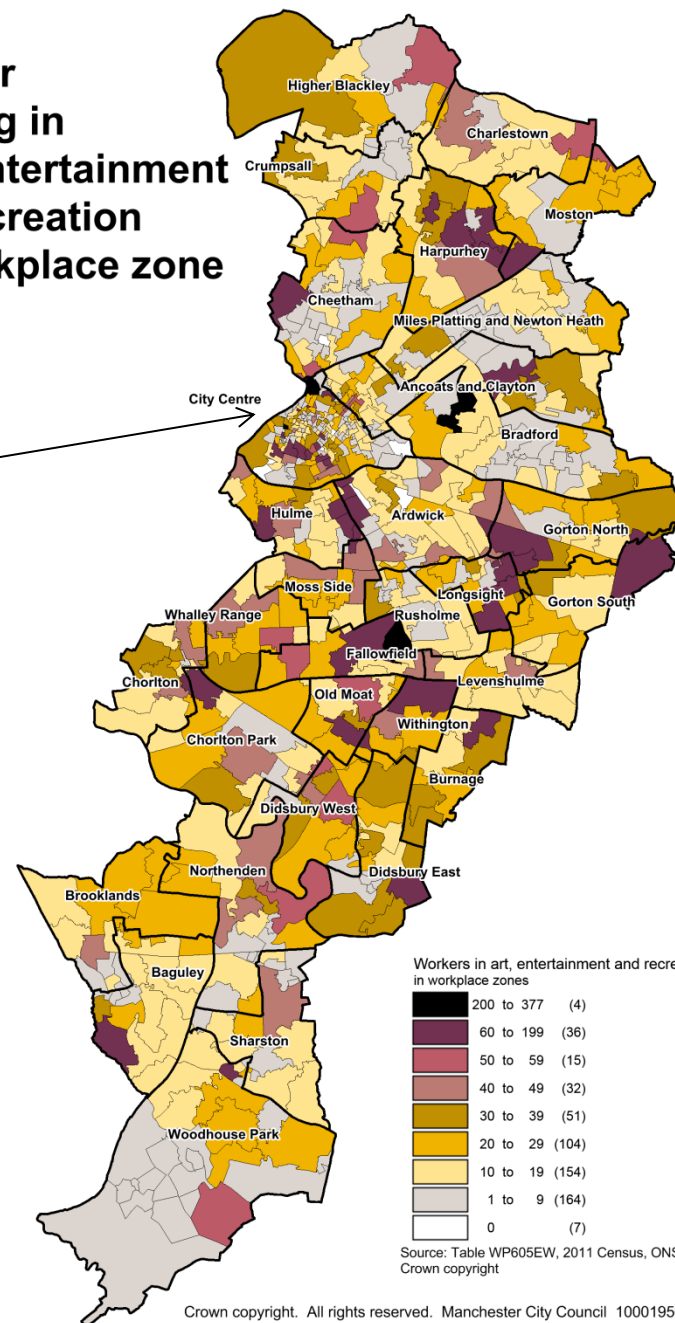
Workers in art, entertainment and recreation in workplace zones



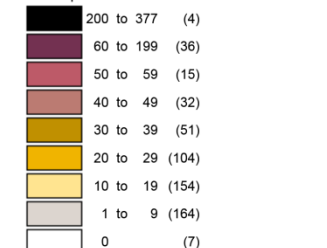
Source: Table WP605EW, 2011 Census, ONS
Crown copyright

Crown copyright. All rights reserved. Manchester City Council 100019568 (2014)

Number working in arts, entertainment and recreation by workplace zone



Workers in art, entertainment and recreation in workplace zones

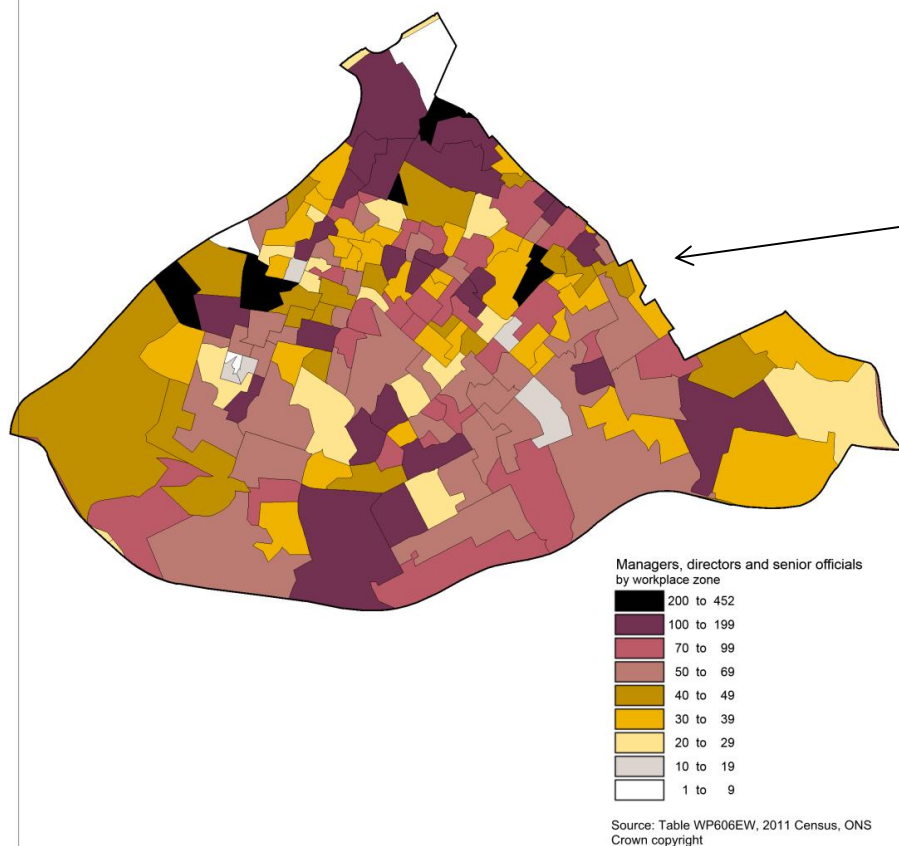


Source: Table WP605EW, 2011 Census, ONS
Crown copyright

Crown copyright. All rights reserved. Manchester City Council 100019568 (2014)

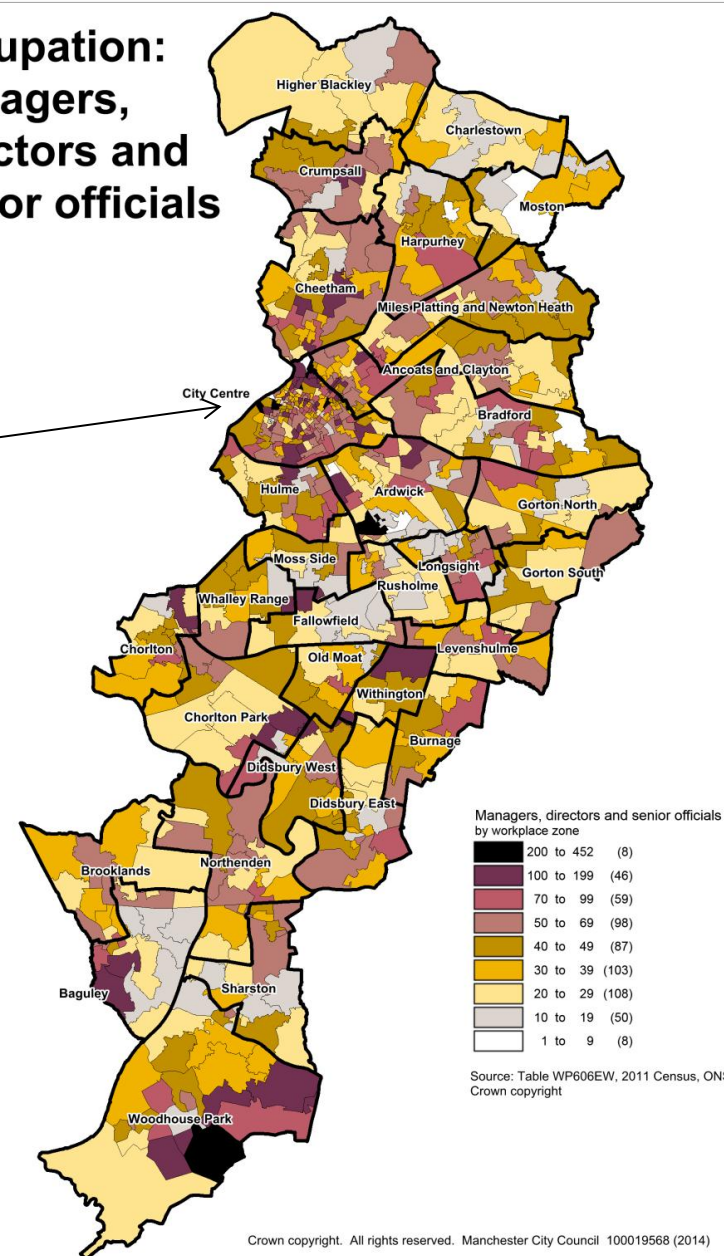
Occupation of workers in workplace zones

Occupation in City Centre workplace zones: managers, directors and senior officials



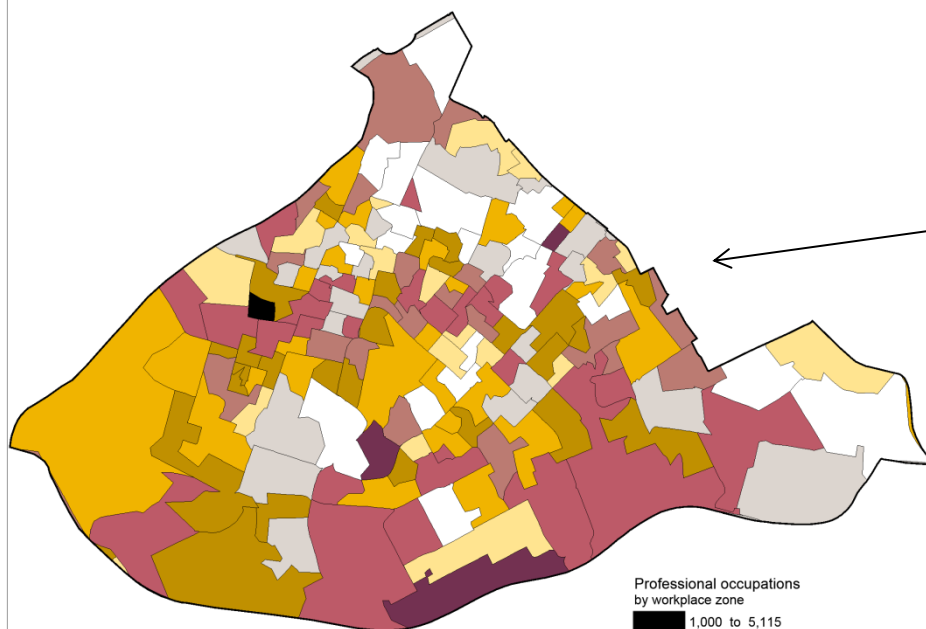
Crown copyright. All rights reserved. Manchester City Council 100019568 (2014)

Occupation: managers, directors and senior officials



Crown copyright. All rights reserved. Manchester City Council 100019568 (2014)

Occupation in City Centre: professional



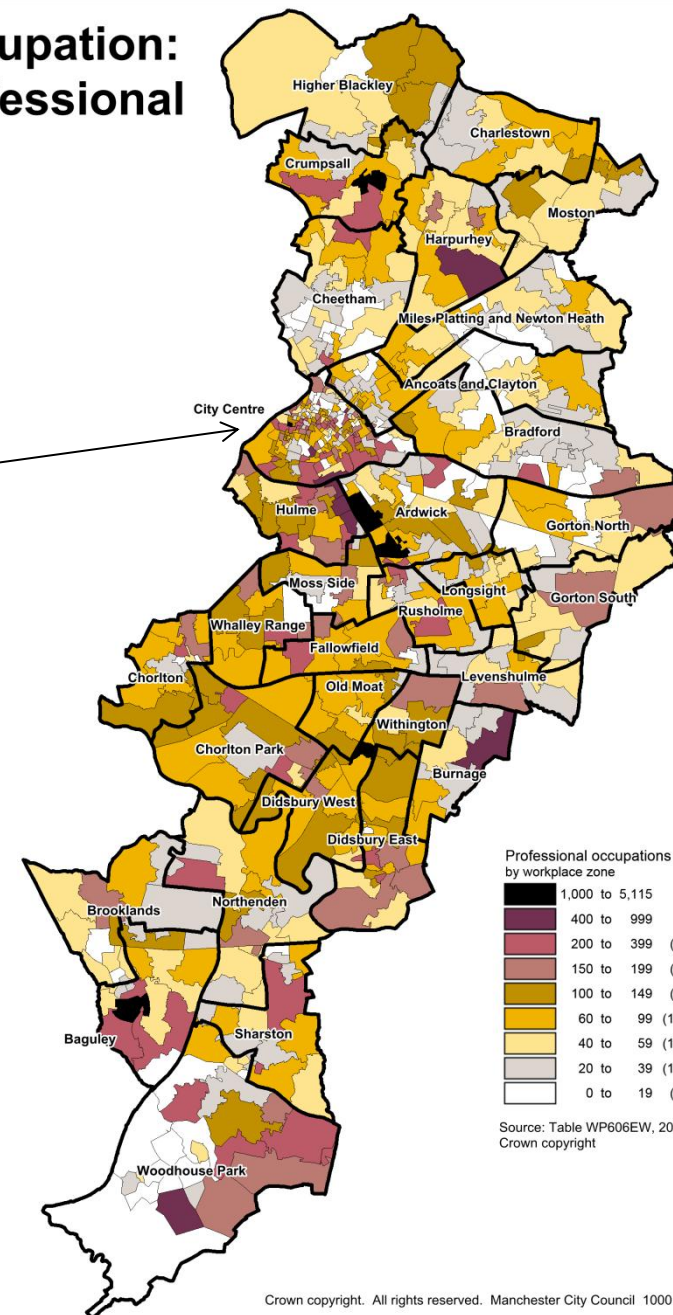
Professional occupations
by workplace zone

1,000 to 5,115
400 to 999
200 to 399
150 to 199
100 to 149
60 to 99
40 to 59
20 to 39
0 to 19

Source: Table WP606EW, 2011 Census, ONS
Crown copyright

Crown copyright. All rights reserved. Manchester City Council 100019568 (2014)

Occupation: professional



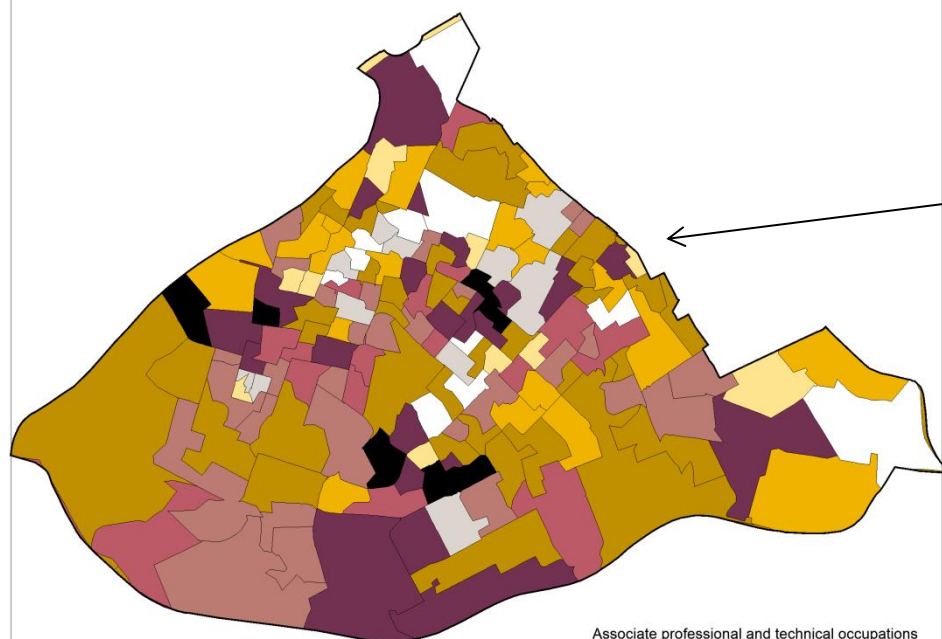
Professional occupations
by workplace zone

1,000 to 5,115 (7)
400 to 999 (9)
200 to 399 (52)
150 to 199 (48)
100 to 149 (68)
60 to 99 (114)
40 to 59 (101)
20 to 39 (102)
0 to 19 (66)

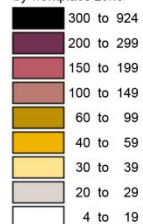
Source: Table WP606EW, 2011 Census, ONS
Crown copyright

Crown copyright. All rights reserved. Manchester City Council 100019568 (2014)

Occupation in City Centre: Associate professional and technical



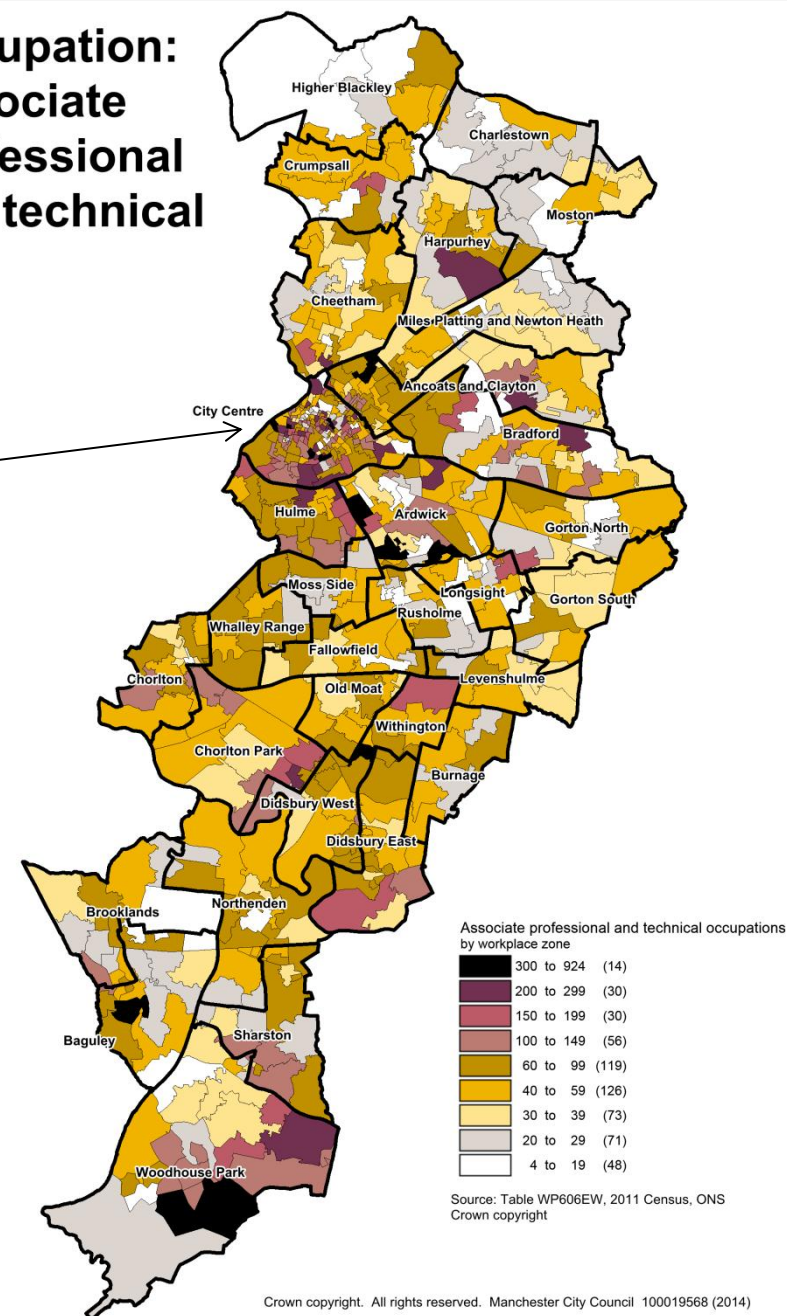
Associate professional and technical occupations
by workplace zone



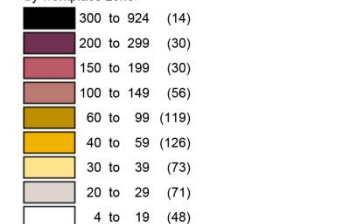
Source: Table WP606EW, 2011 Census, ONS
Crown copyright

Crown copyright. All rights reserved. Manchester City Council 100019568 (2014)

Occupation: Associate professional and technical



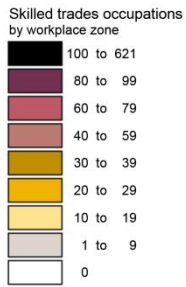
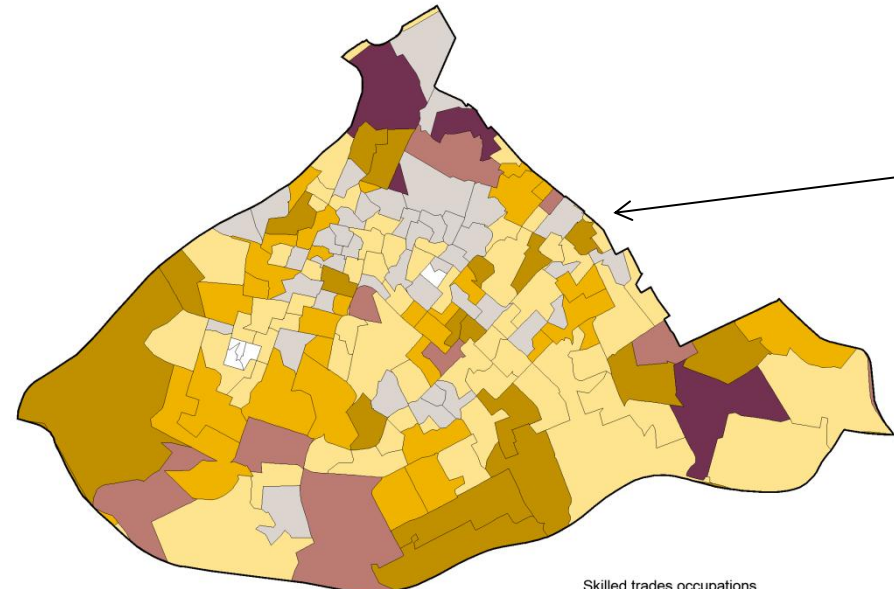
Associate professional and technical occupations
by workplace zone



Source: Table WP606EW, 2011 Census, ONS
Crown copyright

Crown copyright. All rights reserved. Manchester City Council 100019568 (2014)

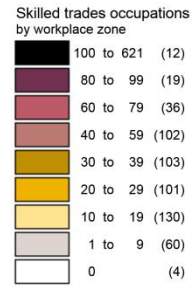
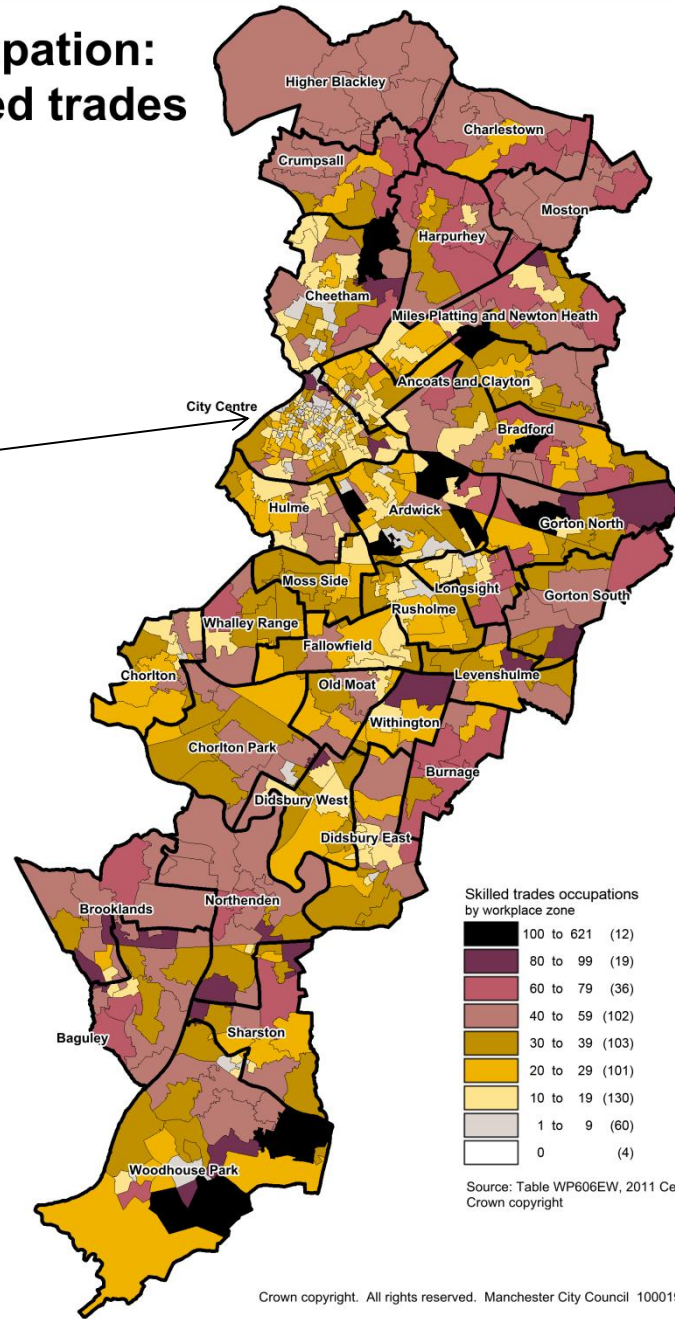
Occupation in City Centre: Skilled trades



Source: Table WP606EW, 2011 Census, ONS
Crown copyright

Crown copyright. All rights reserved. Manchester City Council 100019568 (2014)

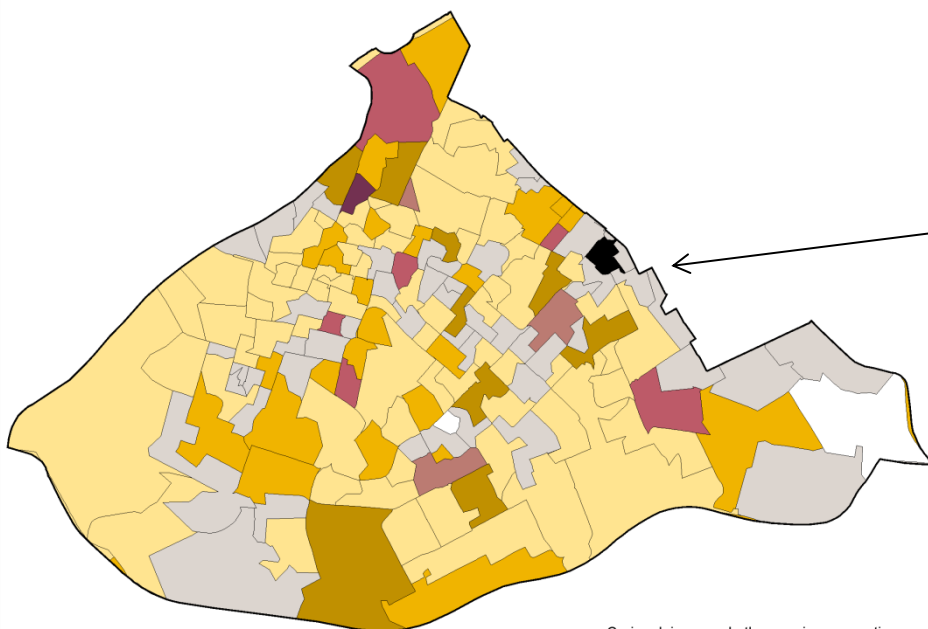
Occupation: Skilled trades



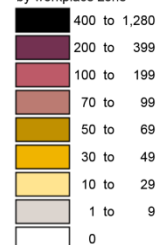
Source: Table WP606EW, 2011 Census, ONS
Crown copyright

Crown copyright. All rights reserved. Manchester City Council 100019568 (2014)

Occupation: Caring, leisure and other services



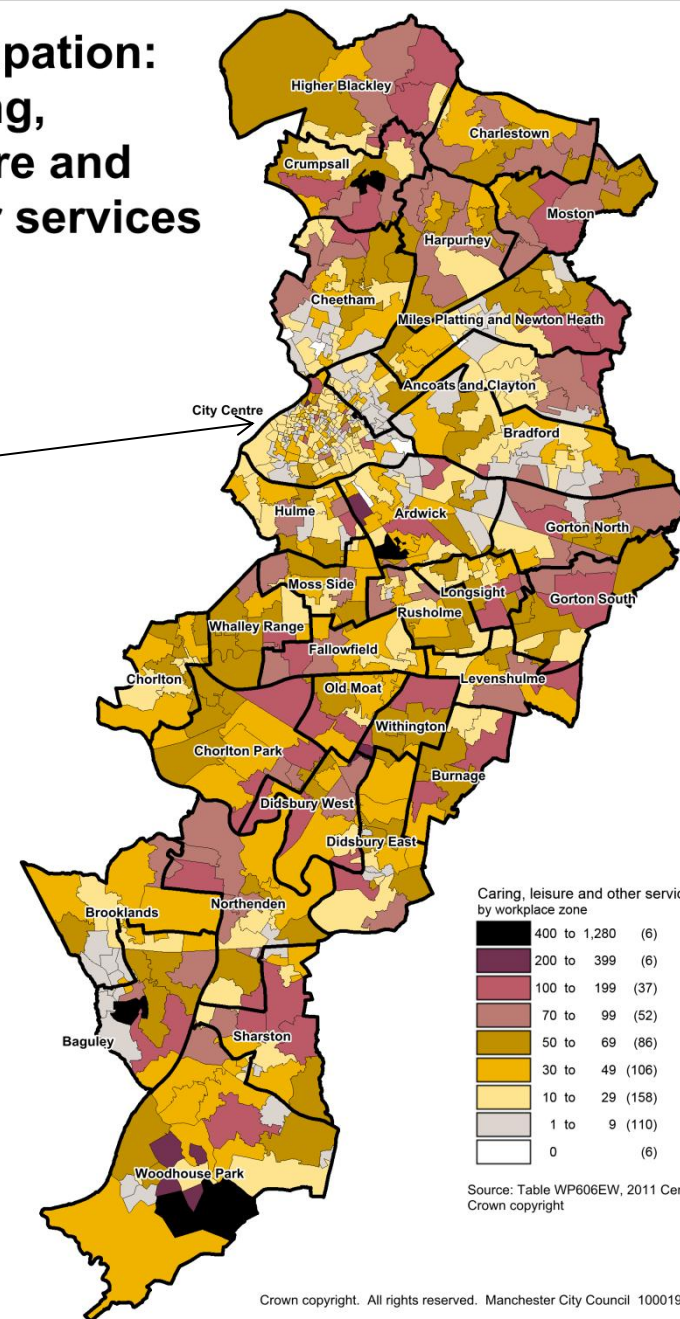
Caring, leisure and other service occupations
by workplace zone



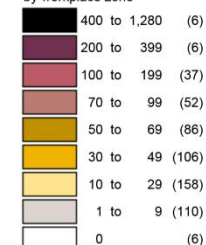
Source: Table WP606EW, 2011 Census, ONS
Crown copyright

Crown copyright. All rights reserved. Manchester City Council 100019568 (2014)

Occupation: Caring, leisure and other services



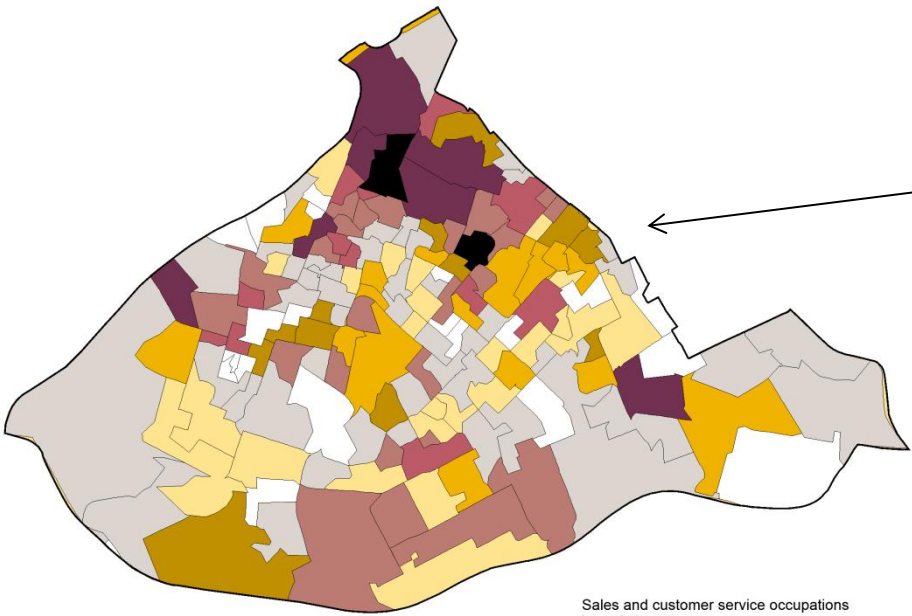
Caring, leisure and other service occupations
by workplace zone



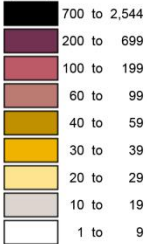
Source: Table WP606EW, 2011 Census, ONS
Crown copyright

Crown copyright. All rights reserved. Manchester City Council 100019568 (2014)

Occupation in City Centre: sales and customer services



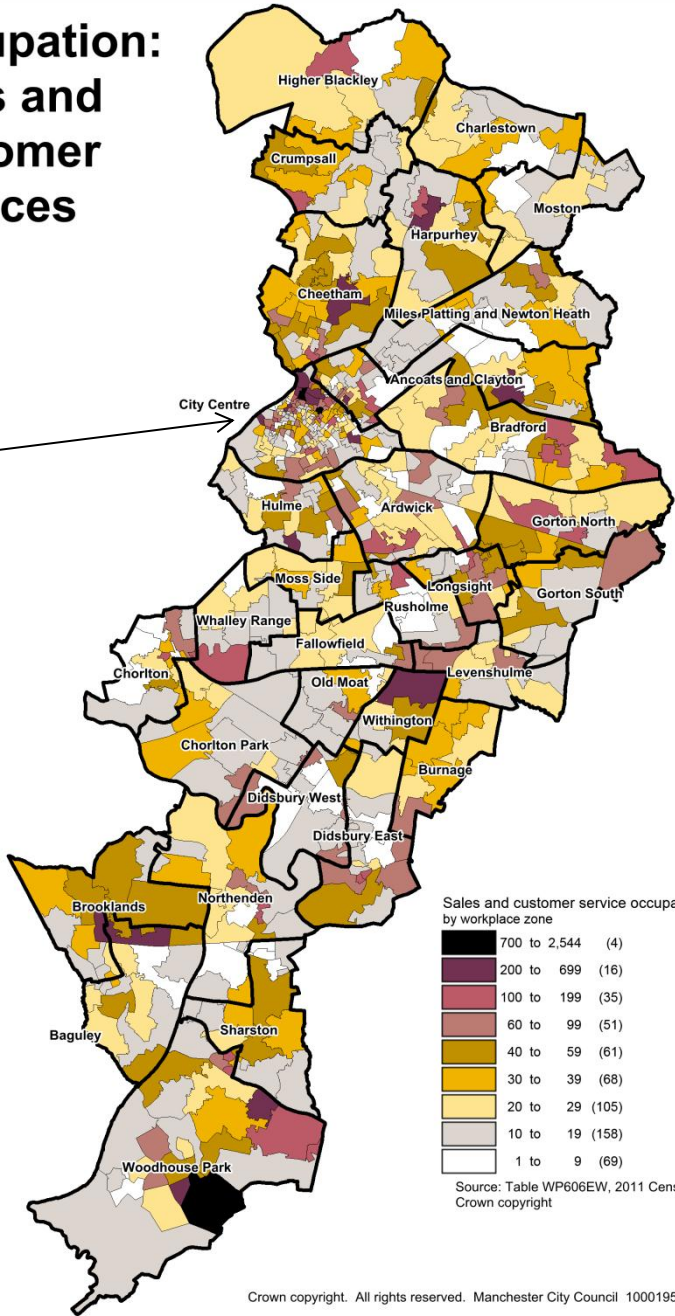
Sales and customer service occupations
by workplace zone



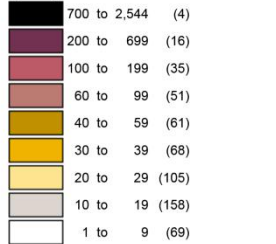
Source: Table WP606EW, 2011 Census, ONS
Crown copyright

Crown copyright. All rights reserved. Manchester City Council 100019568 (2014)

Occupation: sales and customer services



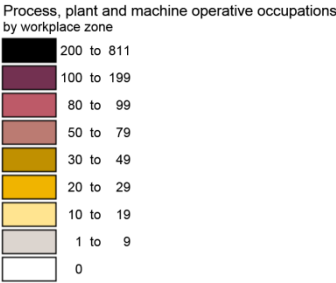
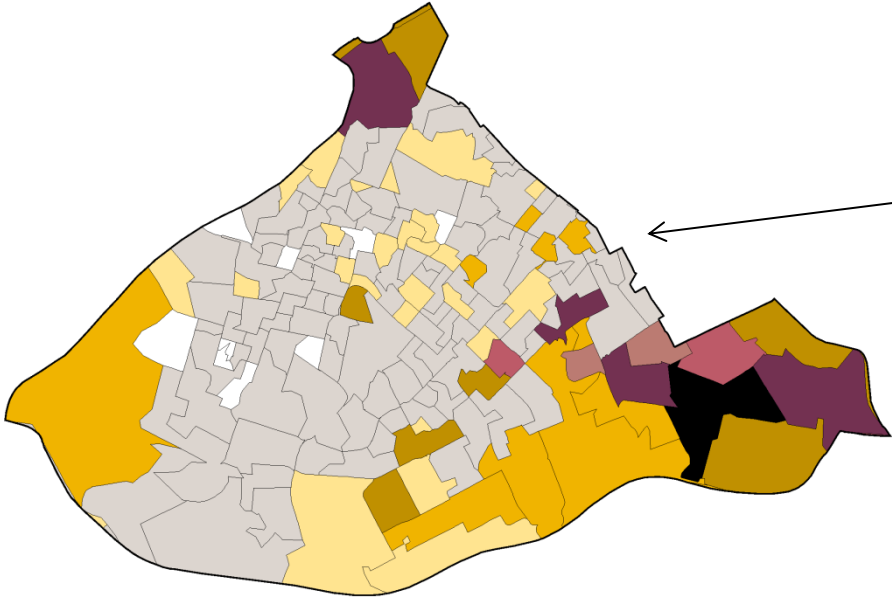
Sales and customer service occupations
by workplace zone



Source: Table WP606EW, 2011 Census, ONS
Crown copyright

Crown copyright. All rights reserved. Manchester City Council 100019568 (2014)

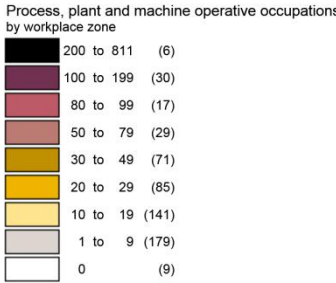
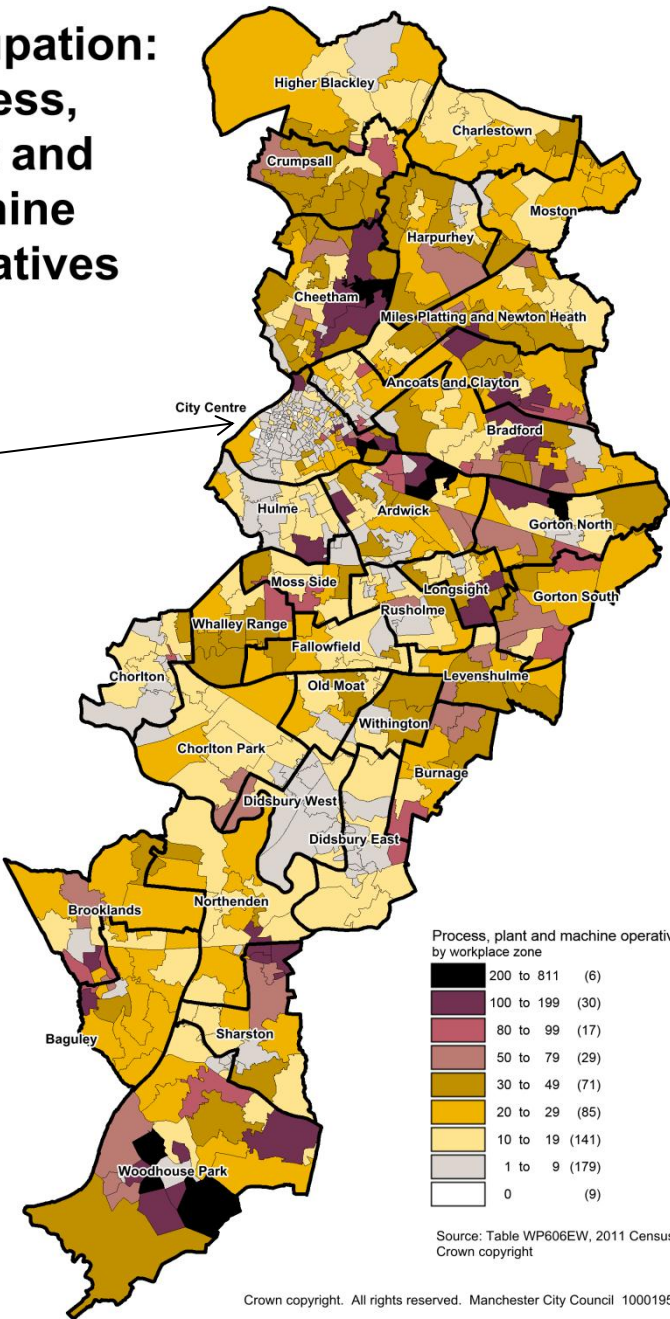
Occupation in City Centre: process, plant and machine operatives



Source: Table WP606EW, 2011 Census, ONS
Crown copyright

Crown copyright. All rights reserved. Manchester City Council 100019568 (2014)

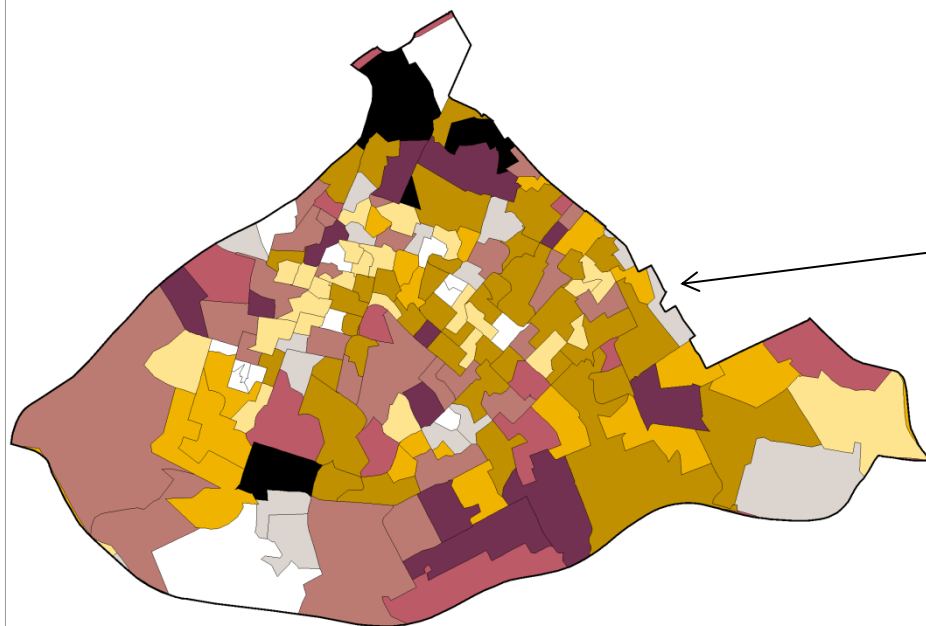
Occupation: process, plant and machine operatives



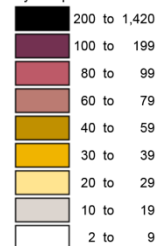
Source: Table WP606EW, 2011 Census, ONS
Crown copyright

Crown copyright. All rights reserved. Manchester City Council 100019568 (2014)

Occupation in City Centre: Elementary



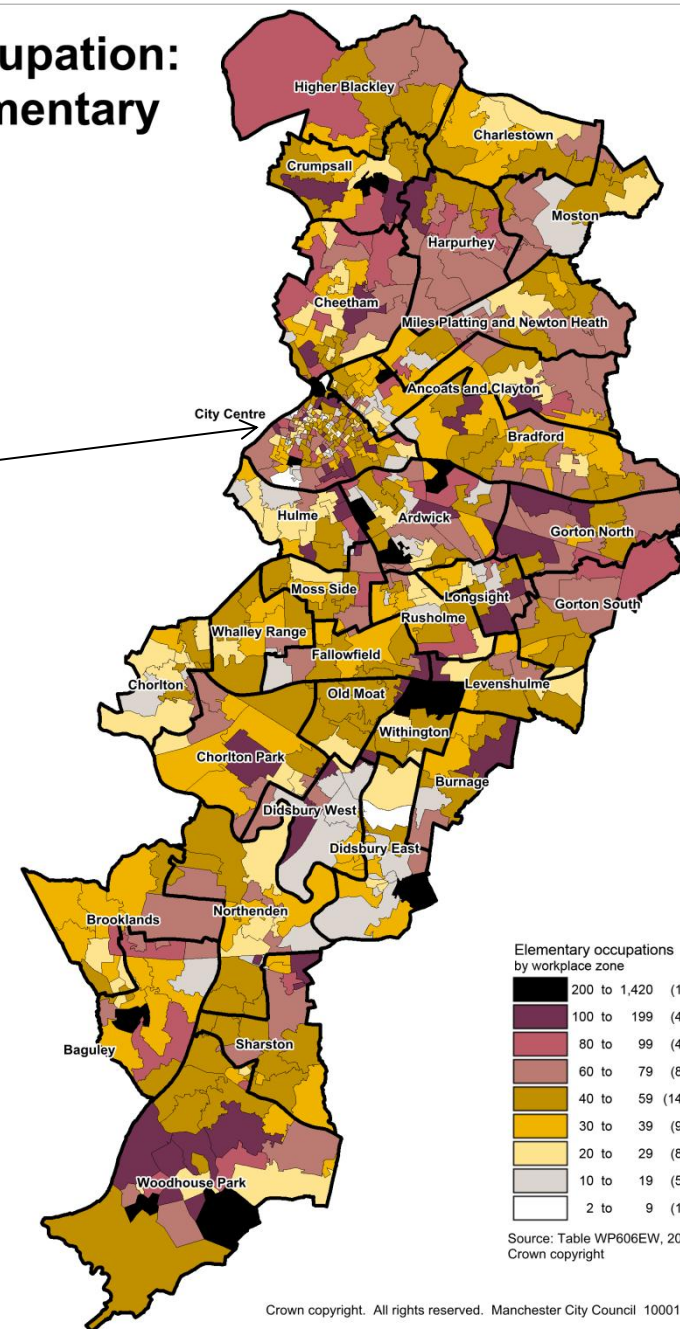
Elementary occupations
by workplace zone



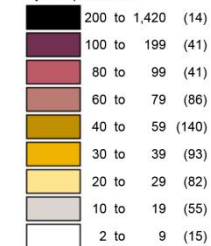
Source: Table WP606EW, 2011 Census, ONS
Crown copyright

Crown copyright. All rights reserved. Manchester City Council 100019568 (2014)

Occupation: Elementary



Elementary occupations
by workplace zone



Source: Table WP606EW, 2011 Census, ONS
Crown copyright

Crown copyright. All rights reserved. Manchester City Council 100019568 (2014)