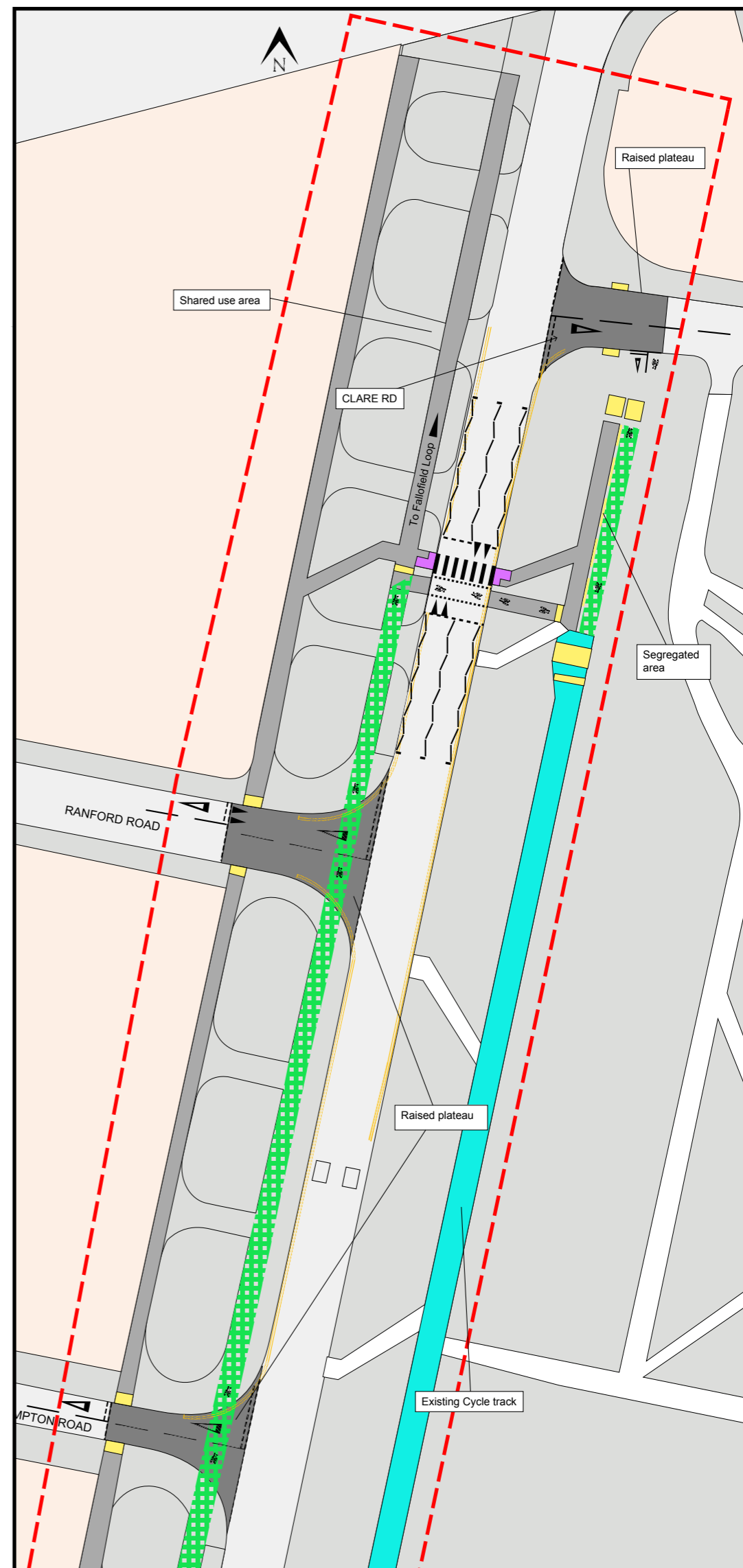
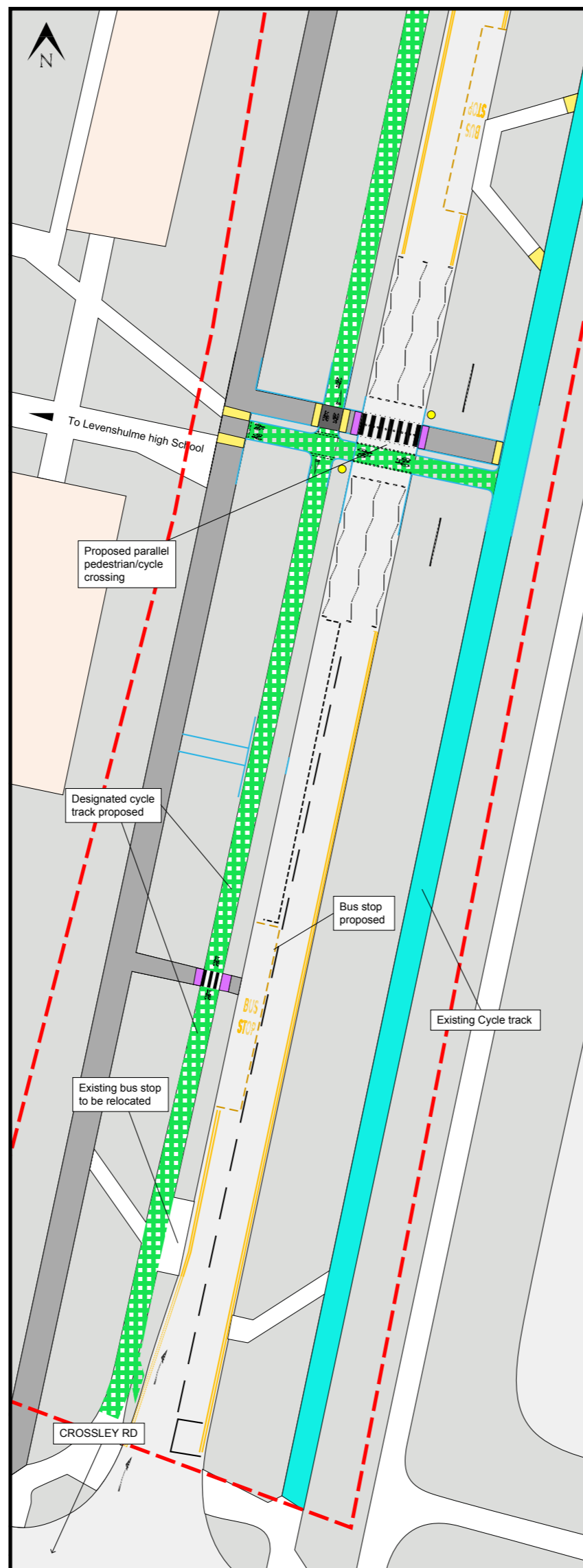


# Phase 2 latest design

This plan shows the proposed changes to take place on Errwood Road

- Controlled crossing with cycle track
- Relocation of bus bays



## KEY

- Proposed works boundary
- Footway resurfacing
- Upgraded cycle route
- Proposed tactile paving
- Proposed tactile buff paving
- Proposed tactile cycle paving
- Existing cycle track
- Raised plateau

