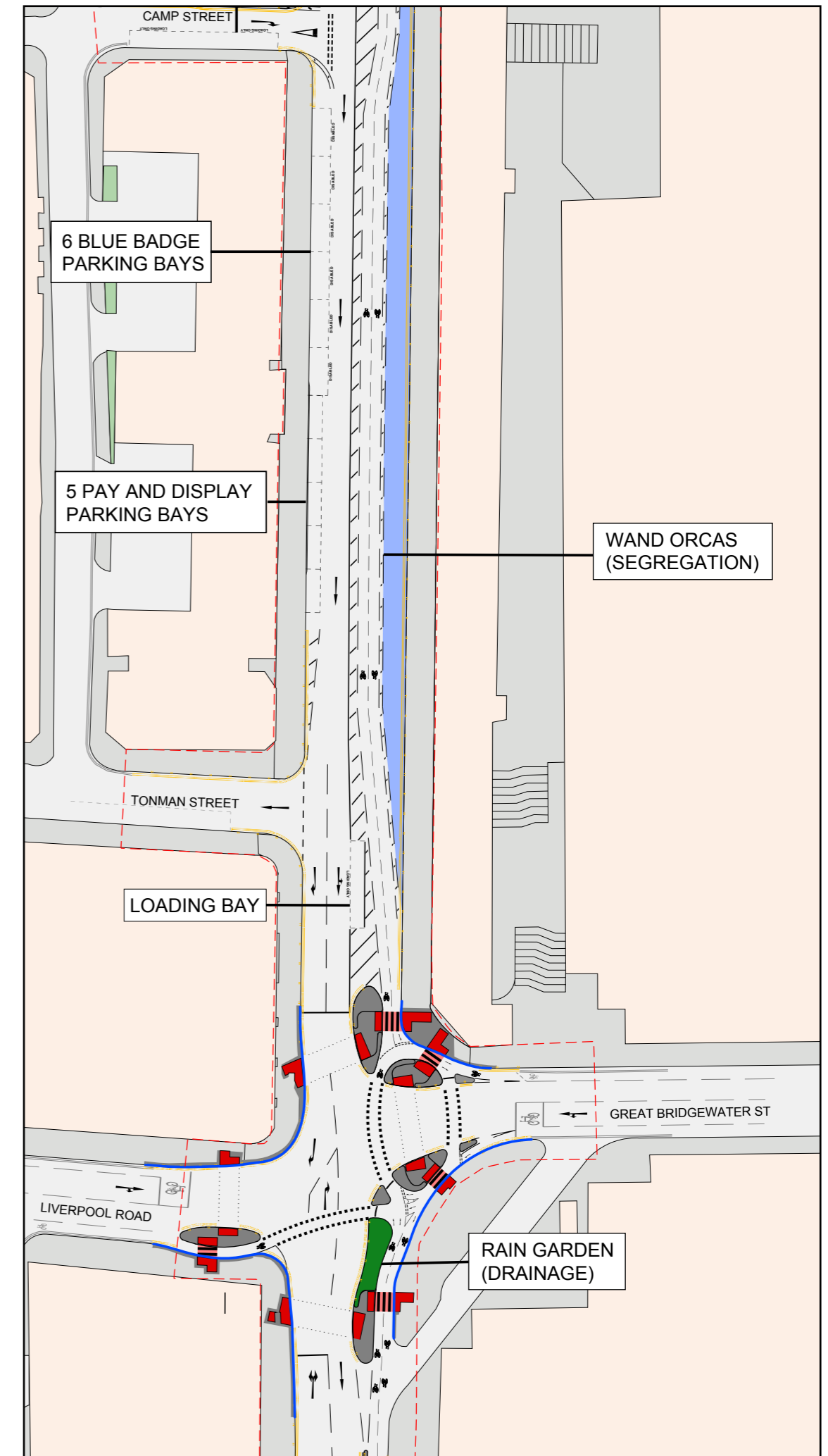
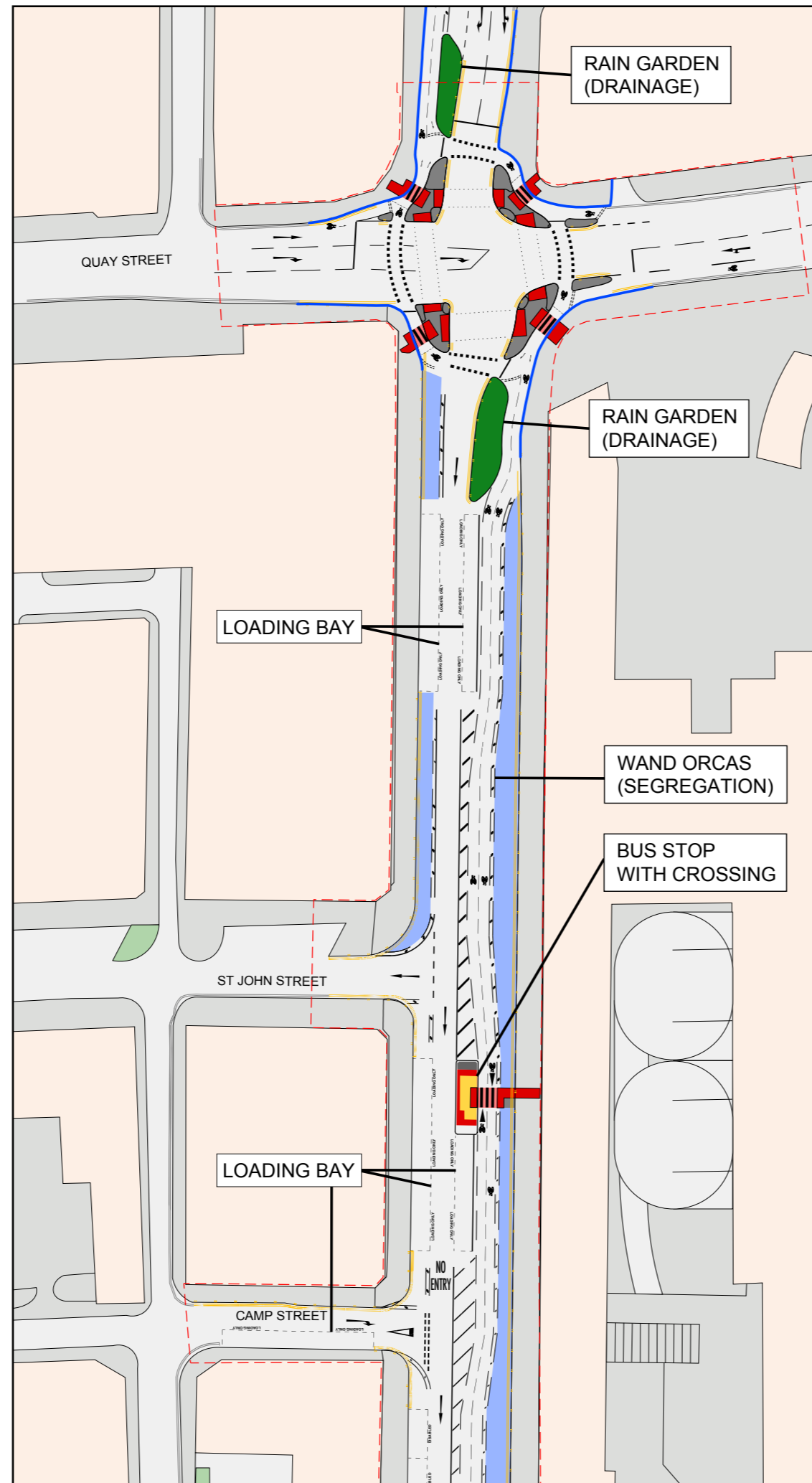








Active Travel Fund (ATF) City Centre Scheme section 1: Quay Street – Liverpool Road

This plan shows the permanent changes taking place on Deansgate between Quay Street and Liverpool Road:

- Two-way segregated contraflow cycleway
- All traffic one-way southbound only
- Loading bays
- Blue badge parking bays
- Pay and display parking bays
- Bus stop
- Two CYCLOPS-style controlled junctions with 'Rain Garden' drainage
- Zebra crossings



KEY

-  Proposed footway/
paved area
-  Proposed footway
at carriage way level
-  Proposed controlled
crossing
-  Proposed zebra
crossing
-  Proposed kerb
-  Scheme boundary