

**KEY**

Manchester City Council boundary

**Open Space Typology**

Parks and gardens

Strategic parks

**Accessibility Buffers**

Parks and gardens - 710m buffer

Strategic parks - 710m buffer

**Note:**  
Based on Open Space data layer provided by Manchester City Council and updated as part of this Assessment.  
PRow data sourced from rowmaps.com.

Reproduced by permission of Ordnance Survey on behalf of HMSO.  
Contains OS data © Crown Copyright and database right 2024. All rights reserved.  
Contains data from OS Zoomstack. Ordnance Survey AC0000812035.  
Contains public sector information licensed under the Open Government Licence v3.0.



Rev	Description	Drawn	Approved	Date

**THE ENVIRONMENT PARTNERSHIP**

401 Faraday Street, Birchwood Park, Warrington, WA3 6GA  
Tel 01925 844004 e-mail tep@tep.uk.com www.tep.uk.com

Project  
Manchester Open Space Assessment Review

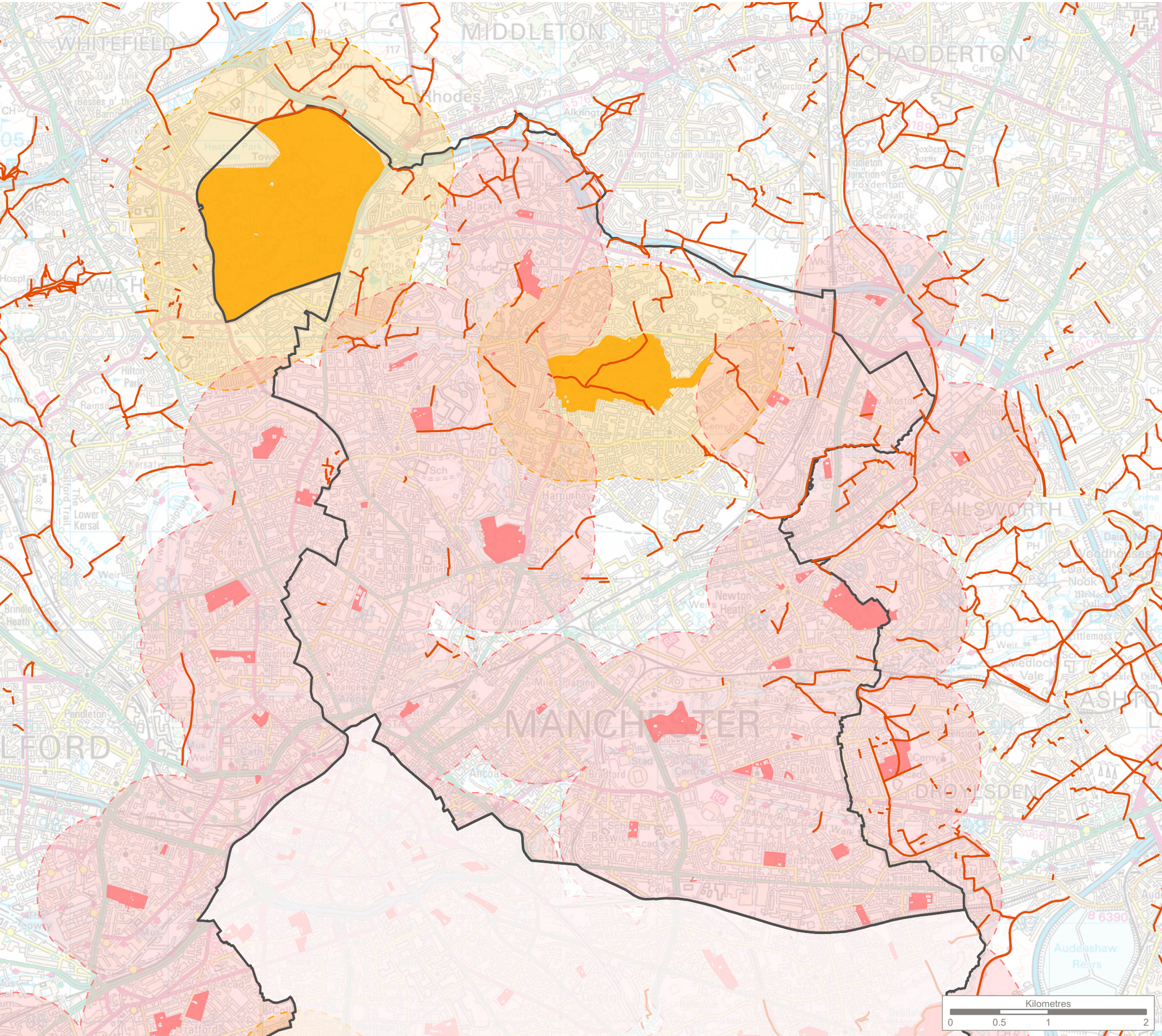
Title  
Open Space Accessibility - Parks and Gardens  
**Overview**

Drawing Number  
G10280.01.004.1

Page 1 of 5

Drawn IJ	Checked CW	Approved RM	Scale 1:100,000 @ A3	Date 16/07/2024
-------------	---------------	----------------	-------------------------	--------------------





**KEY**

Manchester City Council boundary

Public Rights of Way (PRoW)

**Open Space Typology**

Parks and gardens


Strategic parks

**Accessibility Buffers**

Parks and gardens - 710m buffer

Strategic parks - 710m buffer

**Note:**  
Based on Open Space data layer provided by Manchester City Council and updated as part of this Assessment. PRoW data sourced from rowmaps.com.



Reproduced by permission of Ordnance Survey on behalf of HMSO.  
Contains OS data © Crown Copyright and database right 2024. All rights reserved.  
Contains data from OS Zoomstack. **Ordnance Survey AC0000812035.**  
Contains public sector information licensed under the Open Government Licence v3.0.



Rev	Description	Drawn	Approved	Date



**THE ENVIRONMENT PARTNERSHIP**

401 Faraday Street, Birchwood Park, Warrington, WA3 6GA  
Tel 01925 844004 e-mail tep@tep.uk.com www.tep.uk.com

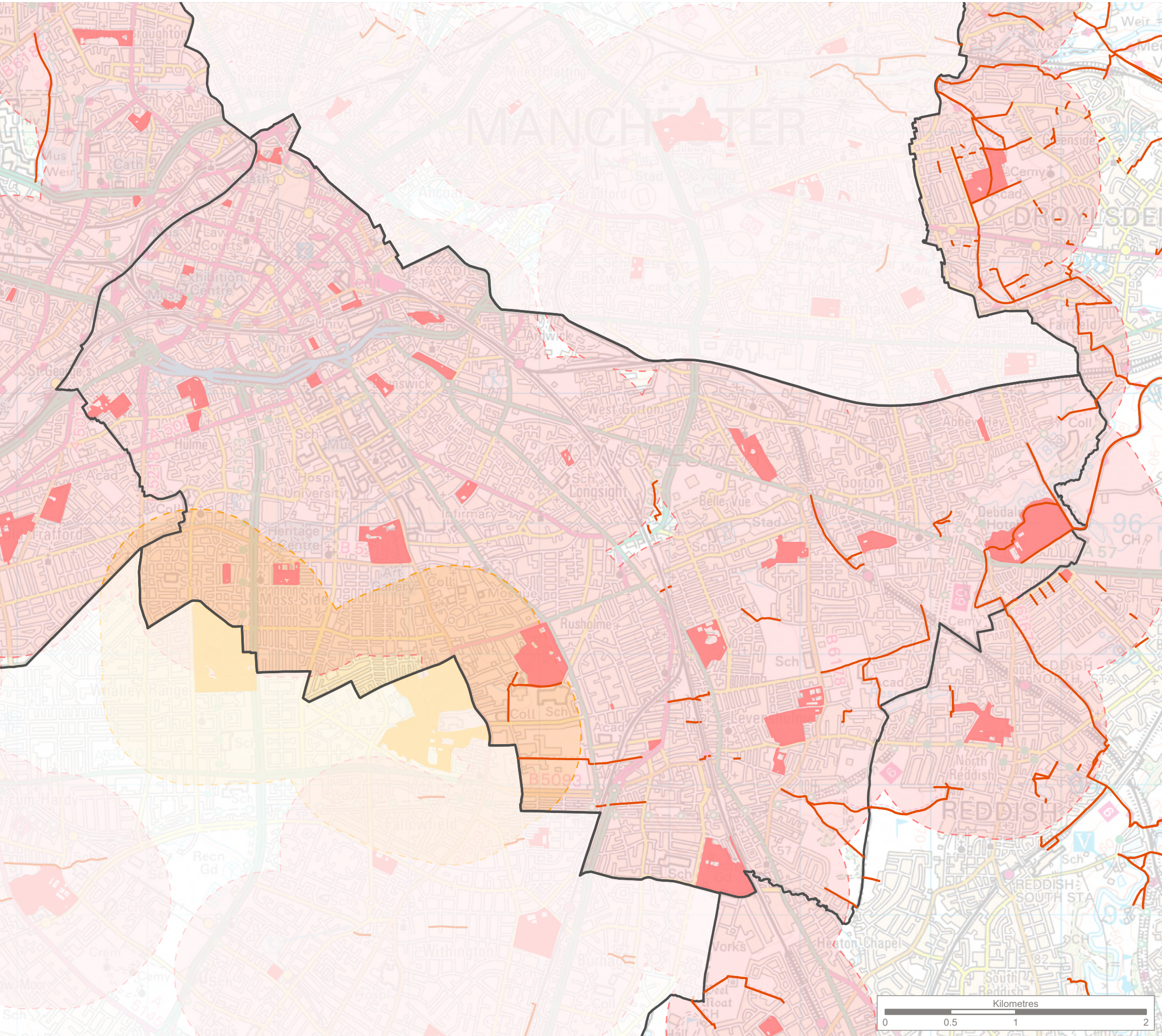
Project  
Manchester Open Space Assessment Review

Title  
Open Space Accessibility - Parks and Gardens  
**North**

Drawing Number G10280.01.004.2	Page 2 of 5
-----------------------------------	-------------

Drawn	Checked	Approved	Scale	Date
IJ	CW	RM	1:40,000 @ A3	16/07/2024





**KEY**

Manchester City Council boundary

Public Rights of Way (PRoW)

**Open Space Typology**

Parks and gardens

Strategic parks

**Accessibility Buffers**

Parks and gardens - 710m buffer

Strategic parks - 710m buffer

**Note:**  
Based on Open Space data layer provided by Manchester City Council and updated as part of this Assessment.  
PRoW data sourced from rowmaps.com.

Reproduced by permission of Ordnance Survey on behalf of HMSO.  
Contains OS data © Crown Copyright and database right 2024. All rights reserved.  
Contains data from OS Zoomstack. Ordnance Survey AC0000812035.  
Contains public sector information licensed under the Open Government Licence v3.0.



Rev	Description	Drawn	Approved	Date



**THE ENVIRONMENT PARTNERSHIP**

401 Faraday Street, Birchwood Park, Warrington, WA3 6GA  
Tel 01925 844004 e-mail tep@tep.uk.com www.tep.uk.com

Project  
Manchester Open Space Assessment Review

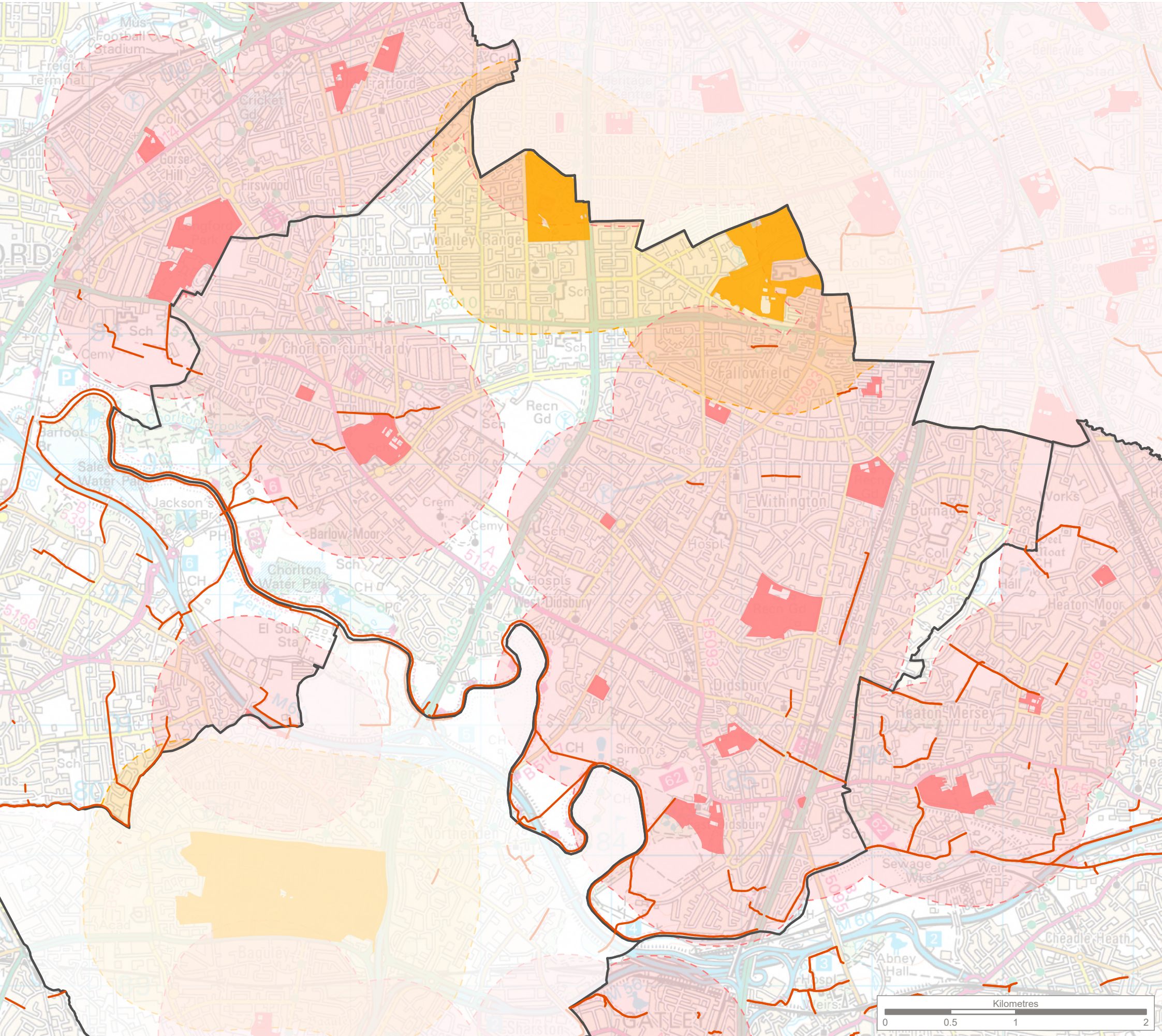
Title  
Open Space Accessibility - Parks and Gardens  
Central

Drawing Number  
G10280.01.004.3

Page 3 of 5

Drawn	Checked	Approved	Scale	Date
IJ	CW	RM	1:30,000 @ A3	16/07/2024





**KEY**

Manchester City Council boundary

Public Rights of Way (PRoW)

**Open Space Typology**

Parks and gardens

Strategic parks

**Accessibility Buffers**

Parks and gardens - 710m buffer

Strategic parks - 710m buffer

**Note:**  
Based on Open Space data layer provided by Manchester City Council and updated as part of this Assessment.  
PRoW data sourced from rowmaps.com.

Reproduced by permission of Ordnance Survey on behalf of HMSO.  
Contains OS data © Crown Copyright and database right 2024. All rights reserved.  
Contains data from OS Zoomstack. **Ordnance Survey AC0000812035.**  
Contains public sector information licensed under the Open Government Licence v3.0.



Rev	Description	Drawn	Approved	Date

**THE ENVIRONMENT PARTNERSHIP**

401 Faraday Street, Birchwood Park, Warrington, WA3 6GA  
Tel 01925 844004 e-mail tep@tep.uk.com www.tep.uk.com

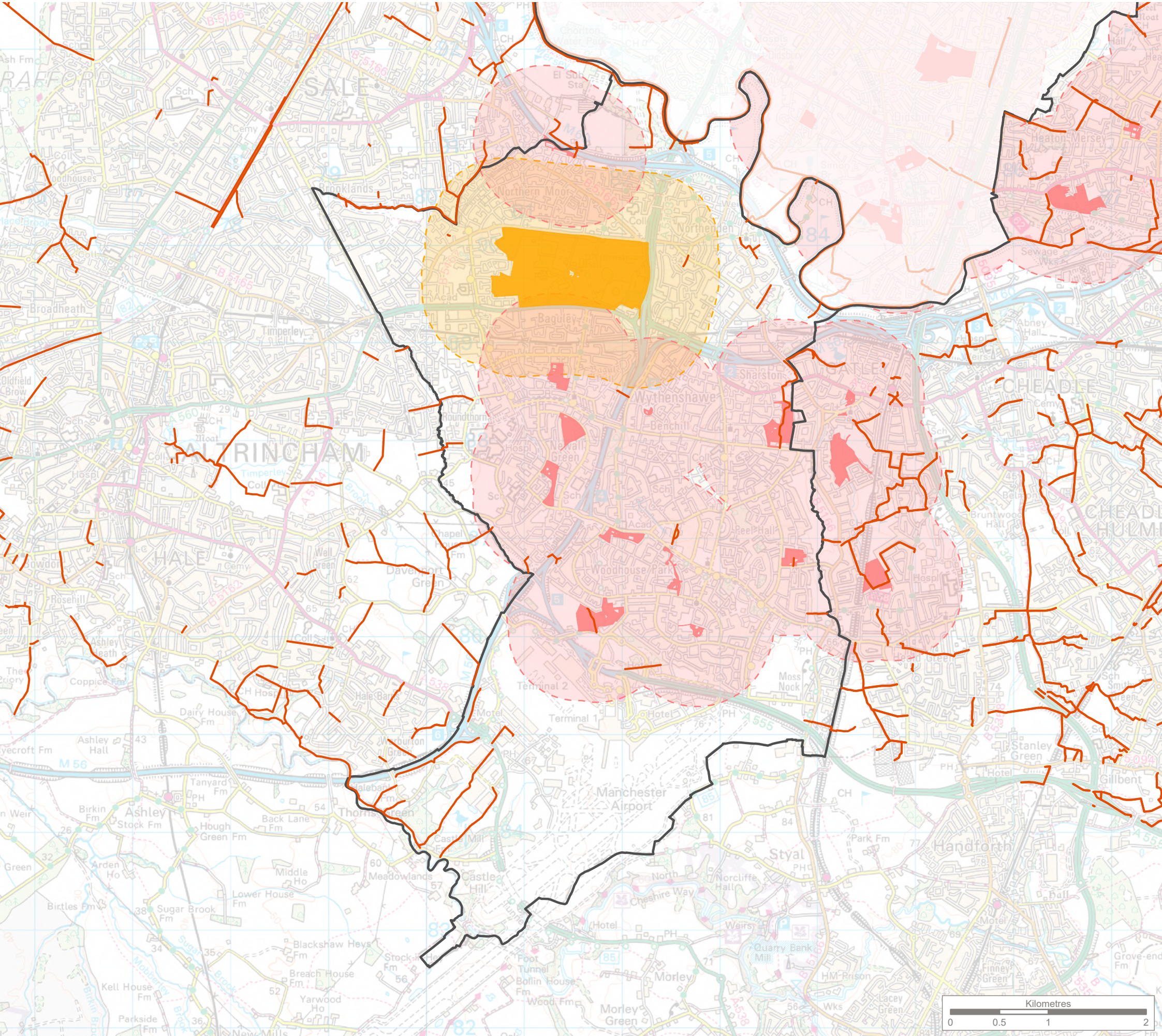
Project  
Manchester Open Space Assessment Review

Title  
**Open Space Accessibility - Parks and Gardens South**

Drawing Number G10280.01.004.4	Page 4 of 5
-----------------------------------	-------------

Drawn IJ	Checked CW	Approved RM	Scale 1:30,000 @ A3	Date 16/07/2024
-------------	---------------	----------------	------------------------	--------------------





**KEY**

Manchester City Council boundary

Public Rights of Way (PRoW)

**Open Space Typology**

Parks and gardens


Strategic parks

**Accessibility Buffers**

Parks and gardens - 710m buffer

Strategic parks - 710m buffer

**Note:**  
Based on Open Space data layer provided by Manchester City Council and updated as part of this Assessment.  
PRoW data sourced from rowmaps.com.



Reproduced by permission of Ordnance Survey on behalf of HMSO.  
Contains OS data © Crown Copyright and database right 2024. All rights reserved.  
Contains data from OS Zoomstack. Ordnance Survey AC0000812035.  
Contains public sector information licensed under the Open Government Licence v3.0.



Rev	Description	Drawn	Approved	Date



**THE ENVIRONMENT PARTNERSHIP**

401 Faraday Street, Birchwood Park, Warrington, WA3 6GA  
Tel 01925 844004 e-mail tep@tep.uk.com www.tep.uk.com

Project  
Manchester Open Space Assessment Review

Title  
**Open Space Accessibility - Parks and Gardens  
Wythenshawe**

Drawing Number <b>G10280.01.004.5</b>	Page 5 of 5
--	-------------

Drawn	Checked	Approved	Scale	Date
IJ	CW	RM	1:40,000 @ A3	16/07/2024