

**KEY**

Manchester City Council boundary

**Open Space Typology**

Children's and youth provision - LAP

Children's and youth provision - LEAP

Children's and youth provision - NEAP

Children's and youth provision - other

**Accessibility Buffers**


Children's and youth provision - LAP - 100m buffer

Children's and youth provision - LEAP - 400m buffer

Children's and youth provision - NEAP - 1km buffer

Children's and youth provision - other - 700m buffer

**Note:**  
Based on Open Space data layer provided by Manchester City Council and updated as part of this Assessment.  
PRow data sourced from rowmaps.com.

 Reproduced by permission of Ordnance Survey on behalf of HMSO.  
Contains OS data © Crown Copyright and database right 2024. All rights reserved.  
Contains data from OS Zoomstack. Ordnance Survey AC0000812035.  
Contains public sector information licensed under the Open Government Licence v3.0.



Rev	Description	Drawn	Approved	Date



**THE ENVIRONMENT PARTNERSHIP**

401 Faraday Street, Birchwood Park, Warrington, WA3 6GA  
Tel 01925 844004 e-mail tep@tep.uk.com www.tep.uk.com

Project  
Manchester Open Space Assessment Review

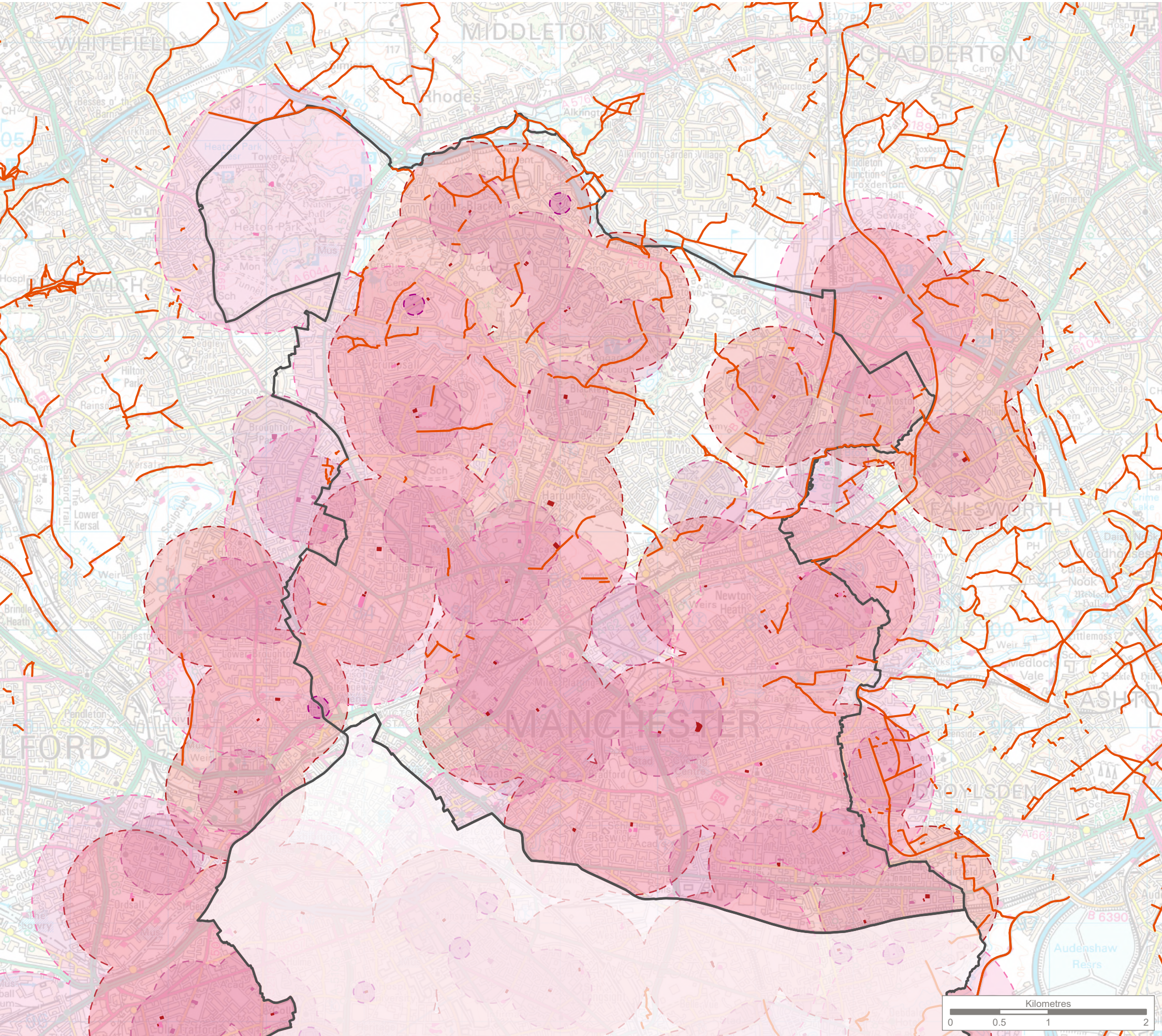
Title  
Open Space Accessibility - Children's and Youth Provision Overview

Drawing Number  
G10280.01.007.1

Page 1 of 5

Drawn	Checked	Approved	Scale	Date
IJ	CW	RM	1:100,000 @ A3	16/07/2024





**KEY**

Manchester City Council boundary

Public Rights of Way (PRoW)

**Open Space Typology**

Children's and youth provision - LAP

Children's and youth provision - LEAP

Children's and youth provision - NEAP

Children's and youth provision - other

**Accessibility Buffers**


Children's and youth provision - LAP - 100m buffer

Children's and youth provision - LEAP - 400m buffer

Children's and youth provision - NEAP - 1km buffer

Children's and youth provision - other - 700m buffer

**Note:**  
Based on Open Space data layer provided by Manchester City Council and updated as part of this Assessment. PRoW data sourced from rowmaps.com.

 Reproduced by permission of Ordnance Survey on behalf of HMSO.  
Contains OS data © Crown Copyright and database right 2024. All rights reserved.  
Contains data from OS Zoomstack. Ordnance Survey AC0000812035.  
Contains public sector information licensed under the Open Government Licence v3.0.



Rev	Description	Drawn	Approved	Date



**THE ENVIRONMENT PARTNERSHIP**

401 Faraday Street, Birchwood Park, Warrington, WA3 6GA  
Tel 01925 844004 e-mail [tep@tep.uk.com](mailto:tep@tep.uk.com) www.[tep.uk.com](http://tep.uk.com)

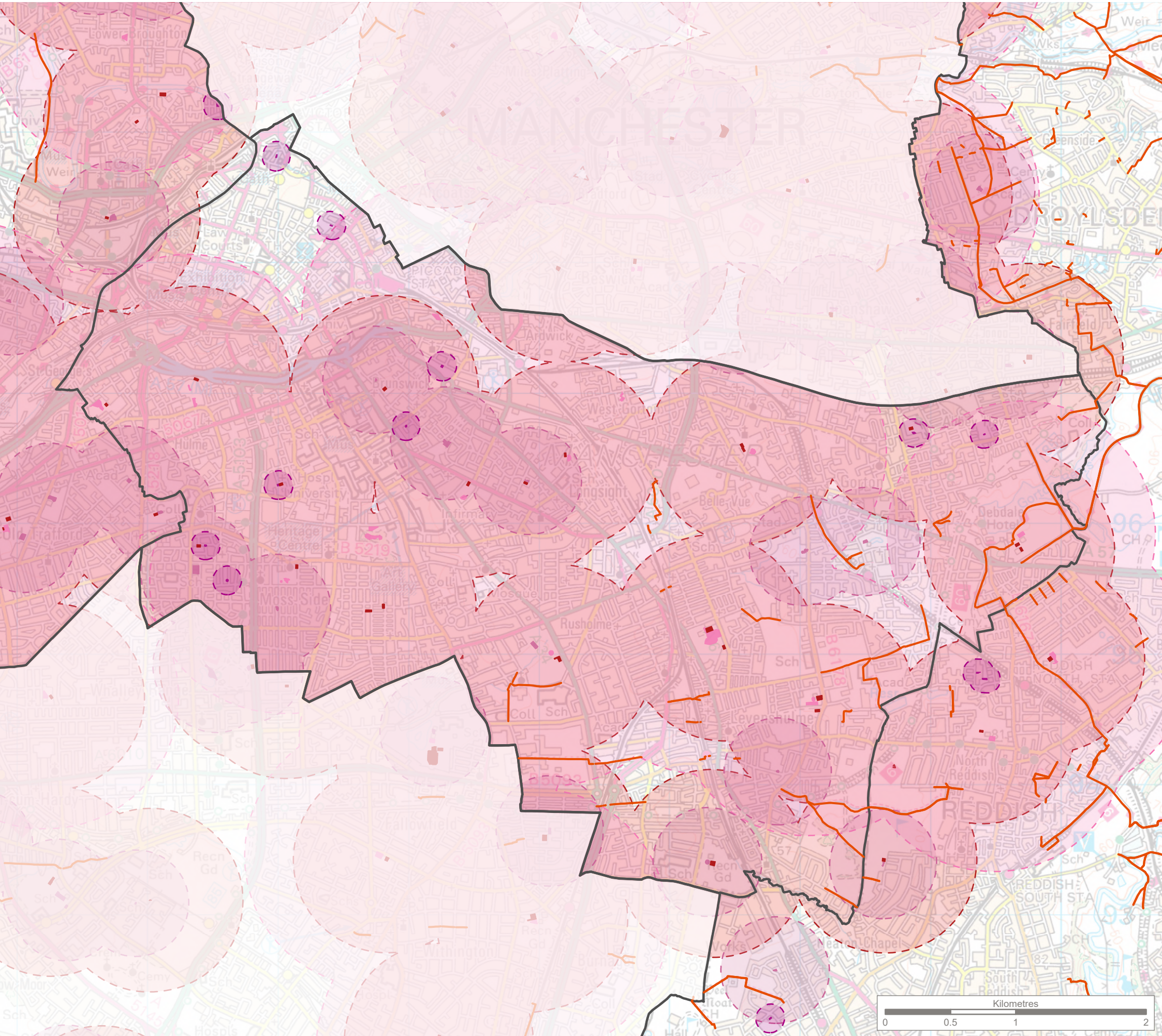
Project  
Manchester Open Space Assessment Review

Title  
Open Space Accessibility - Children's and Youth Provision North

Drawing Number G10280.01.007.2	Page 2 of 5
-----------------------------------	-------------

Drawn	Checked	Approved	Scale	Date
IJ	CW	RM	1:40,000 @ A3	16/07/2024





**KEY**

Manchester City Council boundary

Public Rights of Way (PRoW)

**Open Space Typology**

- Children's and youth provision - LAP
- Children's and youth provision - LEAP
- Children's and youth provision - NEAP
- Children's and youth provision - other

**Accessibility Buffers**

- Children's and youth provision - LAP - 100m buffer
- Children's and youth provision - LEAP - 400m buffer
- Children's and youth provision - NEAP - 1km buffer
- Children's and youth provision - other - 700m buffer

**Note:**  
Based on Open Space data layer provided by Manchester City Council and updated as part of this Assessment.  
PRoW data sourced from rowmaps.com.

Reproduced by permission of Ordnance Survey on behalf of HMSO.  
Contains OS data © Crown Copyright and database right 2024. All rights reserved.  
Contains data from OS Zoomstack. Ordnance Survey AC0000812035.  
Contains public sector information licensed under the Open Government Licence v3.0.



Rev	Description	Drawn	Approved	Date

**TEP** | **THE ENVIRONMENT PARTNERSHIP**

401 Faraday Street, Birchwood Park, Warrington, WA3 6GA  
Tel 01925 844004 e-mail tep@tep.uk.com www.tep.uk.com

Project  
Manchester Open Space Assessment Review

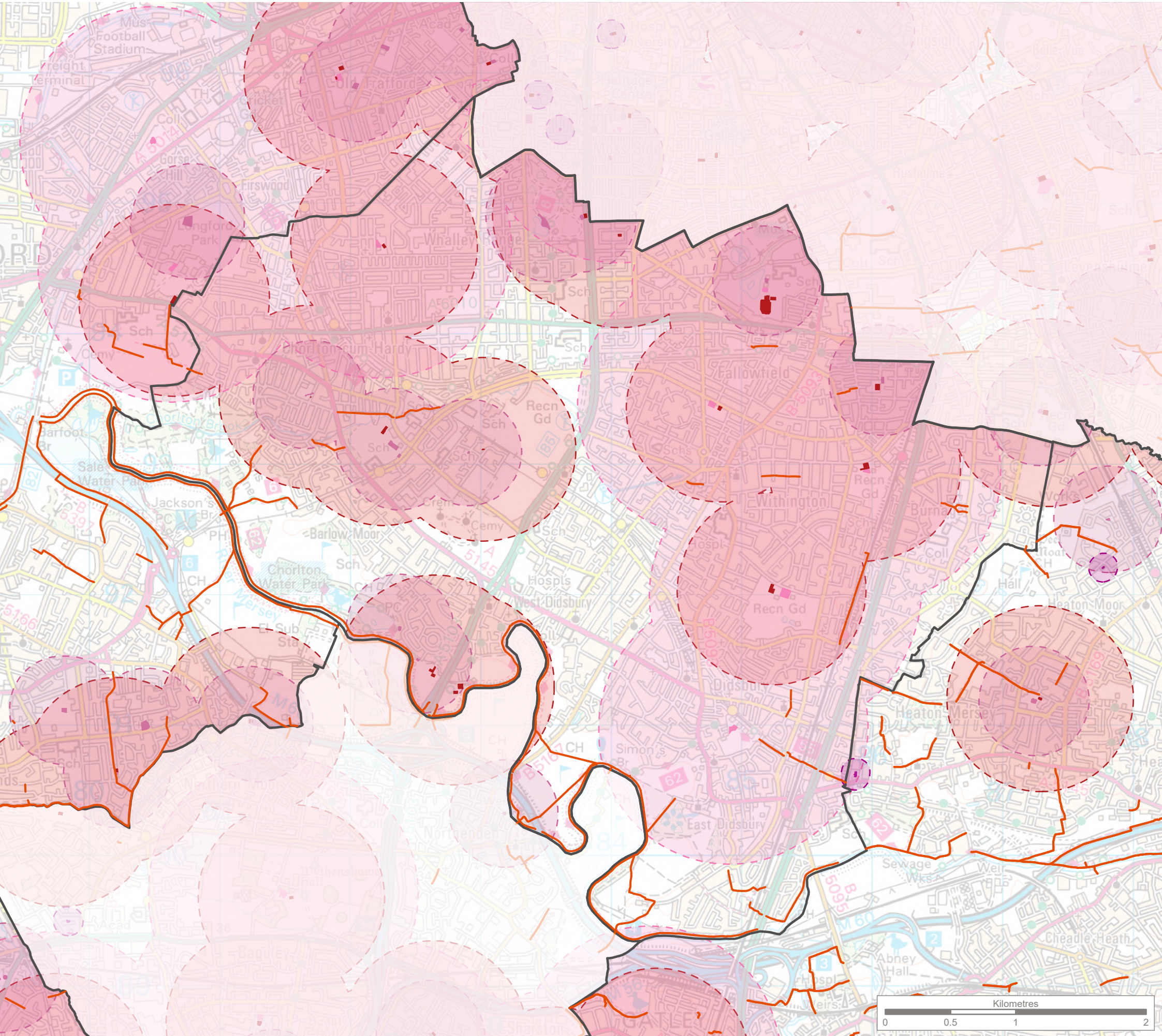
Title  
Open Space Accessibility - Children's and Youth Provision  
Central

Drawing Number  
G10280.01.007.3

Page 3 of 5

Drawn	Checked	Approved	Scale	Date
IJ	CW	RM	1:30,000 @ A3	16/07/2024





**KEY**

Manchester City Council boundary

Public Rights of Way (PRoW)

**Open Space Typology**

Children's and youth provision - LAP

Children's and youth provision - LEAP

Children's and youth provision - NEAP

Children's and youth provision - other

**Accessibility Buffers**


Children's and youth provision - LAP - 100m buffer

Children's and youth provision - LEAP - 400m buffer

Children's and youth provision - NEAP - 1km buffer

Children's and youth provision - other - 700m buffer

**Note:**  
Based on Open Space data layer provided by Manchester City Council and updated as part of this Assessment.  
PRoW data sourced from rowmaps.com.

 Reproduced by permission of Ordnance Survey on behalf of HMSO.  
Contains OS data © Crown Copyright and database right 2024. All rights reserved.  
Contains data from OS Zoomstack. Ordnance Survey AC0000812035.  
Contains public sector information licensed under the Open Government Licence v3.0.



Rev	Description	Drawn	Approved	Date

 **THE ENVIRONMENT PARTNERSHIP**

401 Faraday Street, Birchwood Park, Warrington, WA3 6GA  
Tel 01925 844004 e-mail [tep@tep.uk.com](mailto:tep@tep.uk.com) www.[tep.uk.com](http://www.tep.uk.com)

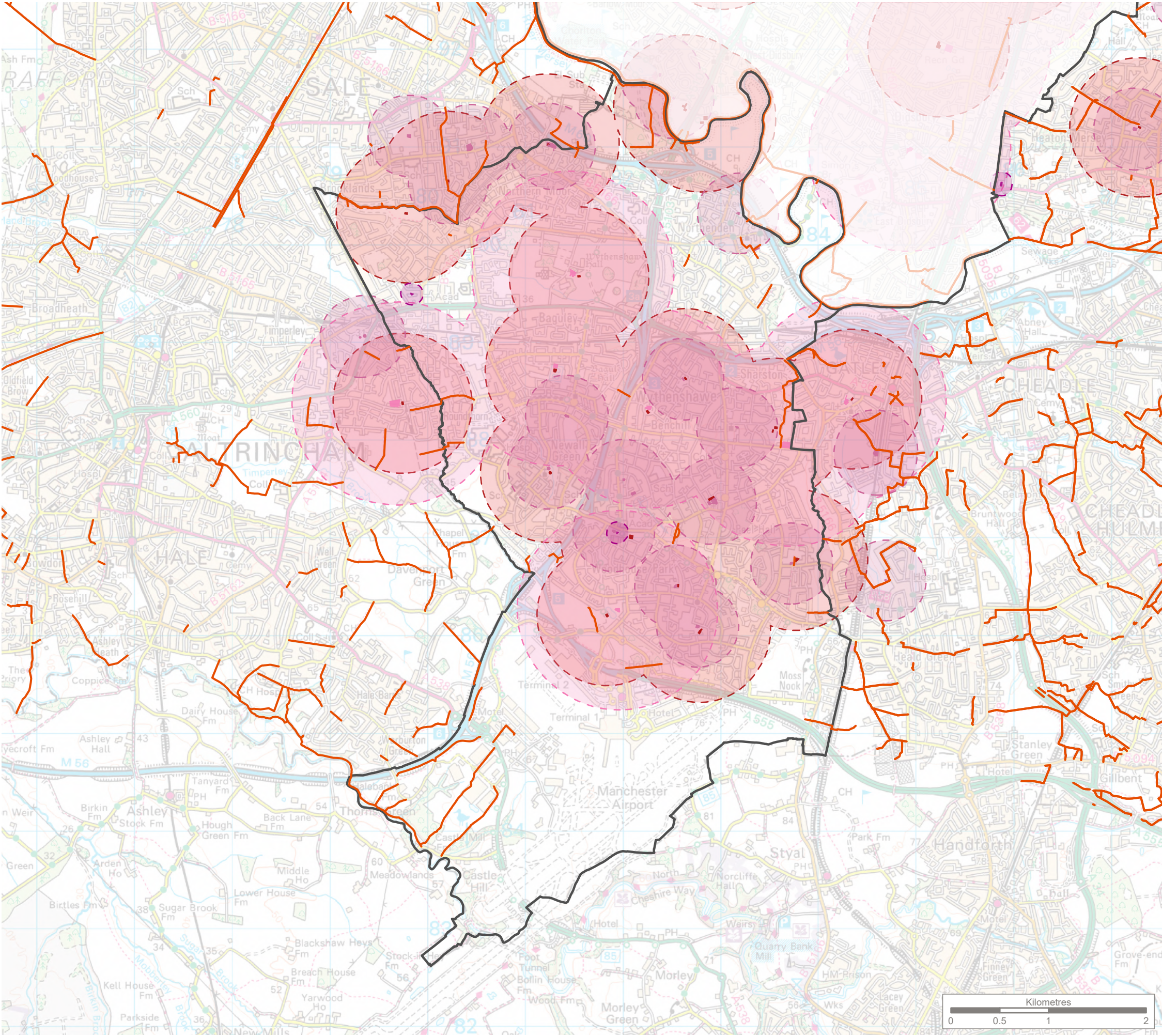
Project  
Manchester Open Space Assessment Review

Title  
Open Space Accessibility - Children's and Youth Provision South

Drawing Number G10280.01.007.4	Page 4 of 5
-----------------------------------	-------------

Drawn	Checked	Approved	Scale	Date
IJ	CW	RM	1:30,000 @ A3	16/07/2024





**KEY**

Manchester City Council boundary

Public Rights of Way (PRoW)

**Open Space Typology**

Children's and youth provision - LAP

Children's and youth provision - LEAP

Children's and youth provision - NEAP

Children's and youth provision - other

**Accessibility Buffers**


Children's and youth provision - LAP - 100m buffer

Children's and youth provision - LEAP - 400m buffer

Children's and youth provision - NEAP - 1km buffer

Children's and youth provision - other - 700m buffer

**Note:**  
Based on Open Space data layer provided by Manchester City Council and updated as part of this Assessment.  
PRoW data sourced from rowmaps.com.

 Reproduced by permission of Ordnance Survey on behalf of HMSO.  
Contains OS data © Crown Copyright and database right 2024. All rights reserved.  
Contains data from OS Zoomstack. Ordnance Survey AC0000812035.  
Contains public sector information licensed under the Open Government Licence v3.0.



Rev	Description	Drawn	Approved	Date

 **THE ENVIRONMENT PARTNERSHIP**

401 Faraday Street, Birchwood Park, Warrington, WA3 6GA  
Tel 01925 844004 e-mail tep@tep.uk.com www.tep.uk.com

Project  
Manchester Open Space Assessment Review

Title  
Open Space Accessibility - Children's and Youth Provision  
Wythenshawe

Drawing Number  
G10280.01.007.5

Page 5 of 5

Drawn	Checked	Approved	Scale	Date
IJ	CW	RM	1:40,000 @ A3	16/07/2024

