

**KEY**

Manchester City Council boundary

**Open Space Quality Banding**

Very good (70% - 89%)

Good (60% - 69%)

Fair (40% - 59%)

Poor (1% - 39%)

No audit

**Note:**  
Based on Open Space data layer provided by Manchester City Council and updated as part of this Assessment.

Reproduced by permission of Ordnance Survey on behalf of HMSO.  
Contains OS data © Crown Copyright and database right 2025. All rights reserved.  
Contains data from OS Zoomstack. Ordnance Survey AC0000812035.



A	Updated open space data	IJ	RM	25/04/2025
Rev	Description	Drawn	Approved	Date

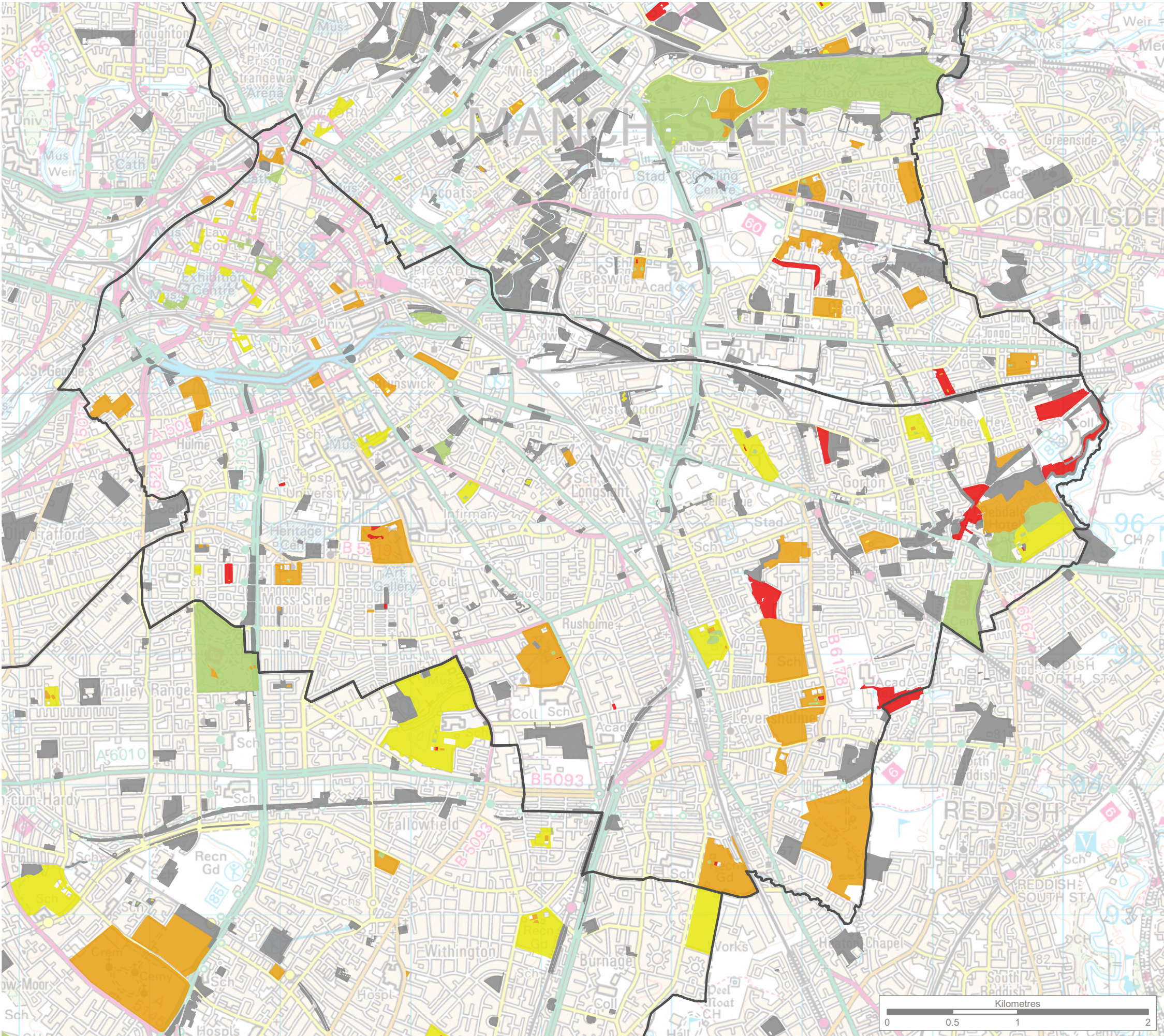
**THE ENVIRONMENT PARTNERSHIP**

401 Faraday Street, Birchwood Park, Warrington, WA3 6GA  
Tel 01925 844004 e-mail [tep@tep.uk.com](mailto:tep@tep.uk.com) www.[tep.uk.com](http://www.tep.uk.com)

Project  
Manchester Open Space Assessment Review

Title Open Space Quality Assessment North				
Drawing Number G10280.01.002A.2				Page 2 of 5
Drawn IJ	Checked CW	Approved RM	Scale 1:40,000 @ A3	Date 25/04/2025





**KEY**

Manchester City Council boundary

**Open Space Quality Banding**

Very good (70% - 89%)


Good (60% - 69%)

Fair (40% - 59%)

Poor (1% - 39%)

No audit

**Note:**  
Based on Open Space data layer provided by Manchester City Council and updated as part of this Assessment.



Reproduced by permission of Ordnance Survey on behalf of HMSO.  
Contains OS data © Crown Copyright and database right 2025. All rights reserved.  
Contains data from OS Zoomstack. Ordnance Survey AC0000812035.



A	Updated open space data	IJ	RM	25/04/2025
Rev	Description	Drawn	Approved	Date



**THE ENVIRONMENT PARTNERSHIP**

401 Faraday Street, Birchwood Park, Warrington, WA3 6GA  
Tel 01925 844004 e-mail tep@tep.uk.com www.tep.uk.com

Project  
Manchester Open Space Assessment Review

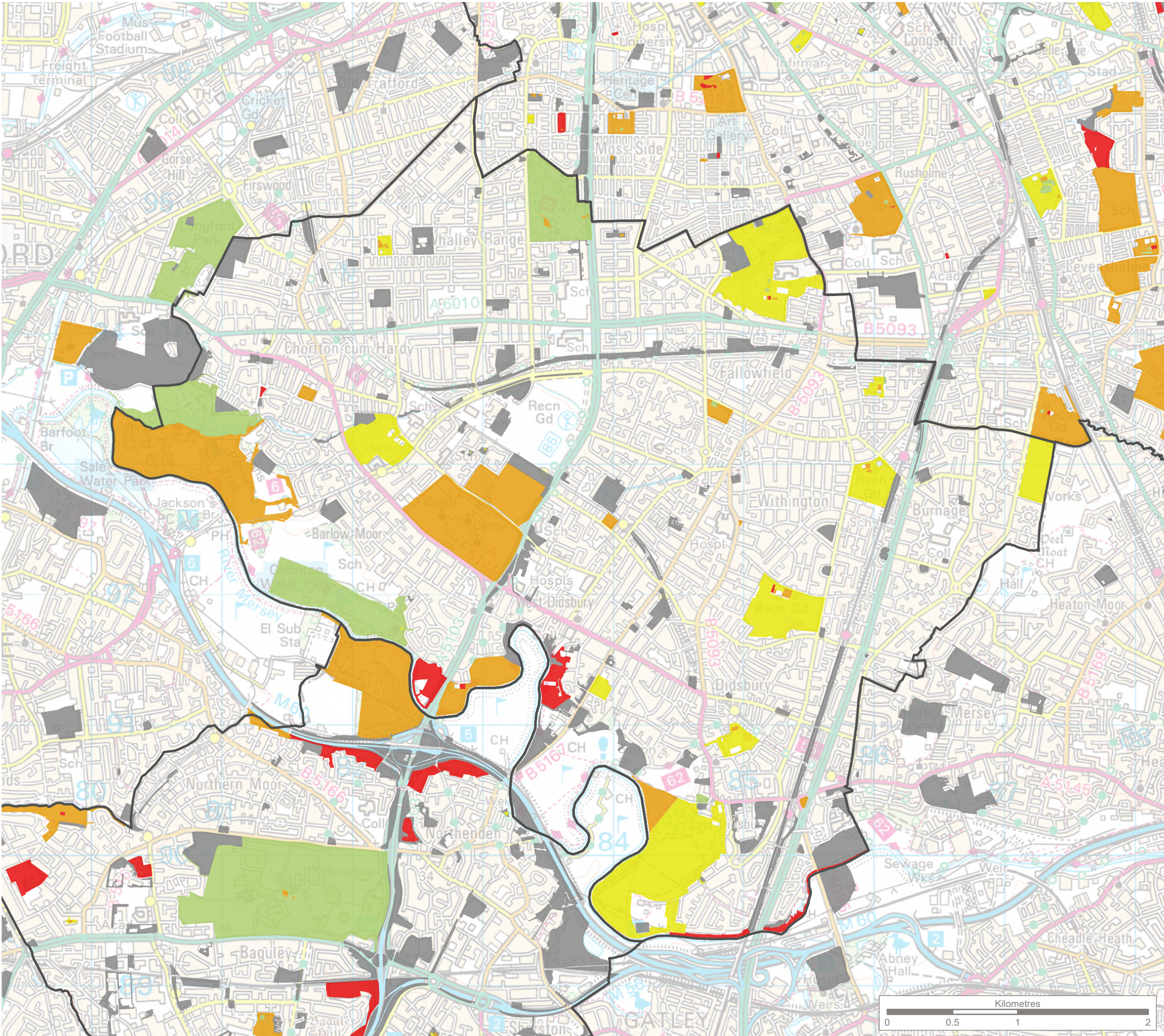
Title  
Open Space Quality Assessment  
Central

Drawing Number  
G10280.01.002A.3

Page 3 of 5

Drawn	Checked	Approved	Scale	Date
IJ	CW	RM	1:30,000 @ A3	25/04/2025





**KEY**

Manchester City Council boundary

**Open Space Quality Banding**

Very good (70% - 89%)

Good (60% - 69%)

Fair (40% - 59%)

Poor (1% - 39%)

No audit

**Note:**  
Based on Open Space data layer provided by Manchester City Council and updated as part of this Assessment.

Reproduced by permission of Ordnance Survey on behalf of HMSO.  
Contains OS data © Crown Copyright and database right 2025. All rights reserved.  
Contains data from OS Zoomstack. Ordnance Survey AC0000812035.



A	Updated open space data	IJ	RM	25/04/2025
Rev	Description	Drawn	Approved	Date

**THE ENVIRONMENT PARTNERSHIP**

401 Faraday Street, Birchwood Park, Warrington, WA3 6GA  
Tel 01925 844004 e-mail [tep@tep.uk.com](mailto:tep@tep.uk.com) www.[tep.uk.com](http://tep.uk.com)

Project  
**Manchester Open Space Assessment Review**

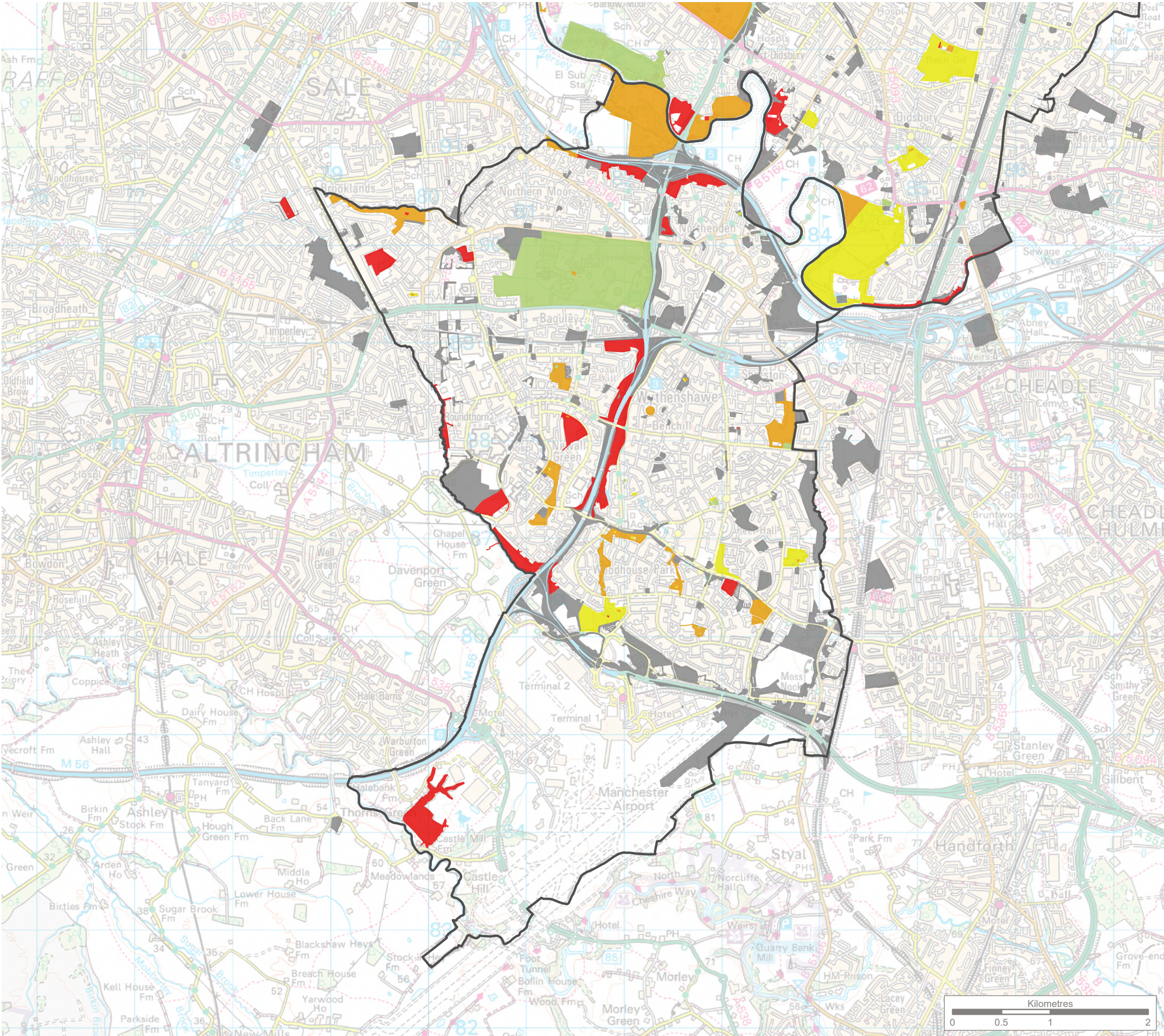
Title  
**Open Space Quality Assessment South**

Drawing Number  
**G10280.01.002A.4**

Page 4 of 5

Drawn	Checked	Approved	Scale	Date
IJ	CW	RM	1:30,000 @ A3	25/04/2025





**KEY**

Manchester City Council boundary

**Open Space Quality Banding**

Very good (70% - 89%)

Good (60% - 69%)

Fair (40% - 59%)

Poor (1% - 39%)

No audit

**Note:**  
Based on Open Space data layer provided by Manchester City Council and updated as part of this Assessment.

Reproduced by permission of Ordnance Survey on behalf of HMSO.  
Contains OS data © Crown Copyright and database right 2025. All rights reserved.  
Contains data from OS Zoomstack. Ordnance Survey AC0000812035.



A	Updated open space data	IJ	RM	25/04/2025
Rev	Description	Drawn	Approved	Date

**THE ENVIRONMENT PARTNERSHIP**

401 Faraday Street, Birchwood Park, Warrington, WA3 6GA  
Tel 01925 844004 e-mail tep@tep.uk.com www.tep.uk.com

Project  
Manchester Open Space Assessment Review

Title  
Open Space Quality Assessment  
Wythenshawe

Drawing Number  
G10280.01.002A.5

Page 5 of 5

Drawn	Checked	Approved	Scale	Date
IJ	CW	RM	1:40,000 @ A3	25/04/2025